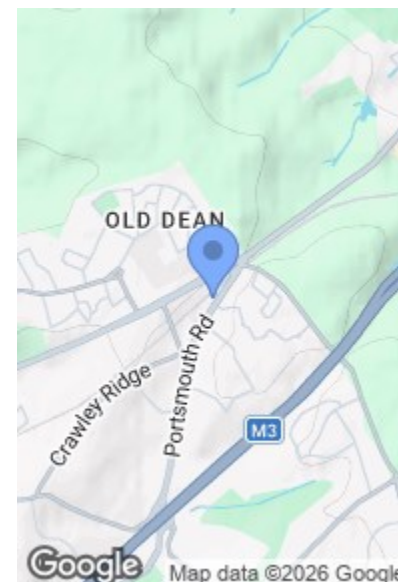
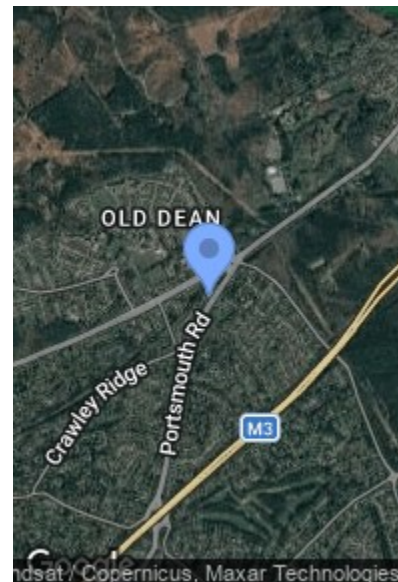
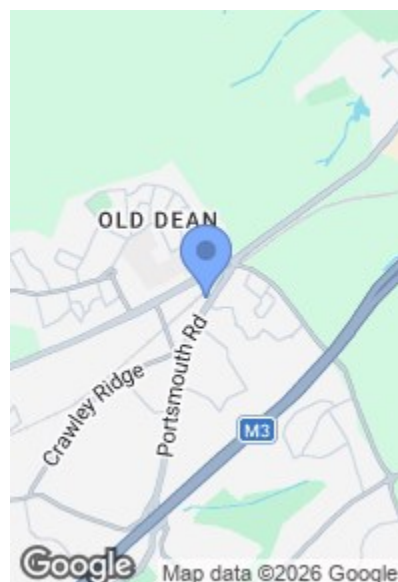


6 PORTSMOUTH ROAD, CAMBERLEY GU15
OFFERS IN EXCESS OF £250,000

ROAD MAP

HYBRID MAP

TERRAIN MAP



Camberley 01276 539111
Email: enquiries@knightsproperty.com
54 Obelisk Way, Camberley, Surrey GU15 3SG
www.knightsproperty.com



Energy Efficiency Rating		Current	Potential
Very energy efficient - lower running costs			
A	92-100		
B	81-91		
C	69-80		
D	55-68		
E	39-54		
F	21-38		
G	1-20		
Not energy efficient - higher running costs			
England & Wales		47	75
		EU Directive 2002/91/EC	

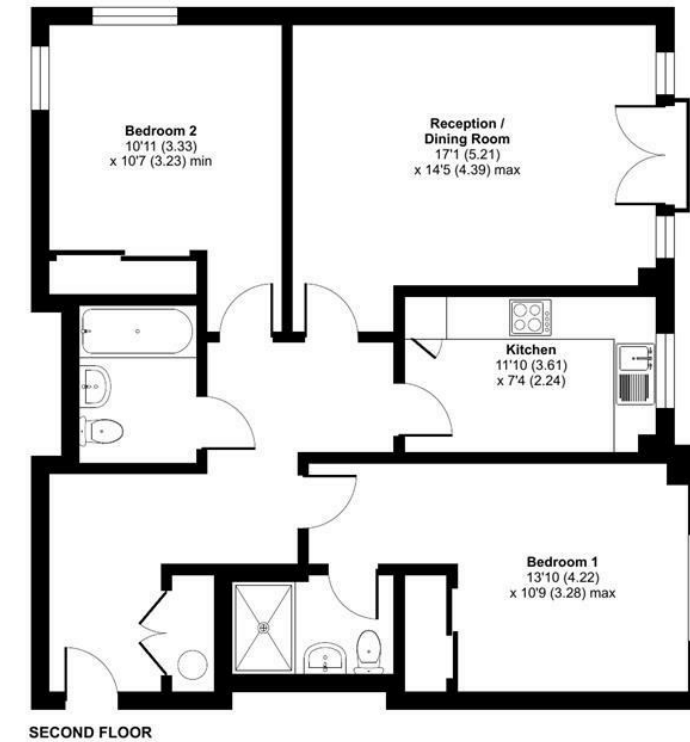




FLOORPLAN

Portsmouth Road, Camberley, GU15

Approximate Area = 890 sq ft / 82.6 sq m
For identification only - Not to scale



MAIN FEATURES

- Top Floor Apartment
- Two Double Bedrooms
- One Allocated Parking Space
- Modern Kitchen
- Very Well Maintained Communal Grounds

- Very Well Presented
- Juliet Balcony
- En Suite & Bathroom
- Good Commuter Links

FULL DETAILS

Entrance Hallway

Enter via door, telecom entrance system, storage cupboard and carpet flooring.

Reception/Dining Room

Front aspect, carpet flooring and doors leading to the juliet balcony.

Kitchen

Front aspect, range of base and eye level units, quartz work surfaces, sink, fridge/freezer, dishwasher, four ring electric hob, extractor fan, oven, microwave, washer/dryer and tiled flooring.

Bedroom One

Front aspect double bedroom, wardrobe with mirrored sliding doors and carpet flooring. Door leading through to the;

En Suite

Shower cubicle, low level WC, wash hand basin, vanity mirror, electric heated towel rail, partly tiled walls and tiled flooring.

Bedroom Two

Dual aspect double bedroom, wardrobe with mirrored sliding doors and carpet flooring.

Bathroom

Wash hand basin, low level WC, bath with shower attachment, electric heated towel rail, vanity mirror, partly tiled walls and tiled flooring.

Council Tax

Band D.

Lease Information

We have been advised by the owner that there is approximately 105 years remaining on the lease. The current service charge and ground rent combined is approximately £353 per month. Knights Property Services can not be held liable for any inaccuracy as we are relying on third party information.

Floor plan produced in accordance with RICS Property Measurement Standards incorporating International Property Measurement Standards (IPMS2 Residential). © ricscom 2024. Produced for Knights Property Services. REF: 1082234

6 PORTSMOUTH ROAD, CAMBERLEY GU15

KNIGHTS PROPERTY SERVICES - Situated along Portsmouth Road, Camberley, is this luxurious top floor apartment in Pennethorne, which offers a perfect blend of comfort and convenience. Ideally located near Frimley Park Hospital, Bagshot village and Camberley town centre, this property is close to a wide range of shops, amenities and leisure facilities.

Upon entering there is a reception/dining room with a juliet balcony, a well-equipped separate kitchen, two generously sized double bedrooms, both with mirrored wardrobes, an en suite to the principle bedroom and a further bathroom.

The very well presented property has been recently decorated, ensuring a fresh and modern feel throughout. The apartment comes with one allocated parking space. Residents can enjoy the very well maintained communal grounds and there are visitor parking bays available.