



Oaklands Estate, SW4

£2,000 Per calendar month

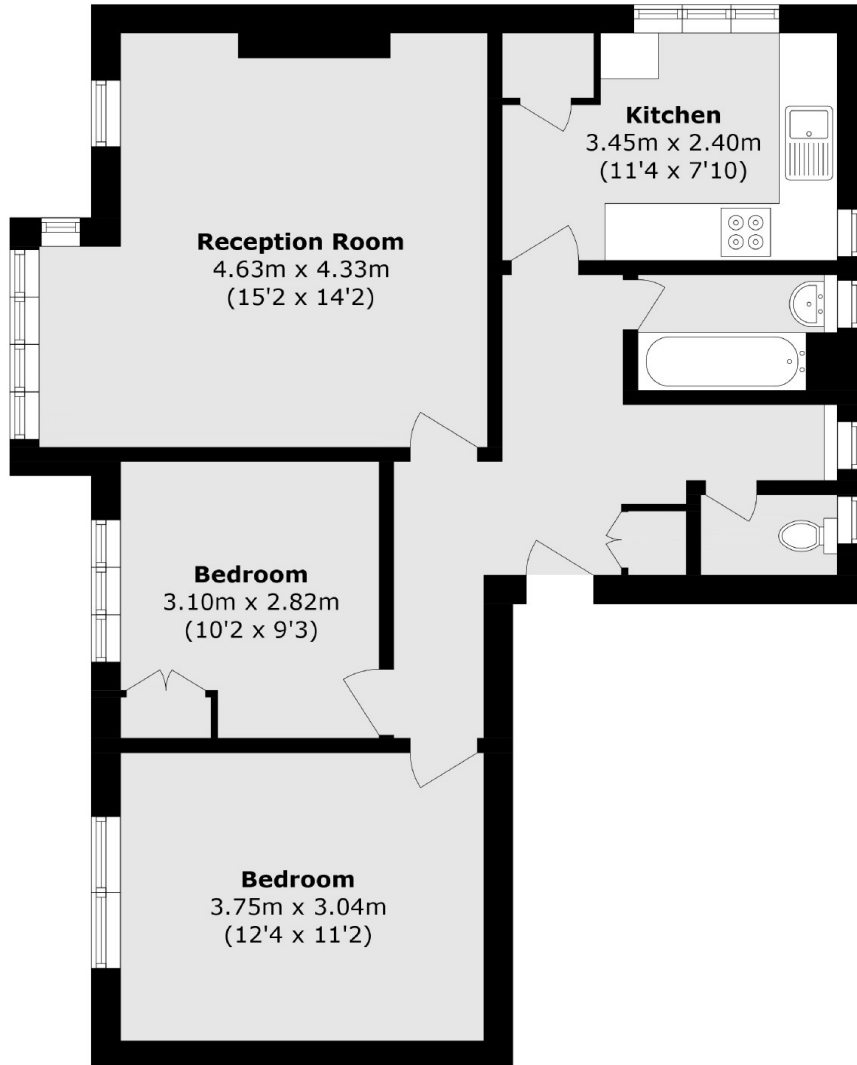
A conveniently located two bedroom property in a purpose-built residential block in Clapham South. The property comprises of a spacious reception room, separate kitchen, bathroom and separate WC.

Moments from Clapham South underground station, this property is ideal for professional sharers looking to be close to both local amenities and transport links into the City.

Features

- Two Double Bedrooms
- First Floor Flat
- Spacious Reception Room
- Separate Kitchen
- Bathroom And WC
- Close To Tube

Oaklands Estate, London, SW4



Total area (approx.): 62.5 sq. m (672.7 sq. ft)