



Corbet Gardens, W3

£620,000

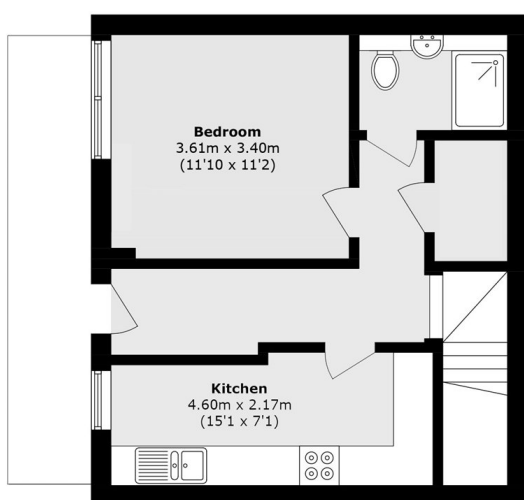
A beautifully presented split-level two-bedroom, three-bathroom maisonette situated on the borders of Chiswick. This immaculate property offers over 1,060 sq ft of living accommodation and benefits from its own private entrance, two private terraces overlooking the park, secure bike storage, and allocated gated parking.

Under a quarter of a mile from South Acton station (Overground) and under half a mile from Acton Town tube station (District and Piccadilly lines).

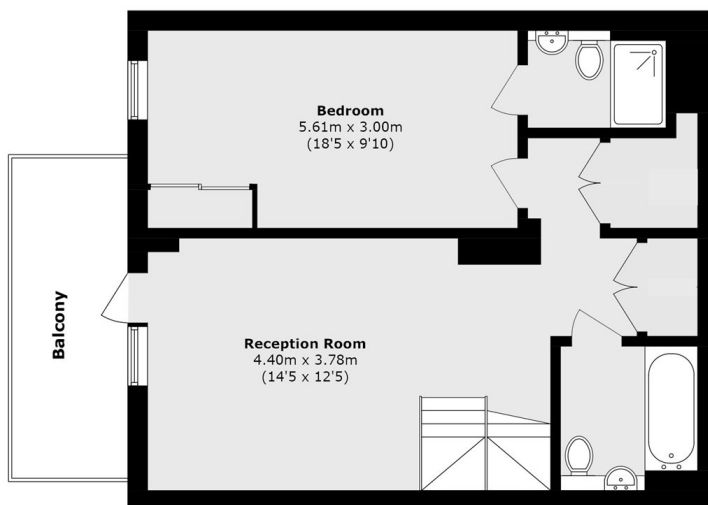
Features

Maisonette
Two Double Bedrooms.
Three Bathrooms
Underground Parking Space
Over 1,050 sq.ft
Private Rear Patio

Corbet Gardens, London, W3



Ground Floor



First Floor

Total area (approx.): 99.3 sq. m (1068.9 sq. ft)

Balcony area (approx.): 8.5 sq. m (91.5 sq. ft)