



3802

PAN PENINSULA EAST

LONDON, E14

3802

PAN PENINSULA EAST

Enjoy elevated city living in this spectacular duplex penthouse, where double-height ceilings create a bright, statement setting for everyday life and entertaining. Sleek contemporary interiors are complemented by polished marble flooring, a striking glass staircase, and a streamlined open-plan kitchen with generous storage and integrated appliances. Two calm, well-proportioned bedrooms include luxurious spa-style marble en suites. Residents also benefit from first-class on-site amenities, including an indoor pool, spa, gym, cinema room and elegant resident lounges, all within a secure, concierge-style environment.



3802

PAN PENINSULA EAST PAN PENINSULA SQUARE, LONDON

An impressive 1,561 sq ft duplex penthouse in Pan Peninsula East Tower, arranged over two bright levels. The lower floor features a spacious open-plan kitchen and dining area with a central island and a generous reception, opening to a south-east facing balcony. A stylish staircase leads to the upper floor, hosting two double bedrooms, both with en suites, plus a further reception and a balcony. Contemporary finishes and superb city vistas complete this standout home.



2 BEDS



2 RECEPTIONS



2 BATHS



EPC: C (79)



1,561 SQFT



C.TAX: H (£3,509 pa)

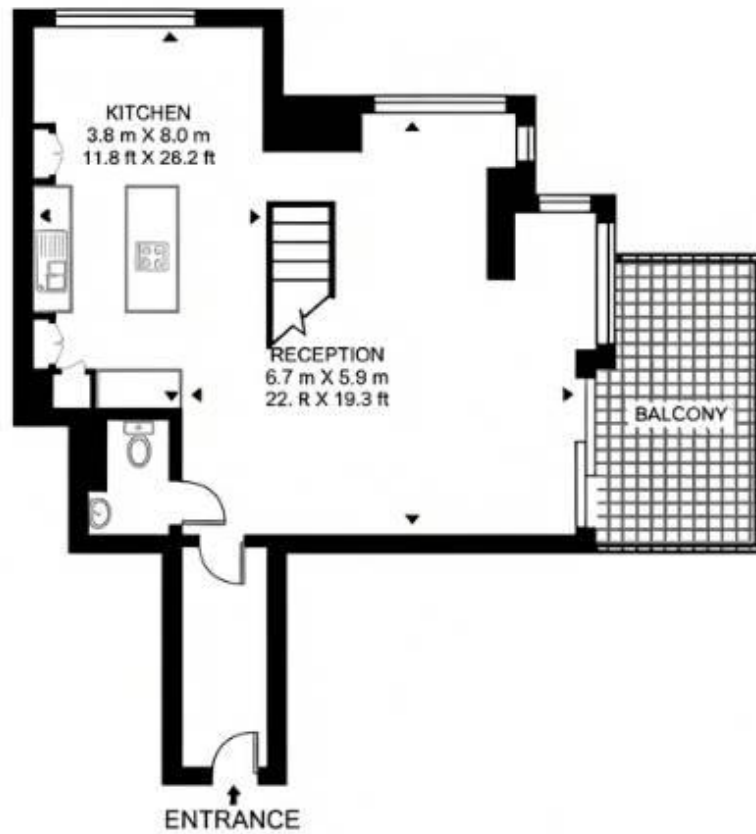
RENTAL PRICE

£4,940 pcm
£1,140 pw

FLOORPLAN

PAN PENINSULA EAST TOWER

APPROXIMATE GROSS INTERNAL FLOOR AREA 1561 SQ. FT (145.0 SQ. M)



THIRTY EIGHTH FLOOR



THIRTY NINTH FLOOR

FLOORPLAN: GROUND FLOOR



FLOORPLAN: FIRST FLOOR







LIVING ROOM

Set within a bright two-storey duplex, the living room features soaring ceilings and expansive windows that offer panoramic city views. A glass balustrade staircase and polished marble floors create a sleek, contemporary backdrop. A grand piano and plush seating provide a refined, welcoming ambiance for entertaining. The open-plan layout and abundant natural light make the space feel airy and luxurious.

SPECIFICATIONS

- Two-storey duplex with internal staircase.
- Panoramic city views from full-height windows.
- Polished marble floors throughout the living area.
- Glass balustrade staircase adds dramatic focal point.
- Elegant piano enhances the refined, entertaining space.
- Bright, open-plan design with natural light.



KITCHEN

Bright, open-plan living area with a seamless food-prep and dining zone. White high-gloss cabinetry pairs with stainless-steel appliances and a sleek work surface. Large windows flood the space with natural light, highlighting contemporary finishes. The layout supports effortless entertaining with abundant storage and streamlined design.

SPECIFICATIONS

- Open-plan layout enhances living and dining flow.
- White high-gloss cabinets for modern style.
- Integrated appliances ensure a sleek, cohesive look.
- Durable, easy-clean work surfaces throughout.
- Abundant storage with clean, minimal finish.
- Furnished to a modern, high-spec standard





MASTER BEDROOM

Luxurious master bedroom featuring a plush tan upholstered headboard. Expansive windows fill the room with natural light and showcase sweeping city views. Full-height built-in wardrobes with sliding doors and a large central mirror provide generous storage and enhance the sense of space.

SPECIFICATIONS

- Large bed with plush headboard
- Floor-to-ceiling windows with city skyline views
- Built-in wardrobes with full height sliding doors
- Hotel style marble ensuite bathroom with bath
- Neutral, calming decor with soft carpeted floors
- Blackout curtains for privacy and sleep





ENSUITE BATHROOMS

Luxurious ensuite bathrooms for both bedrooms, each featuring dark marble walls and a contemporary white suite. The master bedroom ensuite offers a white bath with a marble surround and a separate glass-enclosed shower, while the second bedroom ensuite features a sleek glass-enclosed shower unit. Wall-mounted toilets and sleek vanities with integrated sinks maximise space, while recessed ceiling lights create a bright, modern ambience throughout.

SPECIFICATIONS

- Dark marble walls create a luxurious backdrop.
- Glass shower enclosure with chrome fittings.
- Bath with marble surround adds spa-like elegance.
- Wall-mounted toilet saves space and enhances layout.
- Sleek vanity with integrated sink and mirror storage.
- Recessed lighting creates a bright, modern ambience.



SECOND BEDROOM

Bright, contemporary second bedroom featuring a large bed with a padded headboard. The room is flooded with natural light from expansive windows, offering city views. Built-in mirrored wardrobes reflect space and provide ample storage, keeping the room uncluttered. A neutral palette and clean lines create a calm, hotel-style ambience that suits both relaxation and work.



SPECIFICATIONS

- Bright, spacious double bedroom with city views
- Large built-in mirrored wardrobes maximise storage
- Neutral palette enhances sense of space and calm
- Hotel style marble ensuite bathroom
- Contemporary headboard and clean lines create modern aesthetic



FACILITIES

Luxurious building facilities offer resort-style living for residents. The indoor pool features blue ambient lighting alongside a modern gym, spa and wellness spaces. A tiered cinema, lounges, and a sophisticated lobby create ample social and relaxation options. Secure access ensures a refined, connected living environment throughout the building.

SPECIFICATIONS

- Indoor heated pool and spa facilities with blue lighting
- Modern gym with cardio and strength equipment
- Luxury cinema room with tiered seating
- Sophisticated lounge and dining areas for residents
- Stylish lobby and reception with secure access



ABOUT NH PROPERTIES

At NH Properties, we understand the importance of finding a home that matches your lifestyle and expectations. With extensive experience in the **North West London** and **Canary Wharf** markets, We specialise in curating exceptional properties for discerning tenants. Our team is dedicated to delivering a seamless, **high-quality experience**, ensuring every detail is managed with care and professionalism. We are committed to excellence and our expertise ensures properties are presented to the highest standard, attracting premium tenants and optimising income for clients.

NICHOLAS HART

FOUNDER

- 📞 0203 602 2525
- ✉ info@nh-properties.co.uk
- 🌐 nh-properties.co.uk
- 📍 Hillview House, 1 Hallswelle
Parade, London NW11 0DL

CALL US TODAY!



PROPERTIES



NICHOLAS HART

NH PROPERTIES

0203 602 2525

info@nh-properties.co.uk

nh-properties.co.uk

