



FLAT 1 ALBRIGHT COURT,
PORTISHEAD, BS20 7QE

GOODMAN
& LILLEY



A WELL-APPOINTED AND CONTEMPORARY TWO-BEDROOM APARTMENT, OFFERING STYLISH OPEN-PLAN LIVING AND A THOUGHTFULLY DESIGNED LAYOUT, PERFECTLY SUITED TO MODERN LIFESTYLES.

Upon entering the apartment, you are welcomed into a secure entrance hall, complete with an airing cupboard housing the hot water tank and additional shelving, along with quality laminate flooring, an entry phone system and access to all principal rooms.

The principal bedroom is positioned to the left and benefits from a uPVC double glazed window to the side, a fitted wardrobe with full-height mirrored sliding doors, along with TV and telephone points and recessed ceiling spotlights.

Continuing through, the kitchen is fitted with a contemporary range of white high-gloss wall and base units with ample worktop space. Integrated appliances include a fridge, freezer, dishwasher and washing machine, alongside an electric fan-assisted oven and four-ring electric hob with extractor hood over. A stainless steel sink unit with mixer tap is set beneath uPVC double glazed windows to the side and rear, with tiled splashbacks and recessed ceiling spotlights completing the space. The kitchen opens seamlessly into the living/dining area, creating a sociable open-plan layout.

The living/dining area is a bright and well-proportioned space, featuring a uPVC double glazed window and French doors with full-height glazed panels to either side, opening onto a private terrace—perfect for indoor-outdoor living. The room is finished with quality laminate flooring, recessed ceiling spotlights, and TV and telephone points.

Accessed from the kitchen area, the second bedroom offers a versatile space with a uPVC double glazed window to the side and recessed ceiling spotlights, ideal as a guest room, home office or nursery.

Completing the accommodation is a modern bathroom, accessed from the entrance hall, fitted with a three-piece white suite comprising a panelled bath with shower over and glass screen, pedestal wash hand basin and low-level WC. Additional features include tiled splashbacks, a heated towel rail, extractor fan, obscure uPVC double glazed window and recessed ceiling spotlights.

Terrace

The property benefits from a south-facing terrace, accessed via secure uPVC double glazed French doors from the open-plan living/dining/kitchen area, seamlessly blending indoor and outdoor living. The terrace is paved and enclosed by a glazed balustrade, affording attractive views over the Marina boatyard.

Parking Spcae

Located to the rear of the property is a parking space for one vehicle.

Location

Situated within the ever-popular Village Quarter in Portishead, the property is ideally positioned within close proximity to a wide range of local amenities, including the vibrant Marina and High Street, offering an excellent selection of cafés, restaurants, bars and leisure facilities.

Agent Notes

M5 (J19) 3 miles, M4 (J20) 11 miles, Bristol Parkway 14 miles, Bristol Temple Meads 10.5 miles, Bristol Airport 12 miles (distances approximate)

Tenure: Leasehold with management charges of £1300.00 PA with remainder of 992 years on the lease.

Local Authority: North Somerset Council Tel: 01934 888888

Council Tax Band: B

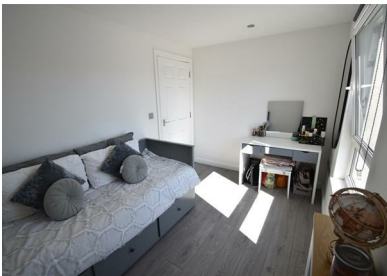
Services: Electric, Mains Water & Drainage

Viewings strictly by appointment with the agent Goodman & Lilley 01275 430440

- First Floor Apartment
- Open Plan Living
- Approx. 1056 Sq.Ft
- Allocated Parking Space
- Two Bedrooms
- 18' x 17' Terrace
- Well Presented Throughout
- Popular Village Quarter Location



GUIDE PRICE £289,950



Ground Floor

Approx. 68.9 sq. metres (741.8 sq. feet)
(excluding Balcony/Terrace)



Total area: approx. 68.9 sq. metres (741.8 sq. feet)

HENLEAZE - 0117 2130777
henleaze@goodmanlilley.co.uk

PORTISHEAD - 01275 430440
sales@goodmanlilley.co.uk

SHIREHAMPTON - 0117 2130333
shire@goodmanlilley.co.uk

Zoopla.co.uk

rightmove



WWW.GOODMANLILLEY.CO.UK

These particulars are for general guidance only. They do not form or constitute any part of an offer or contract. Goodman & Lilley has not carried out structural surveys of the property. The services, appliances or specific fittings mentioned in these details have not been tested. Every attempt is made to ensure accuracy, however all photographs, measurements, floor plans and distances are for illustrative purposes only. They must not be relied upon when purchasing carpets and or other fixtures & fittings. Lease details, service charges and ground rents are given as a guide only. They should be checked and confirmed by a licensed solicitor prior to exchange of contracts. The copyright of all details, photographs and floor plans remain exclusive to Goodman & Lilley.