

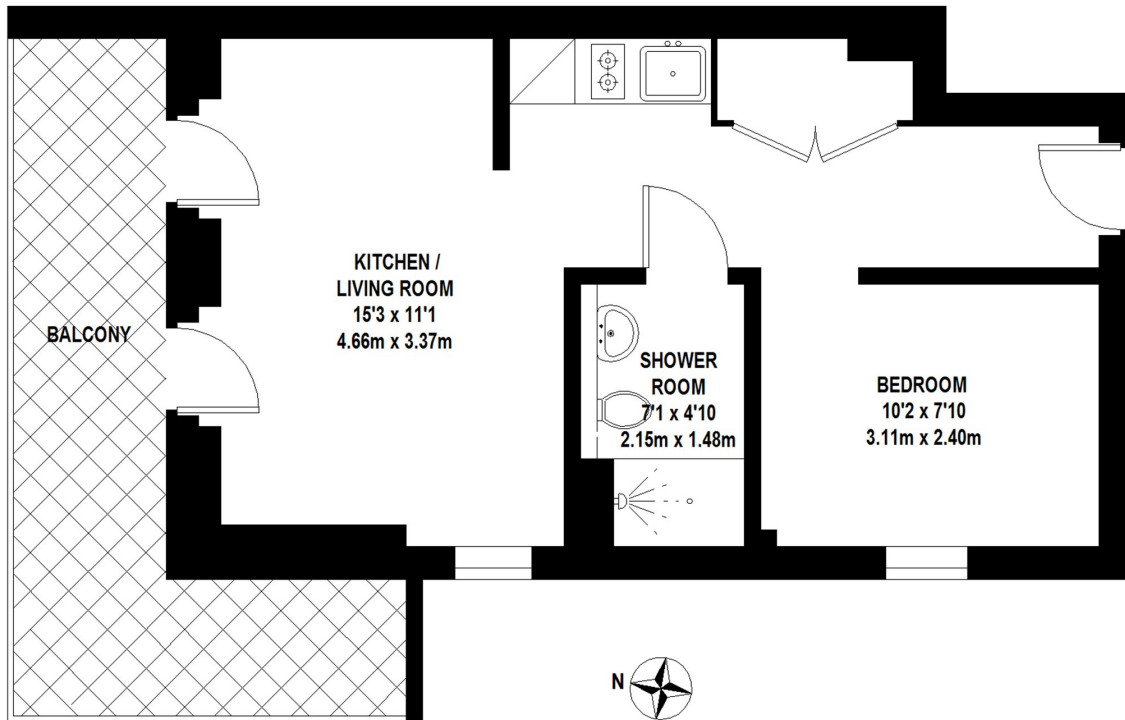


## INDESCON SQUARE, E14

**£300,000**

Spacious studio with a wrap around balcony and views of the communal grounds in Indecon Square E14. This dual aspect apartment comprises of an open-plan kitchen living room and sleeping area. The bathroom includes a walk-in shower, WC, basin and mirror/shaver socket. The development benefits from 24hr concierge and video intercom system.

- Spacious studio
- 24hr concierge
- Wrap around balcony
- Service charge £3,400 p/a
- Ground rent £300 p/a
- Lease 978 years



**TOTAL APPROX. FLOOR AREA 404 SQ.FT. (37.51 SQ.M)**

Whilst every attempt has been made to ensure the accuracy of the floor plan contained here, measurements of door, windows, rooms and any other items are approximate and no responsibility is taken for any error, omission, or mis-statement. This plan is for illustrative purposes only and should be used as such by any prospective purchaser. The services, systems and appliances shown have not been tested and no guarantee as to their operability or efficiency can be given

© 2022 (ID840898)

**LiFE RESIDENTIAL**

36 Millharbour, London, E14

9JS

Sales: 020 3668 1033

Lettings: 020 3668 1030

Energy Rating: . We aim to make our particulars both accurate and reliable. However they are not guaranteed; nor do they form part of an offer or contract. If you require clarification on any points then please contact us, especially if you're traveling some distance to view. Please note that appliances and heating systems have not been tested and therefore no warranties can be given as to their good working order.