



Admiralty Avenue, E16

£290,000

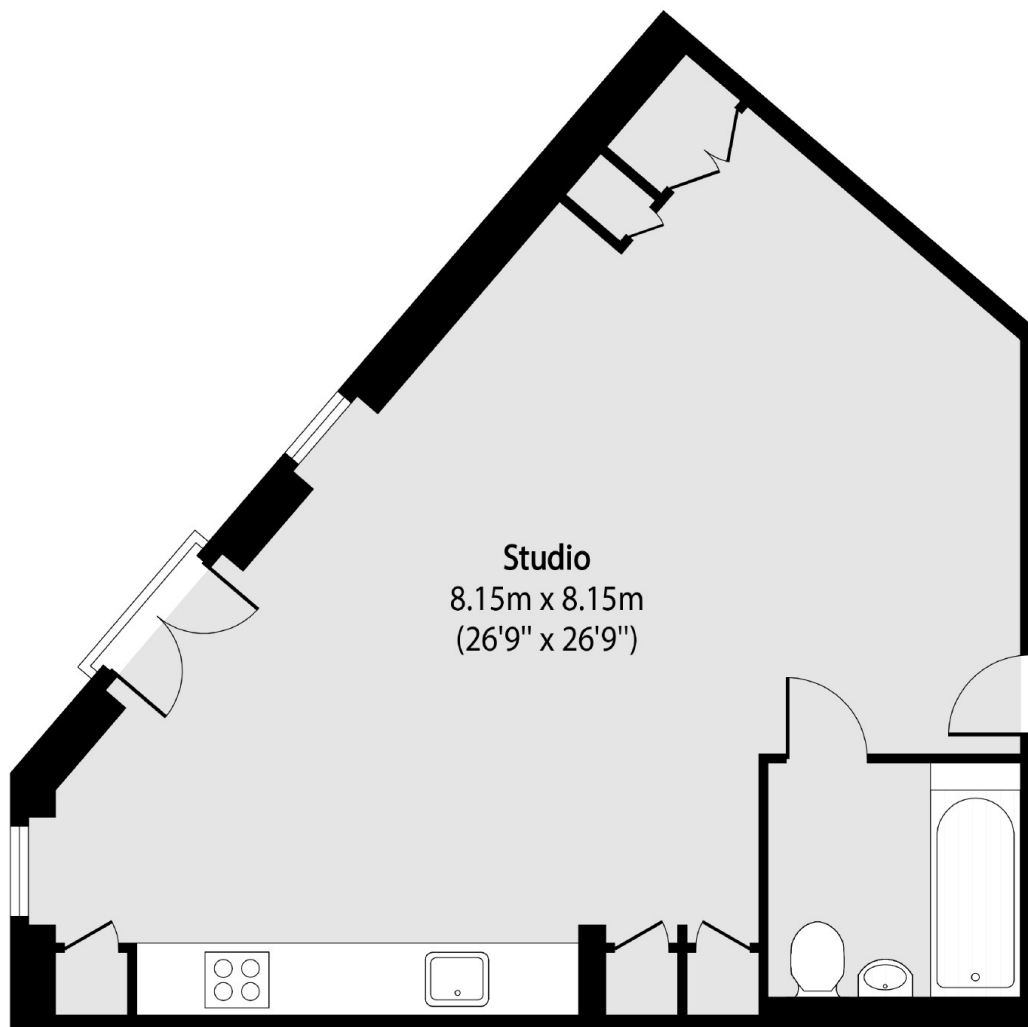
Welcome to this beautifully designed studio apartment, located in a luxurious and sought-after development, Royal Wharf. Additional features to include a long lease, 24 hour concierge, and resident facilities.

Royal Wharf is just 0.3 miles from Pontoon Dock DLR station, offering great links into the City and Canary Wharf. In addition, London City Airport is just 1.1 mile away.

Features

- 900 Plus Year Lease
- 24 Hour Concierge
- Resident Facilities
- Great Location
- 503 Square Feet
- Modern Development

Admiralty Avenue, London, E16



Total area (approx): 46.73 sq m (503 sq. ft)