

77 Goldhawk Road, Shepherd's Bush, London W12 8EH

Kerr & Co



Devonport Road, London W12

An exceptional double fronted, Victorian link-attached villa built in 1851, providing approximately 2,590 sq. ft. (241 sq. m.) over three floors and is set back from the road by a charming front garden. The property offers flexible accommodation by providing interlinking reception rooms and the kitchen on the lower ground floor. The raised ground floor offers a further dual aspect reception room leading on to a roof terrace, as well as three further rooms and a bathroom on the raised ground floor. The house offers entrances on both lower and raised ground floors a west facing garden. The house has off street parking, and is within the St Stephen's School catchment.

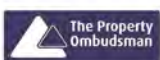
The current owners have extensively renovated and restored the house as well as added two sympathetic extensions although this still allows a buyer to add their own taste. The house has been made exceptionally cost effective and environmentally friendly to run through the use of photovoltaic cells on the roof, a highly efficient heating system and argon filled double glazed timber sash windows.

Asking Price: £2,100,000 Freehold

020 8743 1166
sales@kerrandco.com

020 8743 4332
lettings@kerrandco.com

www.kerrandco.com





Devonport Road, London W12 8NZ

Double fronted link-detached Victorian villa.
Highly flexible accommodation over three floors.

Generous living space.

Excellent natural light throughout.

Principal bedroom with en suite.

4/5 double bedrooms.

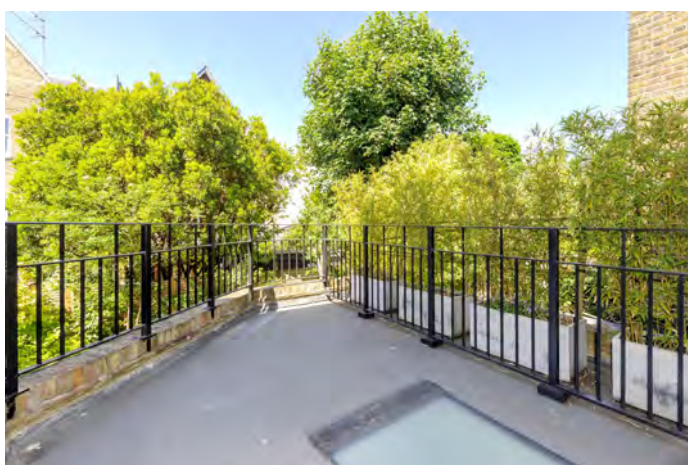
Family bathroom with separate WC, further en suite
shower room and a cloakroom on the lower ground
floor.

38' X 25' West facing rear garden and delightful roof
terrace.

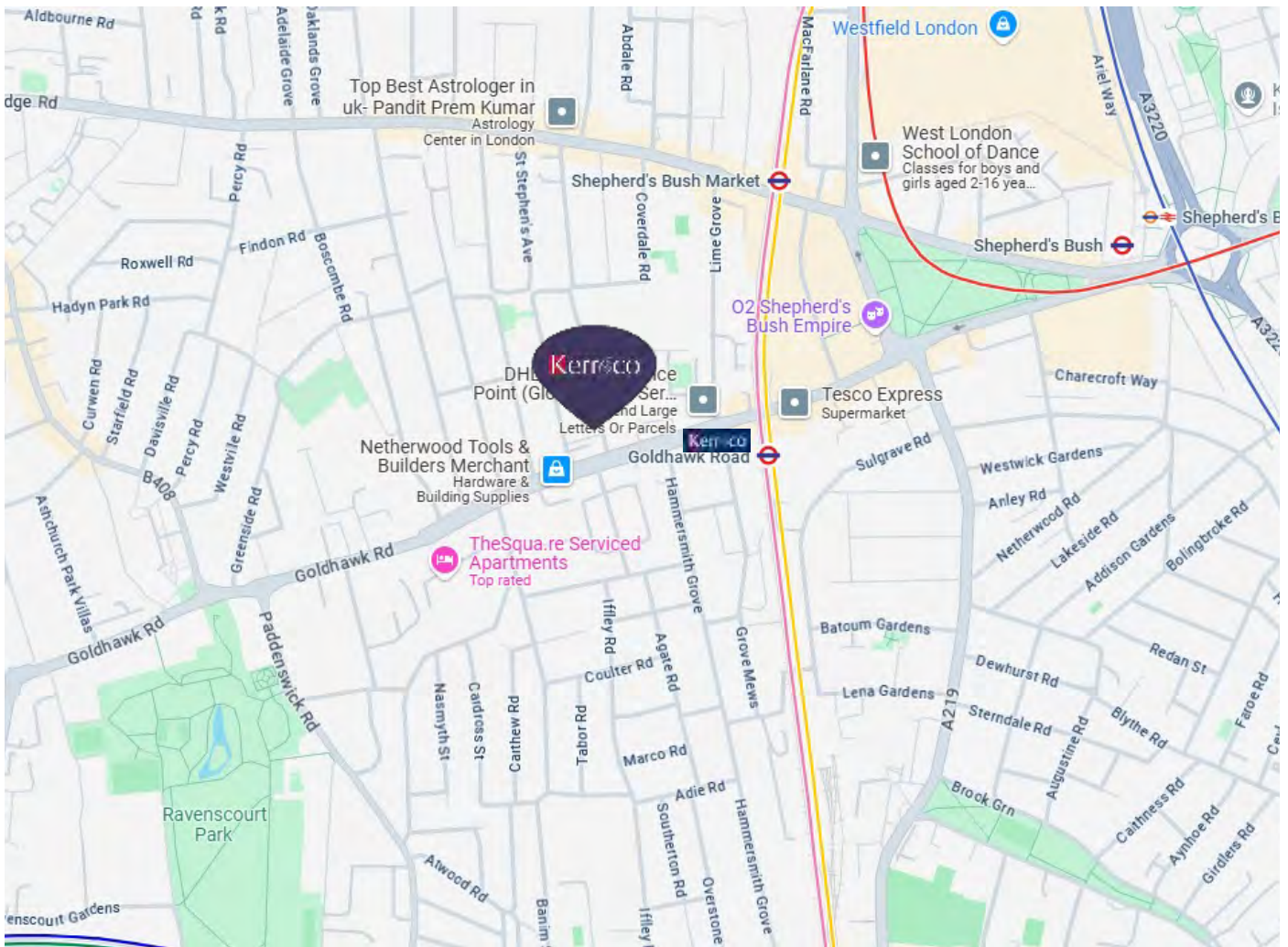
Utility room.

Off street parking.

Well located for ease of access to the broad selection
of local transport connections, shopping and
leisure facilities as well as a fantastic selection of
outstanding local state and private schools.







Score	Energy rating	Current	Potential
92+	A		
81-91	B		81 B
69-80	C	72 C	
55-68	D		
39-54	E		
21-38	F		
1-20	G		

The graph shows the current energy efficiency of your home. The higher the rating the lower your fuel bills are likely to be. The potential rating shows the effect of undertaking the recommendations on page 3. The average energy efficiency rating for a dwelling in England and Wales is band D (rating 60). The EPC rating shown here is based on standard assumptions about occupancy and energy use and may not reflect how energy is consumed by individual occupants.

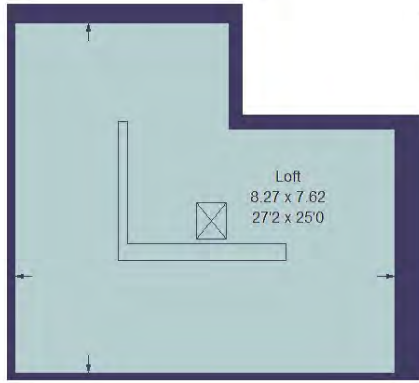
- Tenure: Freehold
- Local Authority: London Borough of Hammersmith & Fulham
- Council Tax: Band G (£2,419.03 for current financial year)
- Parking: Off street parking for one car as well as being eligible for a L.B.H.F. residents parking
- Accessibility: Steps to front doors and internal stairs
- Connected services / utilities: Mains water and drainage, gas, electricity, telephone and broadband (both fibre and cable available locally).
- Heating: Gas central heating via radiators and under floor heating on lower ground floor

Devonport Road, London W12 8NZ

Guide Price: £2,100,000

Link Detached Victorian Villa

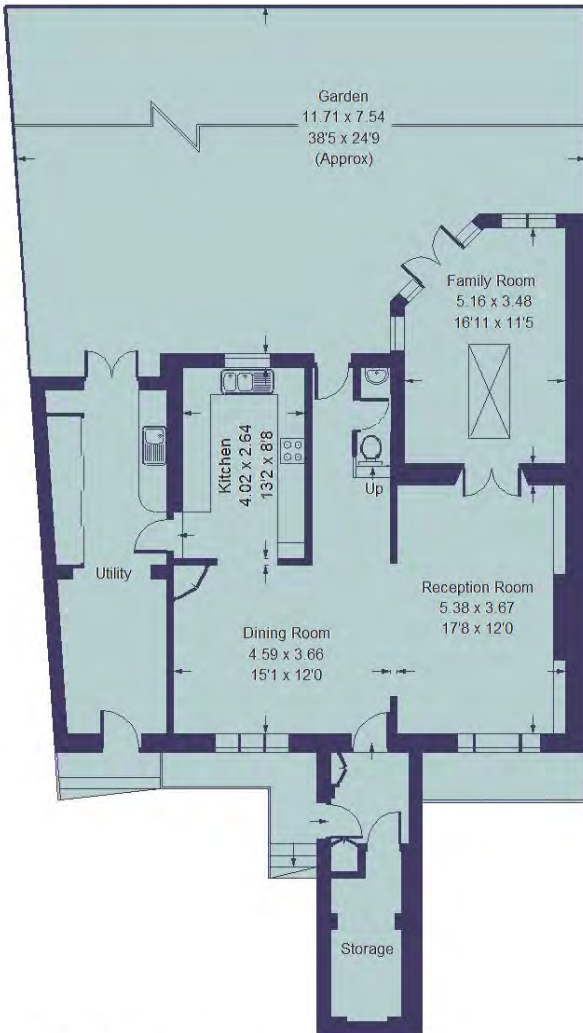
Approx. Gross Internal Floor Area: 2,594. Sq. Ft. (241 Sq. M.) Excluding loft space



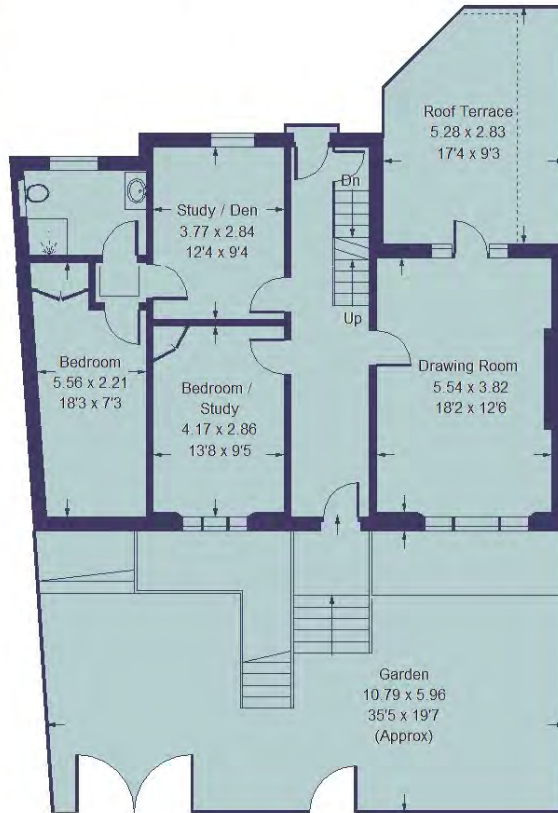
Loft



First Floor



Lower Ground Floor



Raised Ground Floor

= Reduced headroom below 1.5 m / 5'0

Whilst every attempt has been made to ensure the accuracy of the floor plan, measurements are approximate and not to scale. No guarantee is given on the total square footage of the property quoted on the plan. Figures given are for guidance. Plan is for illustration purposes only, not to be used for valuations.

Kerr & Co

77 Goldhawk Road
Shepherd's Bush
London W12 8EH
sales@kerrandco.com
020 8743 1166
www.kerrandco.com

Whilst these particulars and measurements are believed to be correct they are not guaranteed by the vendors or the vendors agents and they do not form part of any contract. Whilst every effort is made to ensure the accuracy of these details, it should be noted that any measurements are approximate only, measurements of doors, windows, rooms and any other item are approximate and no responsibility is taken for any error, omissions or mis-statements. All measurements are taken from the widest points of the room and include bay windows. Any internal photographs are intended as a guide only and it should not be assumed that any of the furniture/fitings are included in any sale. Where shown, details of lease, ground rent and service charge are provided by the vendor and their accuracy cannot be guaranteed, further checks should be made either through your solicitor/conveyancer. Wiring, plumbing or appliances have not been tested and should not be assumed to be in working order.