

BUTLER & STAG

Duckett Street, Mile End E1
London

£2,300 pcm



Duckett Street, Mile End E1

Spacious and modern two bedroom apartment with a private balcony located between Mile End and Stepney Green underground stations.

- Two Double Bedrooms
- Fourth Floor Apartment
- Modern Development with a Lift
- Two Bathrooms
- Balcony
- Located Close to Underground Stations
- Furnished
- Available from 31st July 2026





Spacious and modern two bedroom apartment with a private balcony located between Mile End and Stepney Green underground stations.

Offering bright interiors and contemporary fittings, this property would make the ideal next home for a couple or two sharing professionals.

Situated on the fourth floor and well-presented throughout, the accommodation features an open-plan kitchen/reception room leading out to a private balcony, two double bedrooms (one with an en-suite shower room), a main bathroom and hallway storage.

The location is just moments from Queen Mary University and Mile End Park / Regent's Canal. The City and the amenities of East London's social hotspots including Shoreditch, Spitalfields and Victoria Park are also all within easy reach.

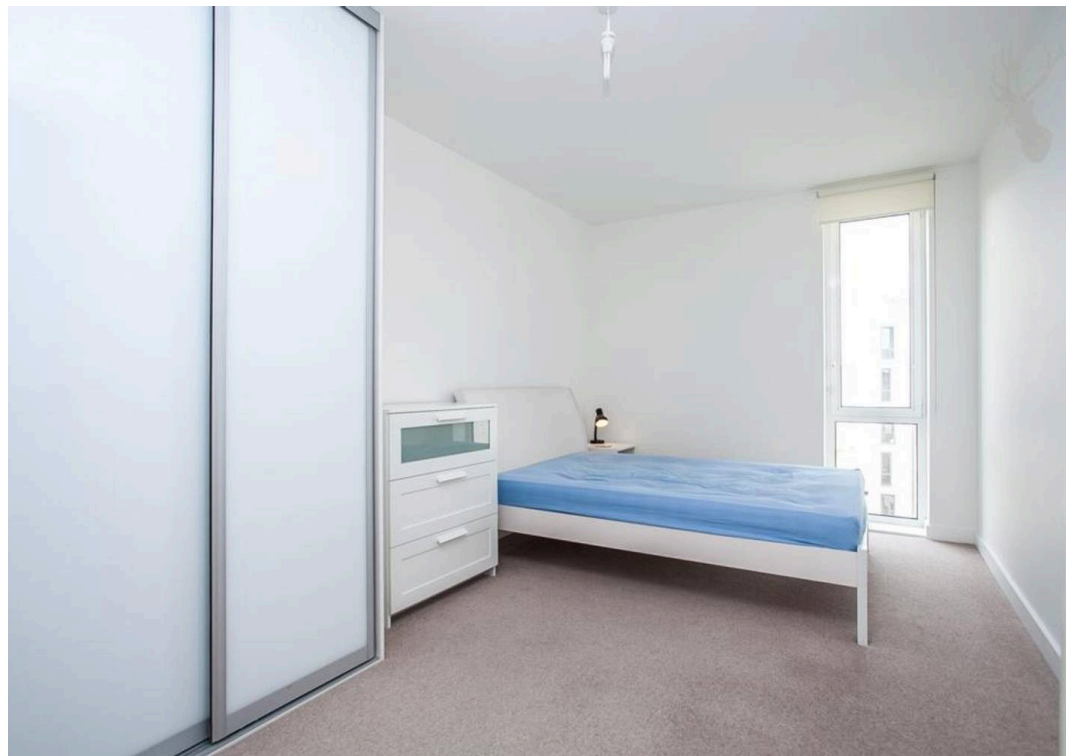
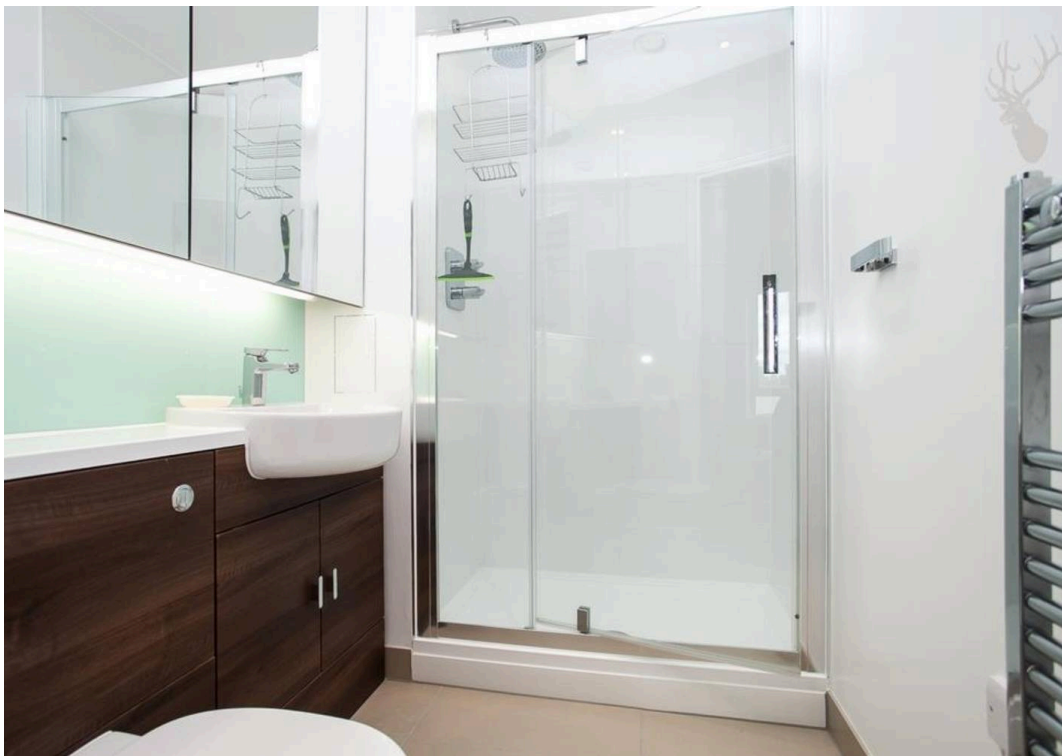
Offered furnished and available from 31st July 2026.

Council Tax band: D

EPC Energy Efficiency Rating: B

EPC Environmental Impact Rating: B





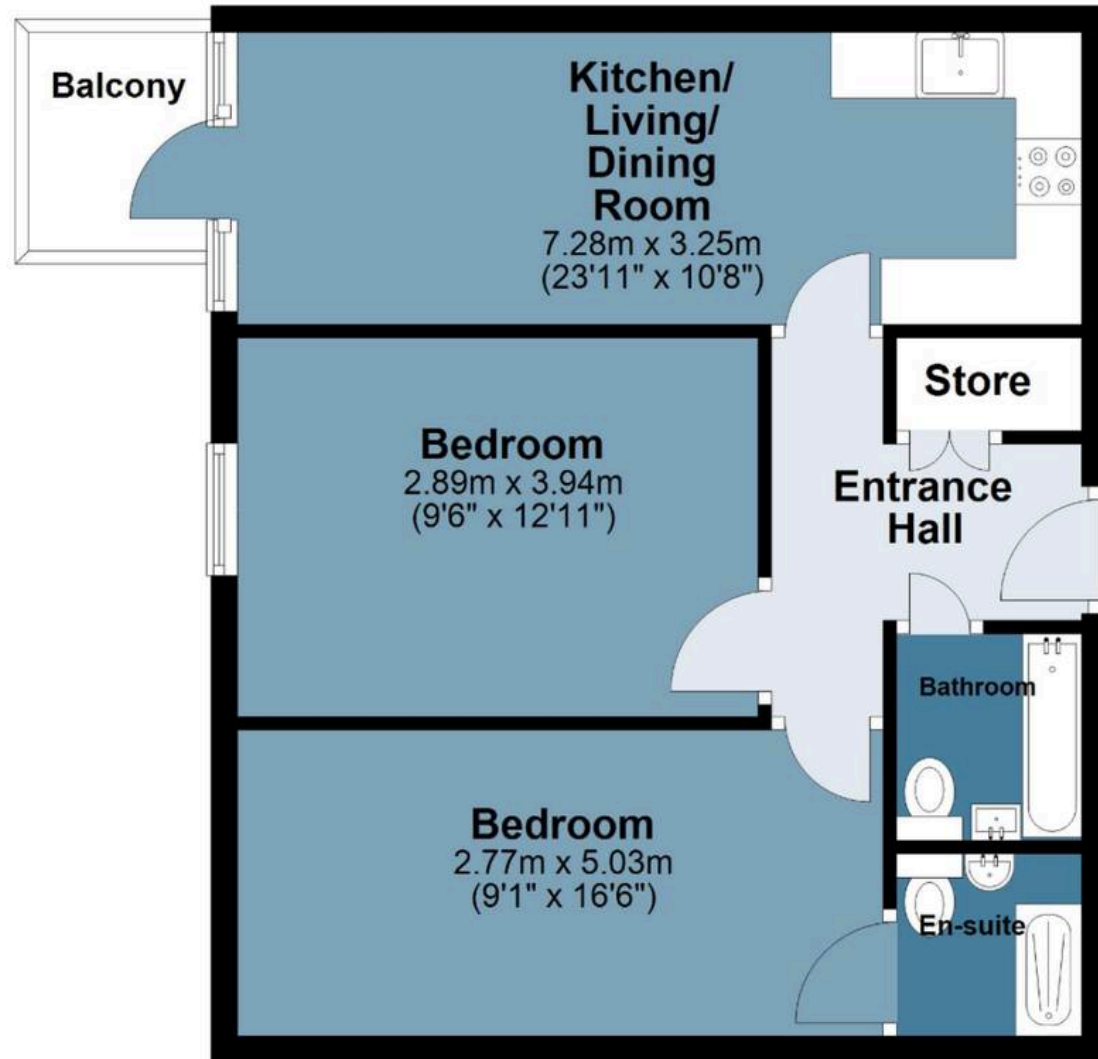
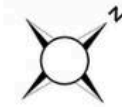


Duckett Street

Approx. Gross Internal Area 67 sq. metres (721 sq. feet)

Fourth Floor

Approx. 67 sq. metres (721 sq. feet)
(excluding Balcony)



Measurements are approximate and for illustration purposes only. While we do not doubt the accuracy and completeness, we advise you conduct a careful independent assessment of the property to determine monetary value

FROM EAST LONDON ENERGY TO WEST ESSEX EASE

We Make Moving Home Easy.

At Butler and Stag, we do more than just connect London to West Essex – we make the move seamless. With offices spanning from vibrant East London to the tranquillity of West Essex, we understand the nuances of each area and the journey people take between them. Our marketing goes beyond standard listings, showcasing every property with precision, creativity, and reach that others simply can't match. Coupled with an unparalleled attention to detail, from first enquiry to final move-in, we ensure every client and customer feels informed, supported, and confident. Simply put, we do the little things that make a big difference, setting us apart in every step of the property experience.



LONDON STRATFORD SOUTH WOODFORD BUCKHURST HILL LOUGHTON EPPING BEYOND

Like what you see? Let's talk

Book your **FREE** valuation now



020 8102 1236

london@butlerandstag.com

508 Roman Road, Bow, London, E3 5LU

butlerandstag.uk

IMPORTANT NOTICE - These particulars have been prepared in good faith and they are not intended to constitute part of an offer or contract. We have not performed a structural survey on this property and the services, appliances and specific fittings have not been tested. All photographs, measurements, floor plans and distances referred to are given as a guide and should not be relied upon.

BUTLER & STAG

