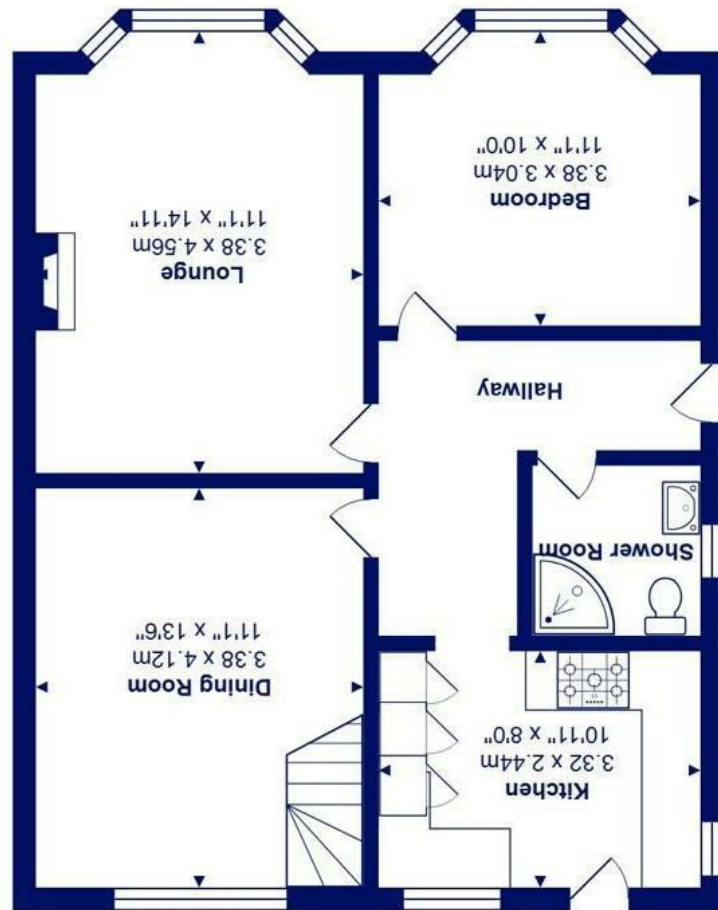




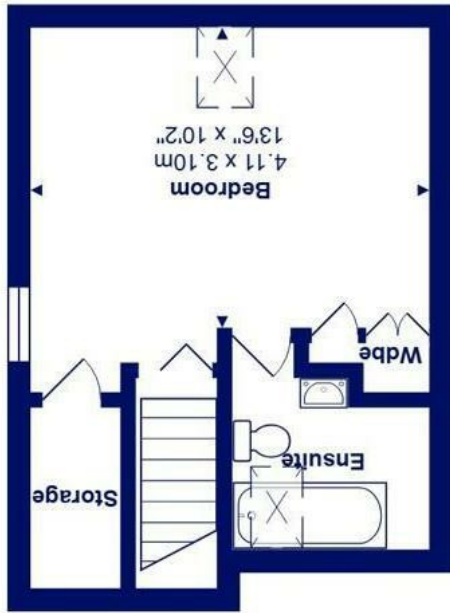
All measurements are approximate and for display purposes only
Total Area: 82.0 m² ... 883 ft²



Ground Floor



First Floor



2 Dennistoun Avenue, Christchurch, BH23 3QL

£335,000

Mitchells
1963 — TODAY

A clean and tidy, detached chalet bungalow of about 885 sq ft, offered with no forward chain and with potential to improve. The property has been recently redecorated and had a new, ground floor shower room fitted and is just a short stroll from the local shops on Somerford Road and the Mudeford Infants and Junior School.

The property started life as a straight bungalow but was converted to create an additional bedroom/hobbies room with en-suite in the roof space. The property could benefit from some updating in parts but is ready to move into straight away. Our clients will be arranging for a up to date boiler service and electrical certificate.

- Older style detached chalet bungalow of about 885 sq ft
- Three bedrooms and two bath/shower rooms (ground floor shower room recently replaced and re-tiled)
- Bright and airy sitting room
- Fitted kitchen
- Off road parking and private gardens
- Close to bus stop, local supermarkets and catchment of both Mudeford Infant and Junior Schools
- Gas fired heating, UPVC double glazed windows
- No forward chain

EPC Rating Band: D
Council Tax Band: D
Freehold

