



27 Berw Road, Pontypridd, CF37 2AA
£900 Per Calendar Month

**** Walk to Town, Park & Train/Bus Links ** Two Bedrooms ** Available Now ****

Well presented mid terraced house, ideally placed for access to the Town Centre with its many amenities, cafes, shops & bars, park, train/bus links and A470 bypass.

Comprising entrance lobby, lounge, modern kitchen with oven & hob, bathroom and two bedrooms.

There is a rear yard and access to a parking space.

Council Tax B - EPC rating C

Ready to move into now.

Entrance Lobby

Lounge 13'3" x 10'1" (4.06 x 3.09)



Bedroom 2



Outside

Kitchen 13'4" x 8'4" (4.07 x 2.56)

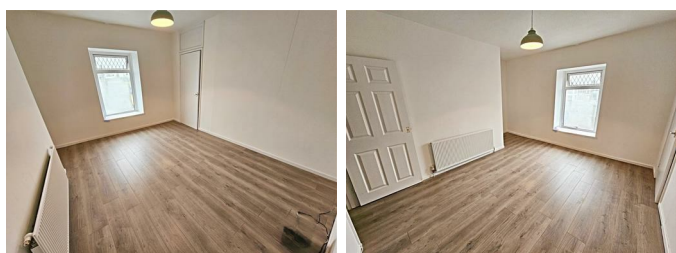


Bathroom



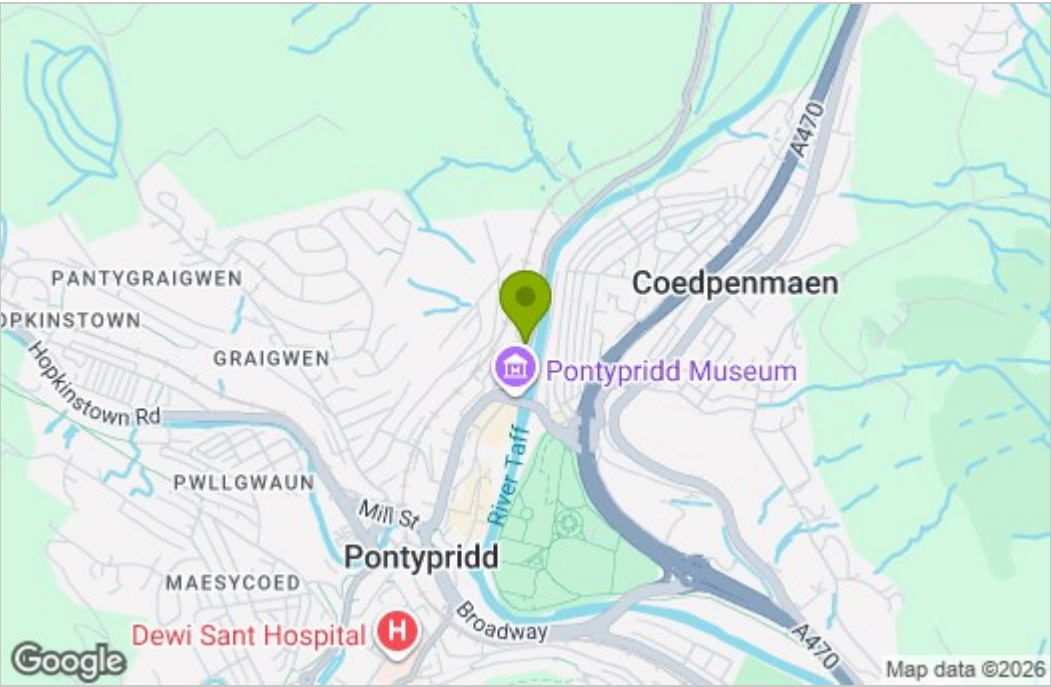
First Floor Landing

Bedroom 1

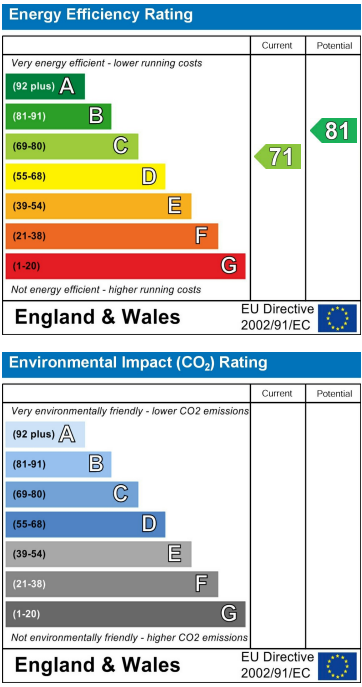


Floor Plan

Area Map



Energy Efficiency Graph



These particulars, whilst believed to be accurate are set out as a general outline only for guidance and do not constitute any part of an offer or contract. Intending purchasers should not rely on them as statements of representation of fact, but must satisfy themselves by inspection or otherwise as to their accuracy. No person in this firms employment has the authority to make or give any representation or warranty in respect of the property.