



13 Austen Crescent, Swindon

Swindon

Offers Over £325,000  
mefarlane  
property.co.uk

# 13 Austen Crescent

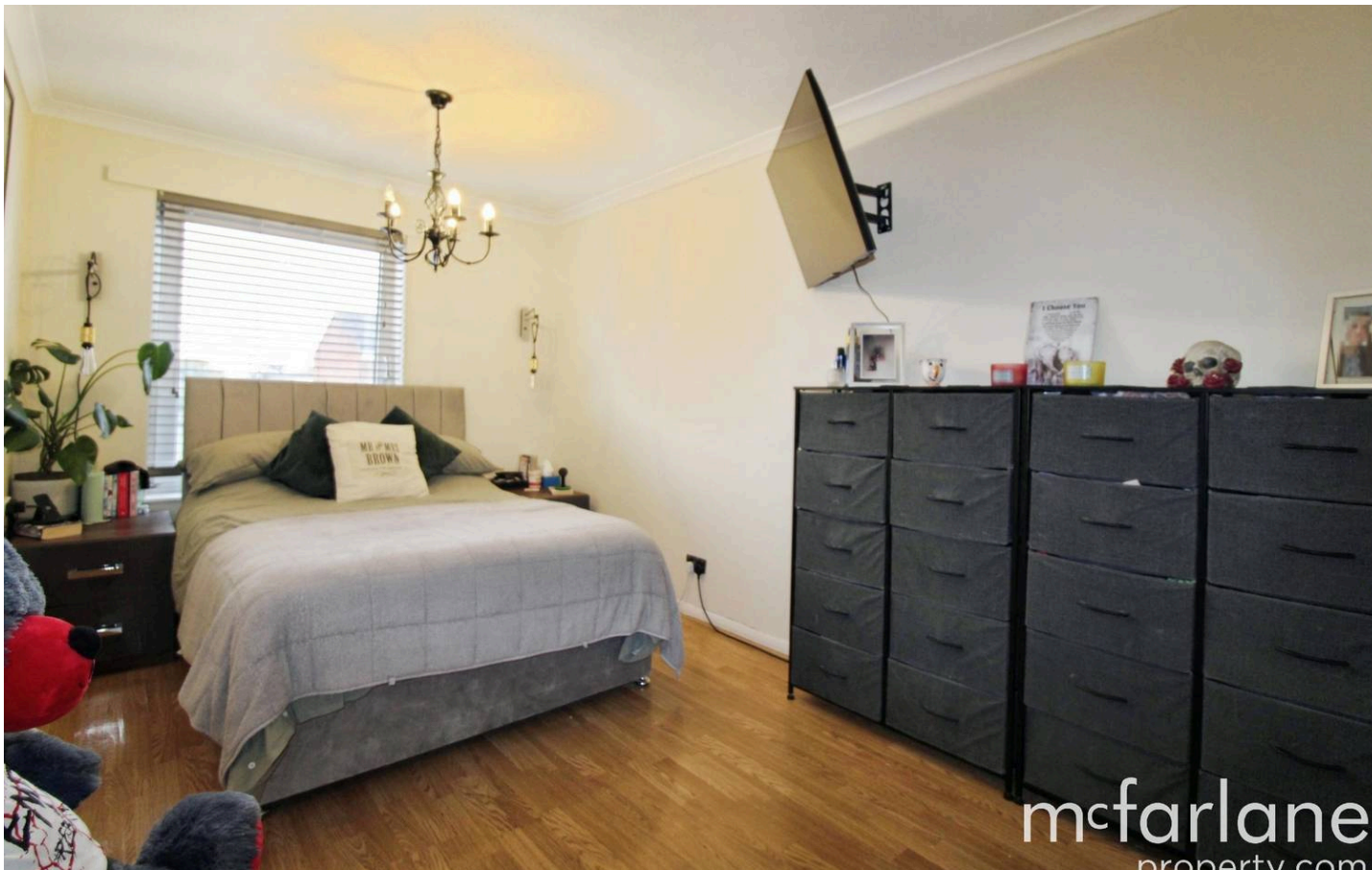
Swindon, Swindon

A beautifully presented and thoughtfully extended family home in the popular Liden area. A useful porch provides access to the generous sitting room with media wall and attractive central fireplace, the sitting room is open to the well appointed modern kitchen/ dining room which in turn leads to the rear garden. Also to the ground floor there are two bedrooms and a modern shower room with utility facilities. To the first floor there are an additional three bedrooms and the three piece family bathroom.

To the front of the property is a block paved driveway and side access to the fully enclosed rear garden with patio and raised decking area.

- RECENTLY RENOVATED SITTING ROOM
- MODERN HIGH END KITCHEN
- FIVE BEDROOMS
- DRIVEWAY PARKING
- THOUGHTFULLY EXTENDED
- ENCLOSED REAR GARDEN
- END TERRACE
- POPULAR LOCATION

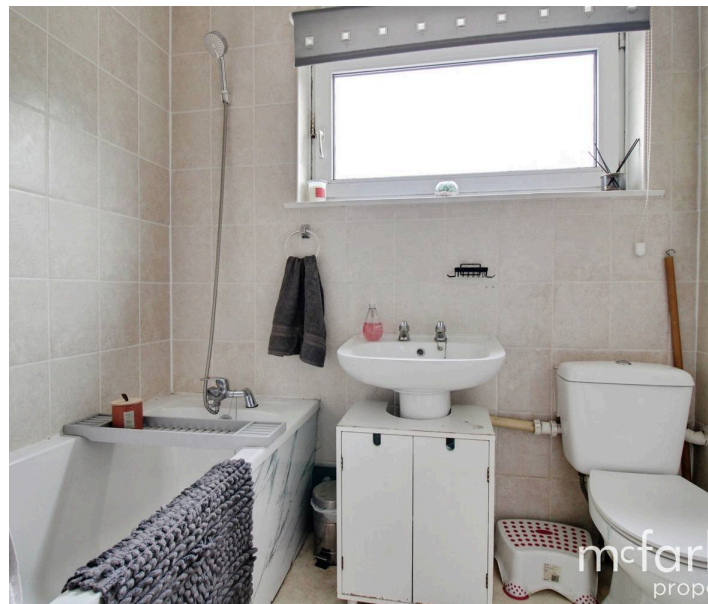




## 13 Austen Crescent

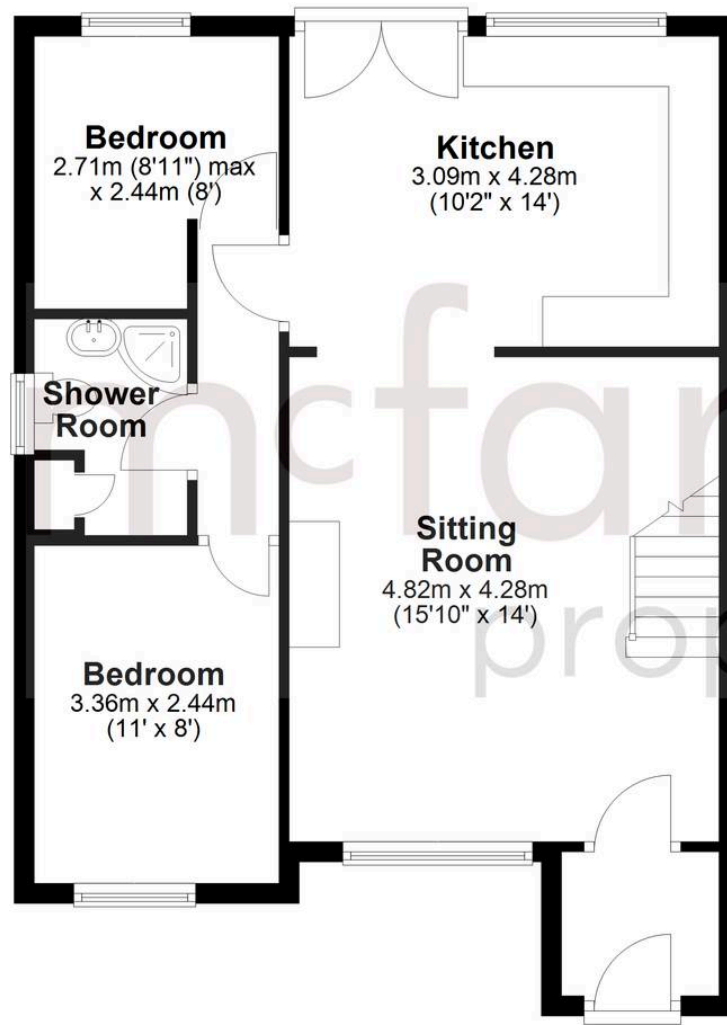
Swindon, Swindon

- RECENTLY RENOVATED SITTING ROOM
- MODERN HIGH END KITCHEN
- FIVE BEDROOMS
- DRIVEWAY PARKING
- THOUGHTFULLY EXTENDED
- ENCLOSED REAR GARDEN
- END TERRACE
- POPULAR LOCATION



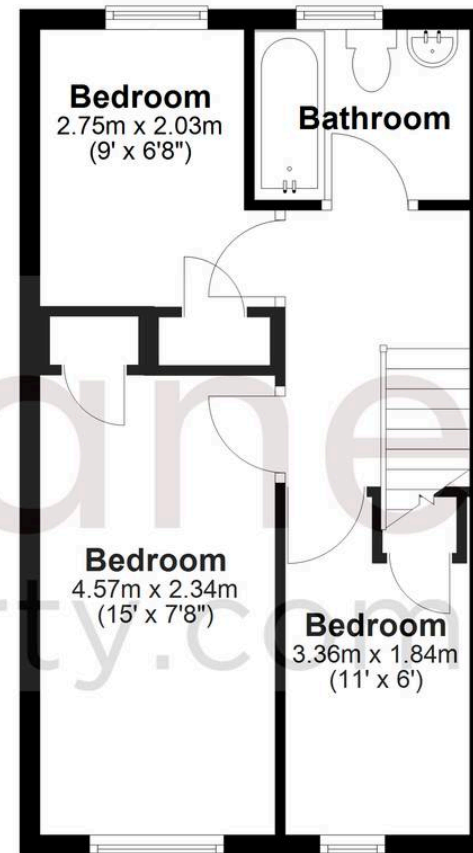
## Ground Floor

Approx. 58.0 sq. metres (623.8 sq. feet)



## First Floor

Approx. 34.2 sq. metres (368.6 sq. feet)



Total area: approx. 92.2 sq. metres (992.4 sq. feet)

## McFarlane Sales & Lettings

McFarlane Sales & Letting Ltd, 28-30 Wood Street – SN1 4AB

01793 296880 • oldtown@mcfarlaneproperty.com • [www.mcfarlaneproperty.com/](http://www.mcfarlaneproperty.com/)

**mcfarlane**  
property.com