



Rivermead, KT1

£1,895 Per calendar month

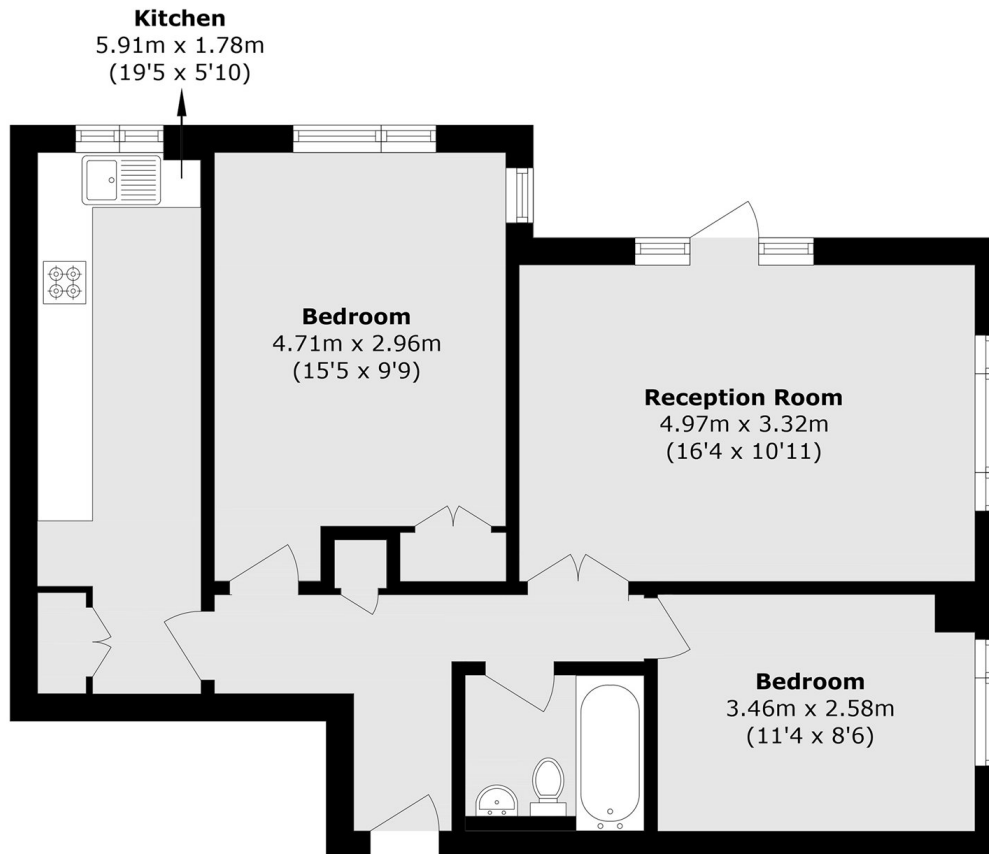
A ground floor apartment in a central location. It has a large reception room, a recently modernised separate kitchen, two double bedrooms, a modern bathroom and a communal garden.

Uxbridge Road is a highly desirable river road and approximately half a mile away from everything Surbiton town centre has to offer, including the train station.

Features

- Ground Floor
- Large Reception Room
- Two Double Bedrooms
- Recently Modernised
- Communal Garden
- River Road Location

Rivermead, Kingston Upon Thames, KT1



Total area (approx.): 64.3 sq. m (692.1 sq. ft)