



Arncliffe Drive, Heelands, Milton Keynes, MK13 7LQ

welcome to

Arncliffe Drive, Heelands, Milton Keynes

Situated in the popular and established residential area of Heelands, this well-presented three-bedroom end-terraced home on Arncliffe Drive offers spacious and versatile accommodation ideal for first-time buyers, growing families, or investors alike.

Entrance Hall

Double-glazed door to the front, stairs to the first floor, 2 storage cupboards and a radiator. Doors to bedroom one, bathroom and the kitchen.

Bathroom

Partially tiled with a wash hand basin with mixer tap and a cupboard under, low-level WC and a bath with a shower over. Double-glazed obscured window to the side.

Bedroom Two

Radiator and double-glazed window to the front.

Kitchen

Fitted with a mix of wall and base units with work surface over, 1.5 bowl stainless steel sink with mixer tap and drainer, integrated electric oven and gas hob. Space for a fridge/freezer, washing machine and dishwasher. Radiator and double-glazed windows to the rear and side. Door to the lounge and opening into the dining room.

Dining Room

Radiator and space for a dining table and chairs. Double-glazed windows to the rear and side plus a double-glazed Patio doors leading out to the garden. Glazed double doors to the lounge.

Lounge

TV point, carpet, radiator and 2 skylights. Glazed doors to the dining room and door to the kitchen.

First Floor Landing

Stairs from the ground floor and loft access. Doors to bedrooms one and three plus the family bathroom.

Bedroom One

Carpet, radiator and double-glazed velux style windows to the front and rear.

Bedroom Three

Radiator and double-glazed velux style window to the front.

Shower Room

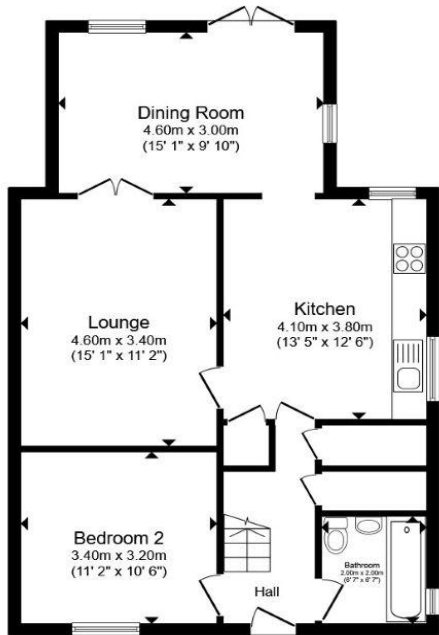
Tiled with a wash hand basin with mixer tap sitting on a low-level WC and a shower tray with curtain. Double-glazed velux style window to the front.

Outside Front Garden

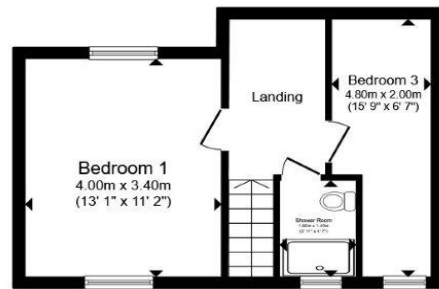
Shingle frontage with shrubs and a path leading to the front door.

Rear Garden

Enclosed by shrub and fencing borders the garden is laid with a raised lawn area, flower and shrub borders and a patio area. A path leads to a shed.



Ground Floor



First Floor

Total floor area 100.9 m² (1,087 sq.ft.) approx

This floor plan is for illustrative purposes only. It is not drawn to scale. Any measurements, floor areas (including any total floor area), openings and orientation are approximate. No details are guaranteed, they cannot be relied upon for any purpose and they do not form part of any agreement. No liability is taken for any error, omission or misstatement. A party must rely upon its own inspection(s). Powered by www.propertybox.io



welcome to
Arncliffe Drive,
Heelands, Milton Keynes

- THREE-BEDROOM END-TERRACE
- SPACIOUS LIVING ROOM
- DINING ROOM WITH GARDEN ACCESS
- BATHROOM & SHOWER ROOM
- PRIVATE REAR GARDEN

Tenure: Freehold EPC Rating: C
Council Tax Band: B

£295,000



view this property online [brownandmerry.co.uk/Property/NPL108060](https://www.brownandmerry.co.uk/Property/NPL108060)



Property Ref:
NPL108060 - 0005

1. MONEY LAUNDERING REGULATIONS Intending purchasers will be asked to produce identification documentation at a later stage and we would ask for your co-operation in order that there is no delay in agreeing the sale. 2. These particulars do not constitute part or all of an offer or contract. 3. The measurements indicated are supplied for guidance only and as such must be considered incorrect. Potential buyers are advised to recheck measurements before committing to any expense. 4. We have not tested any apparatus, equipment, fixtures or services and it is in the buyers interest to check the working condition of any appliances. 5. Where an EPC, or a Home Report (Scotland only) is held for this property, it is available for inspection at the branch by appointment. If you require a printed version of a Home Report, you will need to pay a reasonable production charge reflecting printing and other costs. 6. We are not able to offer an opinion either written or verbal on the content of these reports and this must be obtained from your legal representative. 7. Whilst we take care in preparing these reports, a buyer should ensure that his/her legal representative confirms as soon as possible all matters relating to title including the extent and boundaries of the property and other important matters before exchange of contracts.

Brown & Merry is a trading name of Sequence (UK) Limited which is registered in England and Wales under company number 4268443, Registered Office is Cumbria House, 16-20 Hockliffe Street, Leighton Buzzard, Bedfordshire, LU7 1GN. VAT Registration Number is 500 2481 05.


brown & merry



01908 611242



newportpagnell@brownandmerry.co.uk



74A High Street, Newport Pagnell, MILTON
KEYNES, Buckinghamshire, MK16 8AQ



[brownandmerry.co.uk](https://www.brownandmerry.co.uk)