



CORNERSTONE
RESIDENTIAL ESTATE AGENTS

**ETHOLWOLD DRIVE, WICKHAM MARKET, IP13
OFL**

TENURE : FREEHOLD

ASKING PRICE £630,000

- Brand New Detached Home
- Available Now
- Four Bedrooms
- Two En-Suites
- Garage & Parking
- High Quality Finish

THE ACCOMMODATION



Kitchen/Breakfast Area 6.45m x 4.02m (21' 2" x 13' 2")

Utility 20.02m x 1.84m (65' 8" x 6')

Living Room 4.73m x 4.60m (15' 6" x 15' 1")

Study 3.18m x 2.02m (10' 5" x 6' 8")



Bedroom One & En-Suite 3.92m x 3.91m (12' 10" x 12' 10")

(Max measurements of bedroom only)

Bedroom Two & En-Suite 3.07m x 2.99m (10' 1" x 9' 10")

(Max measurements of bedroom only)

Bedroom Three 3.21m x 2.81m (10' 6" x 9' 3")



Bedroom Four 3.39m x 2.64m (11' 1" x 8' 8")

THE PROPERTY & LOCATION

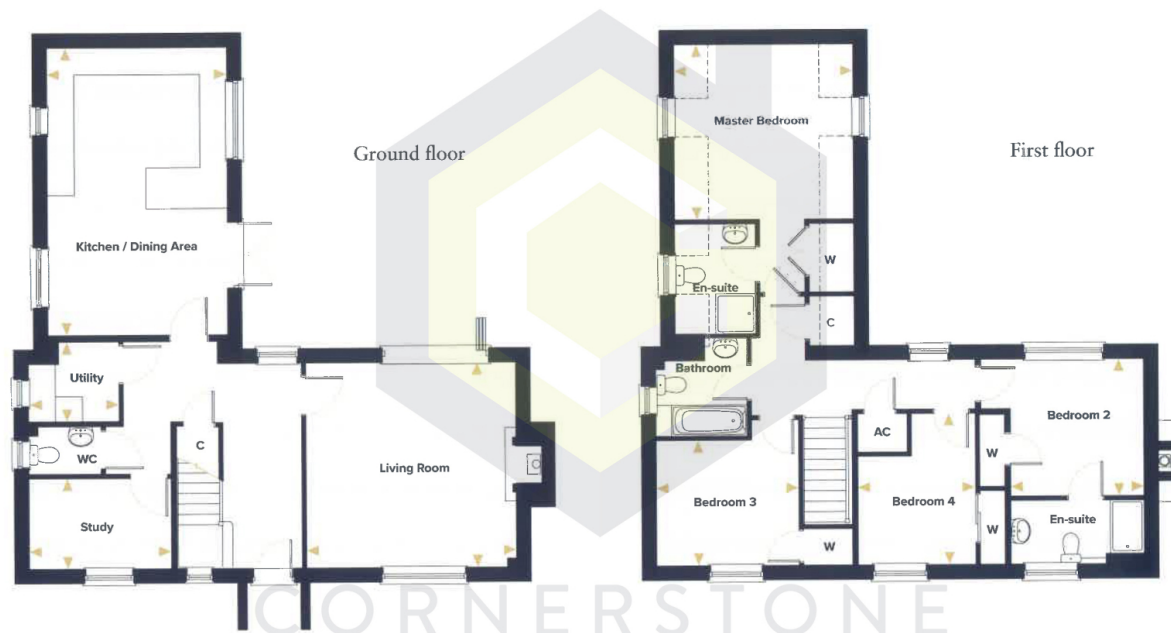
A substantial brand new four-bedroom home offering accommodation of over 1685 square feet, within the superb Wickham Gate development.

Ready for Move In Now! With flooring throughout, integrated dishwasher & fridge/freezer, turf to rear garden, garage & parking.

Wickham Market is a large village with an excellent range of amenities on offer including a range of shops, restaurants, doctors surgery, library, dentist, a primary school and a church. The A12 is within easy reach, along with Woodbridge, and theres a mainline railway station at Campsea Ashe.



TO ARRANGE A VIEWING OF THIS PROPERTY OR
TO SEE HOW WE CAN HELP YOU MOVE CALL US ON 01394 547000



Service Charge: £209.09 pa

We understand from our vendor that the property is connected to a mains gas supply, electricity, water and drainage.

Please visit Ofcom - to view the mobile and network coverage



42 MARKET HILL, WOODBRIDGE, SUFFOLK, IP12 4LU
T:01394 547000 E:WOODBRIDGE@CR-EA.CO.UK W:CR-EA.CO.UK
CORNERSTONE RESIDENTIAL LTD IS A REGISTERED COMPANY IN ENGLAND & WALES
REGISTERED NUMBER: 9421778
REGISTERED OFFICE: 42 MARKET HILL, WOODBRIDGE, IP12 4LU

Disclaimer

Whilst every care has been taken in the preparation of these particulars, and they are believed to be correct, they are not warranted and intending purchasers/lessees should satisfy themselves as to the correctness of the information given