

**29 Stourhead Drive**

**TOWCESTER  
NN12 6PX**

**£235,000**



- **COACHHOUSE**
- **FREEHOLD**
- **ALLOCATED PARKING WITH EV CHARGER**
- **UPVC DOUBLE GLAZED**

- **ONE BEDROOM**
- **GARDEN**
- **OPEN PLAN LOUNGE/DINING/KITCHEN**
- **ENERGY EFFICIENCY RATING: TBC**

To arrange a viewing call us today on 01604 639933 or visit [www.horts.co.uk](http://www.horts.co.uk)



**PERSONAL • PROFESSIONAL • PROACTIVE**

Welcome to this charming modern coachhouse located on Stourhead Drive in the picturesque town of Towcester. This delightful property offers a perfect blend of comfort and contemporary living, making it an ideal choice for individuals or couples seeking a stylish home.

Upon entering, you will be greeted by a spacious open-plan lounge, dining, and kitchen area, which creates a warm and inviting atmosphere. This layout is perfect for entertaining guests or simply enjoying a quiet evening at home. The well-designed kitchen is equipped with modern appliances, ensuring that cooking is a pleasure.

The property features one generously sized bedroom, providing a peaceful retreat for rest and relaxation. The bathroom is thoughtfully designed, offering both functionality and comfort.

In addition to its appealing interior, this coachhouse comes with allocated parking for one vehicle, adding to the convenience of living in this lovely home. The location on Stourhead Drive is ideal, with easy access to local amenities and the beautiful countryside that surrounds Towcester.

This modern coachhouse is not just a property; it is a lifestyle choice that offers both comfort and convenience in a charming setting. Whether you are looking to buy or rent, this home is sure to impress. Do not miss the opportunity to make this delightful coachhouse your own.

## **Ground Floor**

### **Entrance Hall**

Vinyl flooring, radiator, stairs leading to first floor landing, door to private garden.

## **First Floor**

### **Entrance Landing**

Radiator, built in storage cupboard, two UPVC double glazed windows to rear, doors to:

### **Open Plan Lounge/Dining/Kitchen**

18'8" x 14'10" (5.70 x 4.54)

### **Kitchen Area**

Modern fitted kitchen comprising sink unit with base cupboards below, a range of floor standing cupboards with worktops above, eye level cupboards, fitted gas hob with extractor fan above, electric oven, built in fridge/freezer, dishwasher and washing machine, vinyl flooring, radiator, UPVC double glazed window to rear.

### **Lounge/Dining Area**

TV point, radiator, two UPVC double glazed windows to front.

### **Bedroom**

13'6" x 9'5" (4.13 x 2.89)

Radiator, built in wardrobes, two UPVC double glazed windows to front.

### **Bathroom**

Suite comprising bath unit with shower unit above, hand wash basin, low level w.c, heated towel rail, tiled splash backs.

## **Externally**

**Front Garden**

Flower and shrub borders, path to front door.

**Rear Garden**

Paved patio, timber shed.

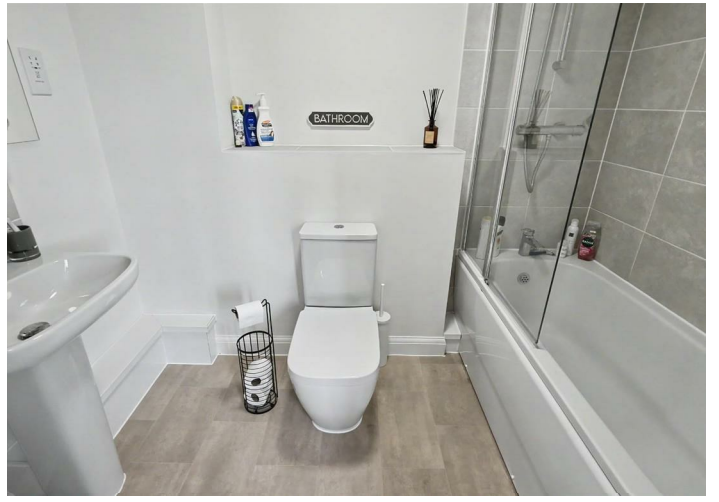
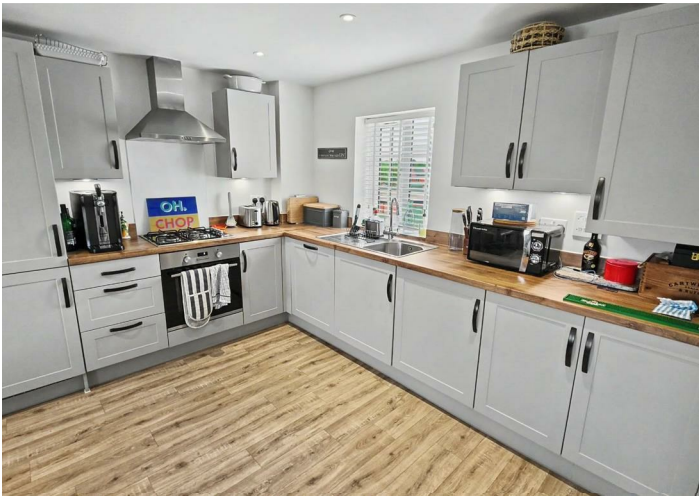
**Parking**

Allocated parking to the rear in private car park, EV charger.

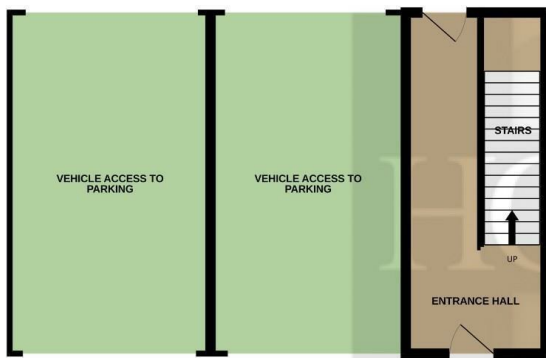
**Agents Notes**

West Northampton Council Tax Band: TBC

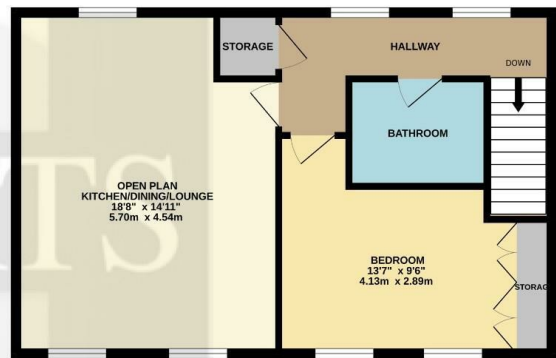




GROUND FLOOR  
153 sq.ft. (14.3 sq.m.) approx.



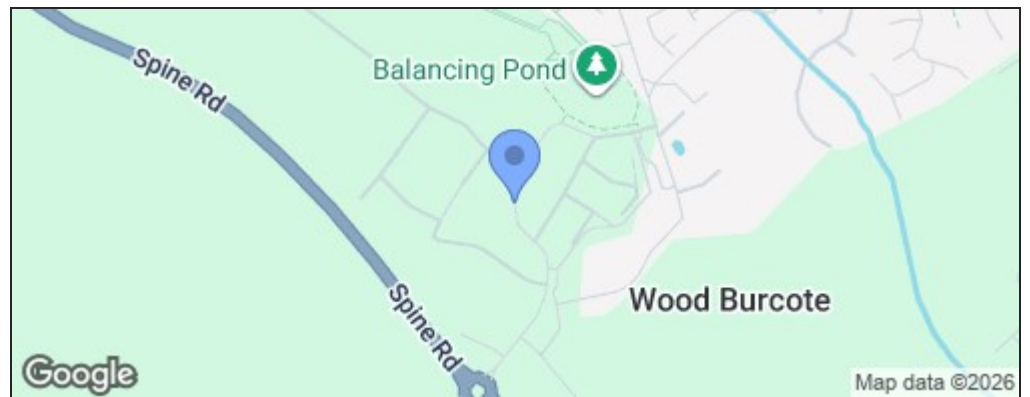
1ST FLOOR  
588 sq.ft. (54.6 sq.m.) approx.



TOTAL FLOOR AREA : 742 sq.ft. (68.9 sq.m.) approx.

Whilst every attempt has been made to ensure the accuracy of the floorplan contained here, measurements of doors, windows, rooms and any other items are approximate and no responsibility is taken for any error, omission or mis-statement. This plan is for illustrative purposes only and should be used as such by any prospective purchaser. The services, systems and appliances shown have not been tested and no guarantee as to their operability or efficiency can be given.  
Made with Metropix ©2025

Energy Efficiency Rating		
	Current	Potential
<i>Very energy efficient - lower running costs</i>		
(92 plus) <b>A</b>		
(81-91) <b>B</b>		
(69-80) <b>C</b>		
(55-68) <b>D</b>		
(39-54) <b>E</b>		
(21-38) <b>F</b>		
(1-20) <b>G</b>		
<i>Not energy efficient - higher running costs</i>		
<b>England &amp; Wales</b>	EU Directive 2002/91/EC	



**Disclaimer**

These particulars, whilst believed to be accurate are set out as a general outline only for guidance and do not constitute any part of an offer or contract. Intending purchasers should not rely on them as statements or representation of fact, but must satisfy themselves by inspection or otherwise as to their accuracy. We have not carried out a detailed survey nor tested the services, appliances and specific fittings. Room sizes should not be relied upon for carpets and furnishings. The measurements given are approximate. No person in this firm's employment has the authority to make or give any representation or warranty in respect of the property.