



THE VISTA BUILDING, SE18

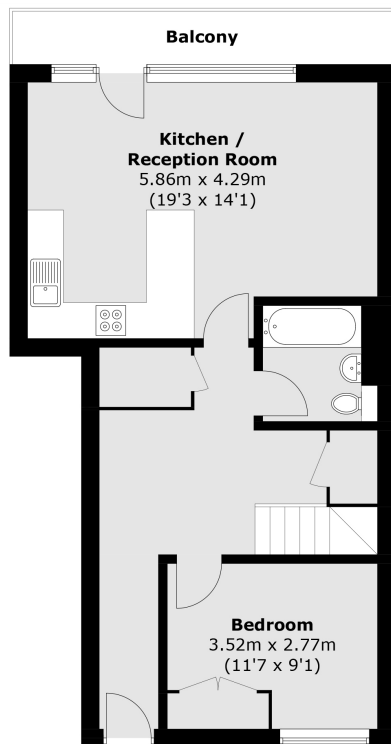
£2,400 PCM

A modern three bedroom, two bathroom apartment situated on the 10th floor of a modern purpose built development in Woolwich. This spacious flat has a private balcony with panoramic views across Docklands and the

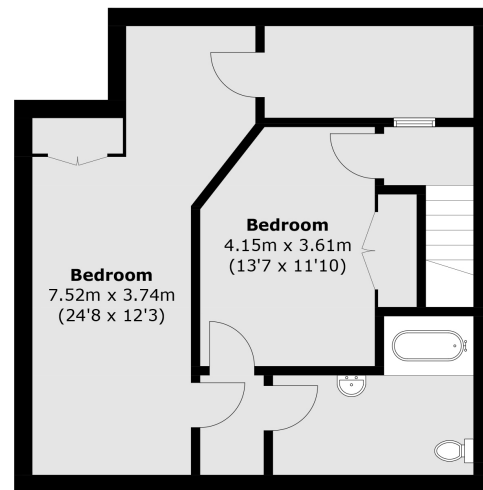
Split level apartment
Tenth floor
Three bedrooms

Fitted kitchen
En suite shower room
Energy rating: C

STEP INSIDE THE VISTA BUILDING



Tenth Floor



Eleventh Floor

Total area (approx.): 109.0 sq. m (1,173.3 sq. ft)
Balcony: 5.7 sq. m (61.3 sq. ft)

Charlton
020 8293 0454

Energy Rating: C We aim to make our particulars both accurate and reliable. However, they are not guaranteed; nor do they form part of an offer or contract. If you require clarification on any points then please contact us, especially if you're traveling some distance to view. Please note that appliances and heating systems have not been tested and therefore no warranties can be given as to their good working order

**MARSH &
PARSONS**