



Metro Central Heights

119 Newington Causeway, SE1

£4,000 per month
(£923.08 per week)

A truly superb property offering panoramic views of the London Skyline. This spacious three double bedroom sub penthouse apartment boasts two bathrooms, 3 double bedrooms and 2 private outside spaces with incredible views.

CHESTERTONS



Metro Central Heights

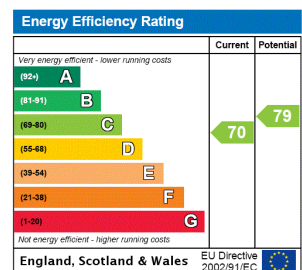
119 Newington Causeway, SE1

- THREE BEDROOMS
- TWO BATHROOMS
- FURNISHED
- BALCONY
- CONCIERGE



A truly superb property offering panoramic views of the London Skyline. This spacious three double bedroom sub penthouse apartment boasts two bathrooms, 3 double bedrooms and 2 private outside spaces with incredible views.

Minimum Term: 12 months
Deposit Required: £4,615.38
Local Authority: London Borough of Southwark
Council Tax Band: F
EPC Rating: C



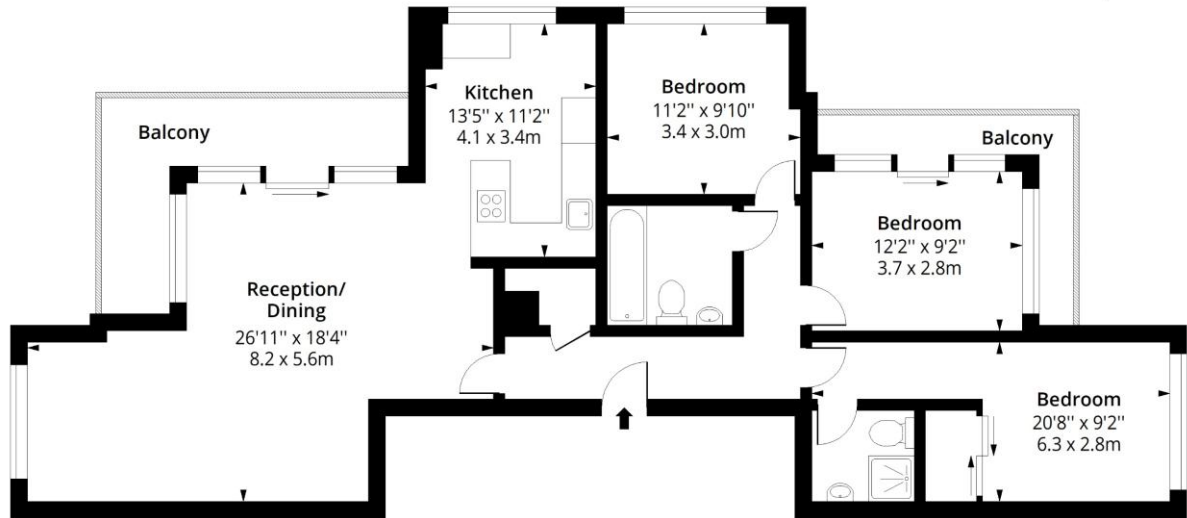
Chestertons Tower Bridge Lettings

220 Tower Bridge Road
 Tower Bridge
 London
 SE1 2UP
 towerbridgelettingsusers@chestertons.co.uk
 02073576911
 chestertons.co.uk

Additional tenant charges apply (fees apply to non-AST tenancies only)
 Tenancy Agreement Fee: £300
 References per Tenant/Guarantor: £60
 Inventory check (approx. £100 – £250 inc. VAT)
 chestertons.co.uk/property-to-rent/applicable-fees

Metro Central Heights, SE 1

Approx. Gross Internal Area 1105 Sq Ft - 102.65 Sq M
Approx. Gross Balcony Area 157 Sq Ft - 14.59 Sq M



Fourteenth Floor
Floor Area 1105 Sq Ft - 102.65 Sq M



Measured according to RICS IPMS2. Floor plan is for illustrative purposes only and is not to scale. Every attempt has been made to ensure the accuracy of the floor plan shown, however all measurements, fixtures, fittings and data shown are an approximate interpretation for illustrative purposes only. 1 sq m = 10.76 sq feet.

lpaplus.com

Date: 3/6/2024

Chesterton UK Services Limited trading as Chestertons for themselves and for the vendor of this property whose agents they are, give notice that (i) these particulars do not constitute any part of an offer or contract, (ii) all statements contained within these particulars are made without responsibility on the part of Chestertons or the vendor, (iii) whilst made in good faith, none of the statements contained within these particulars are to be relied upon as a statement or representation of fact, (iv) any intending purchasers must satisfy themselves by inspection or otherwise as to the correctness of each of the statements contained within these particulars, (v) the vendor does not make or give either Chestertons or any person in their employment any authority to make or give representation or warranty whatsoever in relation to this property. Wide angle lenses may be used. ©Copyright Chestertons | Chesterton Global Ltd | Registered Office 5th Floor, The Lantern, 75 Hampstead Road, London, NW1 2PL Registered Company Number 05334580.



This paper is
100% recyclable