

30 Avondale Mews  
Kettering  
NN16 8QD

£140,000 offers in excess of

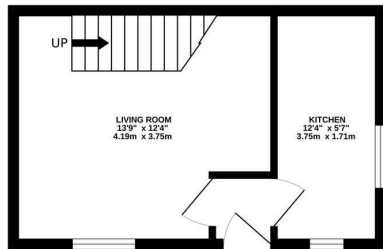


OSCAR JAMES

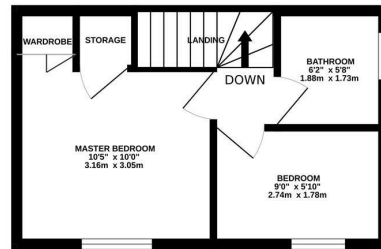
...expect excellence

# FLOOR PLANS

GROUND FLOOR  
239 sq.ft. (22.2 sq.m.) approx.



1ST FLOOR  
239 sq.ft. (22.2 sq.m.) approx.



TOTAL FLOOR AREA: 477 sq.ft. (44.3 sq.m.) approx.

Whilst every attempt has been made to ensure the accuracy of the floorplan contained here, measurements of doors, windows, rooms and any other items are approximate and no responsibility is taken for any error, omission or mis-statement. This plan is for illustrative purposes only and should be used as such by any prospective purchaser. The services, systems and appliances shown have not been tested and no guarantee as to their operability or efficiency can be given.  
Made with Metropix ©2026



## AT A GLANCE...



Lounge/diner



Fitted kitchen



Two bedrooms



Refitted shower room



Allocated parking space



## WHAT'S GREAT?

The ideal first time buy or rental investment! This two bedroom mews home is situated close to schools, shops and local amenities and would make a great home for someone new.

In brief the accommodation comprises of an entrance, kitchen, lounge/diner, two bedrooms and a refitted shower room.

Expect to find an allocated parking space directly outside the property for ease with shared green space around the properties.

Call sole selling agents Oscar James Kettering to make arrangements to view.

...expect excellence



# SELLER'S SECRET

As a family living here for over 10 years now we have decided the time is right for us to sell and move on to something a little larger. We have been very happy here over the years and hope the new owners are too.



*Why we like it....*

A great first time buy, popular location also being so close to amenities. Call us to view!

*To buy or not to buy....*

**OSCAR JAMES**

1 Newland Street | Kettering | NN16 8JH  
01536 415777  
[www.oscar-james.com](http://www.oscar-james.com)

---

---

---

---

---