



## Newport Road, Caldicot

4 Bedrooms  
2 Bathrooms  
2 Receptions

£450,000



Nestled in the heart of Caldicot on Newport Road, this substantial detached family home offers an impressive 1,516 square feet of living space, perfect for those seeking comfort and convenience. With four generously sized double bedrooms, this property is ideal for families or those who enjoy having extra space for guests or a home office.

The home boasts two well-appointed bathrooms, ensuring that morning routines run smoothly for everyone. The two spacious reception rooms provide ample room for relaxation, making it easy to host family gatherings or enjoy quiet evenings at home.

Outside, the property features a private driveway with parking for multiple vehicles, a rare find in this area. Additionally, a detached garage offers further storage options or the potential for a workshop. The gardens are generous and well maintained with matured shrubs, plants and trees to the front and the low maintenance rear garden is a perfect spot for family bbqs and enjoying the sunshine.

Positioned centrally in Caldicot, this home enjoys easy access to local amenities and is conveniently located for commuters, with Severn Tunnel Junction train station and the M4 corridor just a short distance away.

This delightful property combines space, comfort, and a prime location, making it an excellent choice for those looking to settle in a spirited community. Don't miss the opportunity to make this wonderful house your new home.



Entrance Hallway  
13'3 x 6'4

Lounge  
25'1 x 11'9

Kitchen  
11'4 x 16'3

Utility  
7'1 x 5'10

Shower Room  
5'5 x 8'5

Bedroom 1  
12'11 x 17'6

Bedroom 2  
13'5 x 10'10

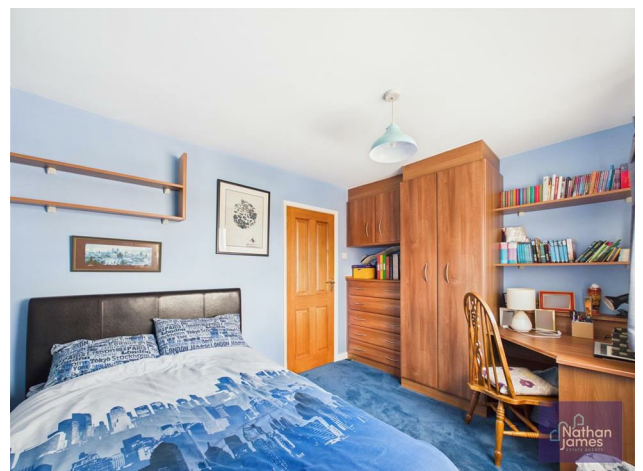
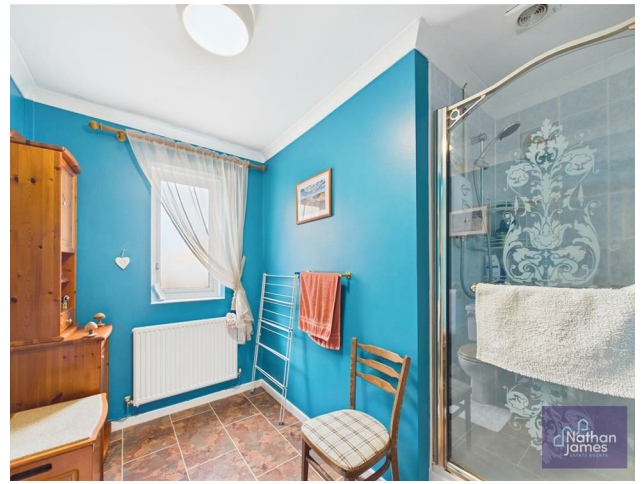
Bedroom 3  
11'1 x 11'9

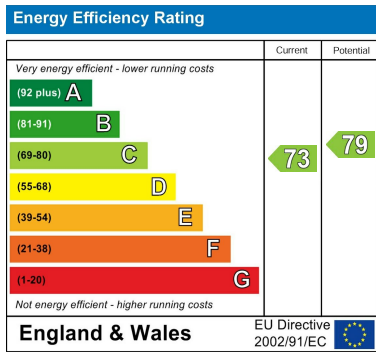
Bedroom 4  
11'3 x 8'11

Landing  
10'1 x 6'5

Bathroom  
5'11 x 6'5

Garage  
9'10 x 19'5





8 Newport Road  
 Caldicot  
 Monmouthshire  
 NP26 4HX  
 01291 421600

nj@nathanjamesestateagents.co.uk  
 nathanjamesestateagents.com