



15 Parkview Close, Exhall

Coventry

Offers in Region of **£195,000**



**SHELDON
BOSLEY
KNIGHT**

LAND AND
PROPERTY
PROFESSIONALS

15 Parkview Close

Exhall, Coventry

Sheldon Bosley Knight are delighted to present this extended three-bedroom home, ideally located in the popular area of Exhall. Perfectly suited to first-time buyers or astute investors, the property enjoys a peaceful position in a quiet residential area with attractive views over open land.

Upon entering, you are welcomed by an inviting entrance hallway leading through to a spacious through lounge. The kitchen opens into the rear extension, which flows seamlessly into the dining area, creating a bright and sociable open-plan space—ideal for modern living, entertaining, or family meals.

To the first floor, the property offers three well-proportioned bedrooms, all featuring wooden flooring that adds warmth and a cosy, homely feel throughout.

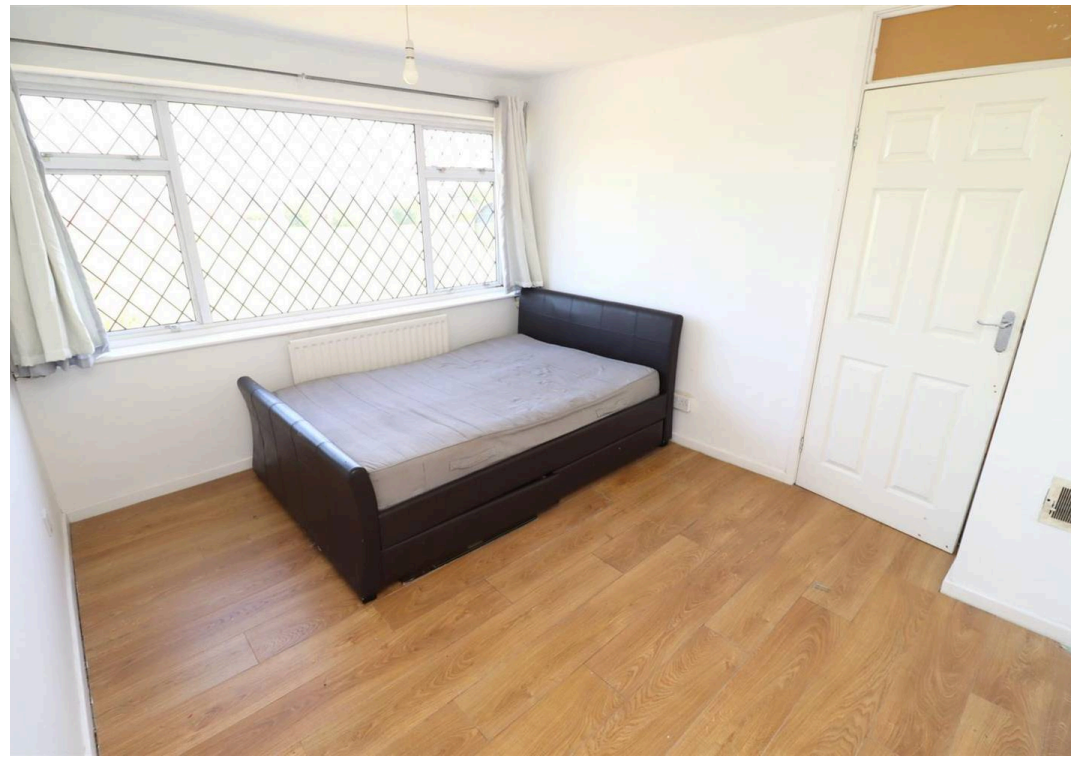
Externally, the rear garden is designed for low-maintenance living, featuring a patio area, shingle, and gated rear access. The garage is conveniently accessed from the rear. To the front, a lawned garden is approached via a pathway and benefits from open views across neighbouring land, giving the home a wonderful sense of space, openness, and connection to nature.

Homes of this quality and position are rarely available and consistently in high demand. Early viewing is highly recommended. Contact our Nuneaton team today to arrange your viewing, or visit www.sheldonbosleyknight.co.uk.

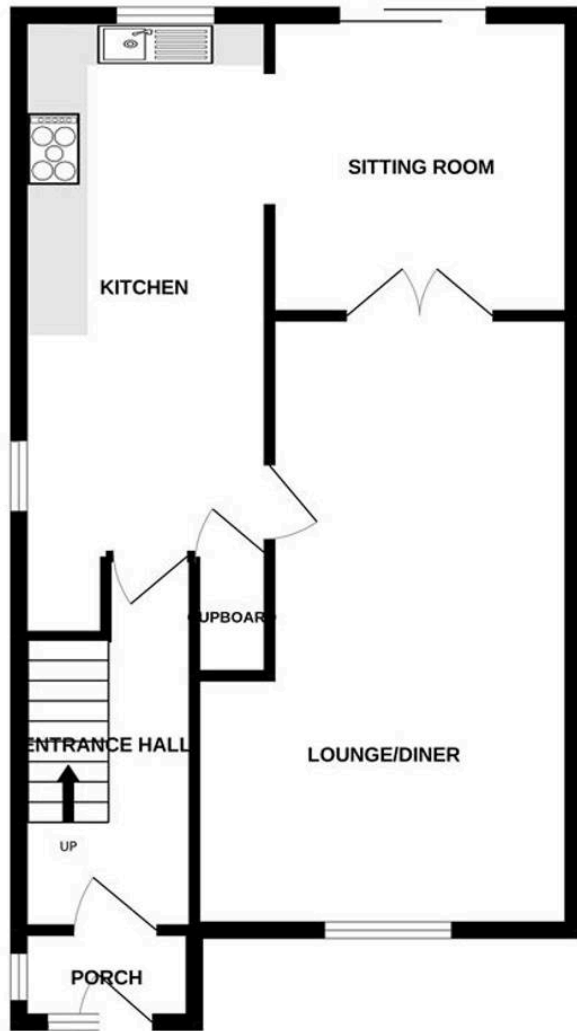
Council Tax band: C

Tenure: Freehold

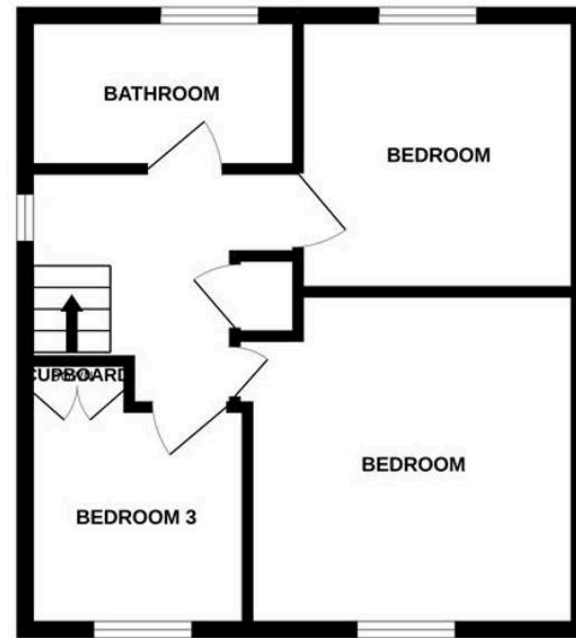




GROUND FLOOR



1ST FLOOR





Sheldon Bosley Knight Nuneaton

Sheldon Bosley Knight, 39 Newdegate Street, Nuneaton - CV11 4ER

02476374949 • nuneaton@sheldonbosleyknight.co.uk • www.sheldonbosleyknight.co.uk/