



Tidnor Rise, Lugwardine, Hereford

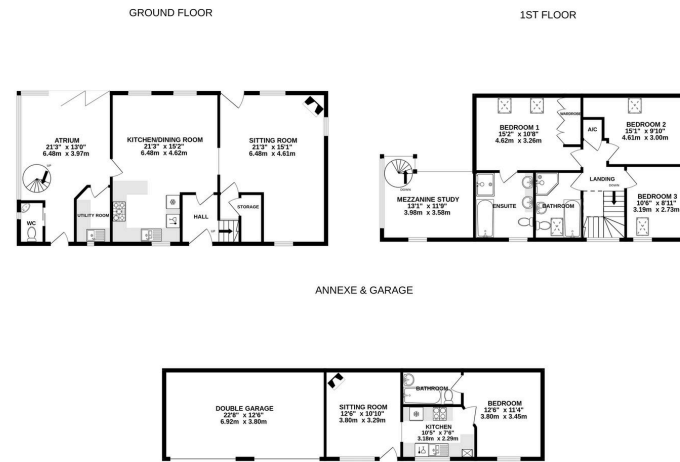
Guide Price £750,000

🛏️ 4 🚿 3 🚗 4



- Detached 3 Bedroom Barn Conversion
- Double Garage & Ample Parking
- Central Courtyard & Private Gated Driveway
- Separate 1 Bedroom Detached Annexe
- Produce Garden With Greenhouse & Raised Beds
- Striking Full-Height Glazed Atrium With Spiral Staircase





TOTAL FLOOR AREA : 2331 sq.ft. (216.6 sq.m.) approx.

Whilst every attempt has been made to ensure the accuracy of the floorplan contained here, measurements of doors, windows, rooms and any other items are approximate and no responsibility is taken for any error, omission or mis-statement. This plan is for illustrative purposes only and should be used as such by any prospective purchaser. The services, systems and appliances shown have not been tested and no guarantee as to their operability or efficiency can be given.

Made with Metropix ©2025

A Striking 3 Bedroom Barn Conversion with Detached 1 Bedroom Annexe, double garage, enclosed courtyard garden and produce garden, all located in the sought-after village of Lugwardine, just outside Hereford.

