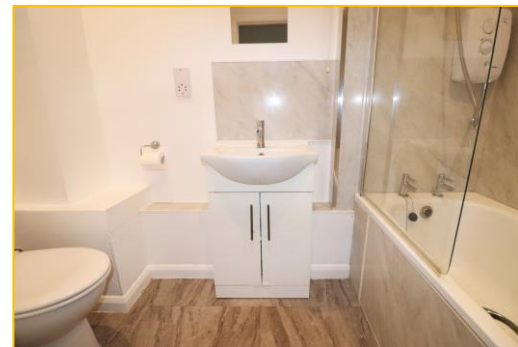




- TOP FLOOR APARTMENT
- EXCELLENT PRESENTATION
- MODERN KITCHEN & BATHROOM
- CENTRAL LOCATION
- VERY CLOSE TO TRANSPORT LINKS
- VIEWS OF SOUTH DOWNS



The Vinery St. Marys Road
Shoreham-By-Sea BN43 5ZA

£199,950

This charming second floor apartment, which is in the heart of central Shoreham is ideally located for local amenities and transportation links. Presented to a very high standard, internal inspection is recommended to fully appreciate the character of this property.

Entrance Hall

Storage cupboard. Electric heater. Entryphone system.

Inner Hallway

Inset ceiling spotlights.

Lounge/Diner 16' 9" x 9' 2" (5.10m x 2.79m)

Double glazed sash style window to the front. Double glazed Velux style window to the side giving distant views. Electric heater.

Kitchen 8' 1" x 6' 0" (2.46m x 1.83m)

Double glazed Velux window to the side. Worktops with inset stainless steel single bowl, single drainer sink unit with mixer tap. Range of base units and drawers with matching wall mounted cupboards. Spaces for a cooker and fridge freezer. Space and plumbing for a washing machine. Inset ceiling spotlights.

Bedroom 13' 5" x 6' 9" (4.09m x 2.06m)

Double glazed sash style window to the front. Fitted double wardrobe. Electric heater. Inset ceiling spot lights.

Bathroom

Enclosed bath with wall mounted shower unit over. Low level WC. Wash hand basin with vanity cupboard below. Airing cupboard. Inset ceiling spot lights.

