



REAL ESTATE

ESTATE AGENCY : REDEFINED



Pleasant Row, Gillingham ME7 5QY

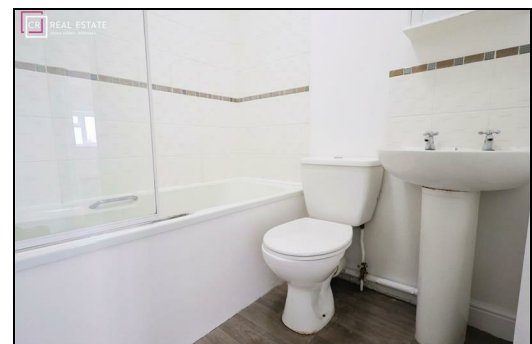
£1,200 Per Calendar Month

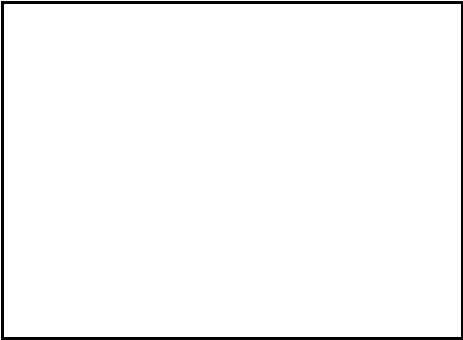
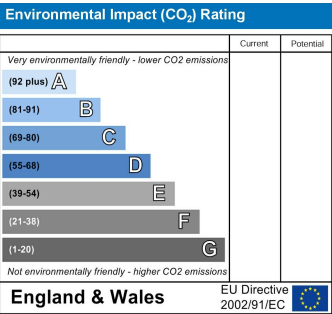
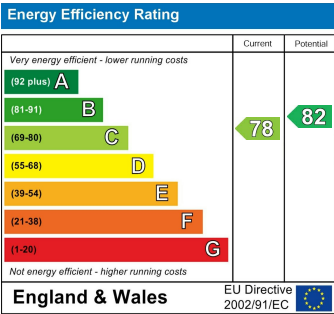
OFFERED WITH THE ZERO DEPOSIT SCHEME. Two bedroom 2nd floor flat available to let. Some refurbishment works have now been completed. The property consists of spacious lounge, kitchen, bathroom, two bedrooms. Situated in the Brompton area, this is a must view without delay.

CR Real Estate are part The Ombudsman Redress Scheme and are a member of the Propertymark Client Money Protection Scheme. Tenant deposits are protected by the Tenancy Deposit Scheme. For more information, please contact us.

Client Money Protection is provided by: Client Money Protect. Scheme Ref: CMP004209

Independent redress is provided by: The Property Ombudsman (TPO). Membership Number: E01687





ESTATE AGENCY : REDEFINED

