



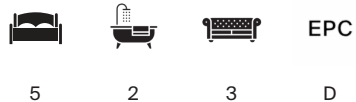
ST JOHNS ROAD

Richmond TW9



CHARMING PERIOD HOME IN RICHMOND

A distinguished Richmond home offering timeless style and
exceptional convenience



Local Authority: London Borough of Richmond Upon Thames

Council Tax band: G

Tenure: Freehold

Guide price: £2,150,000



TIMELESS ELEGANCE & CHARACTER

Positioned on a highly sought-after residential street in the heart of Richmond, this charming period home exudes timeless elegance, combining an abundance of features with tasteful modern updates to create a warm and inviting family residence.

High ceilings and ornate cornicing provide a sense of grandeur, while large sash windows flood the interiors with natural light and further enhance the homes' character. The welcoming entrance hall sets the tone, leading through to a beautifully proportioned reception room, an ideal space for both relaxing and entertaining. At the rear of the ground floor, the well-appointed kitchen offers generous storage and work surfaces, flowing effortlessly into a conservatory garden room to form a sociable and inviting hub, perfectly suited to modern family living and entertaining. A dining area seamlessly connects the ground floor layout.







IMPRESSIVE PRINCIPAL BEDROOM & ENSUITE

Upstairs, the property provides five generously sized bedrooms, each thoughtfully designed to maximise comfort and functionality. The principal bedroom benefits from an en-suite and additional bedrooms are perfectly suited for family, guests, or home office use. A contemporary family bathroom completes the accommodation.

A private rear garden offers a tranquil setting for outdoor dining and relaxation, beautifully framed by mature planting that adds both privacy and charm.

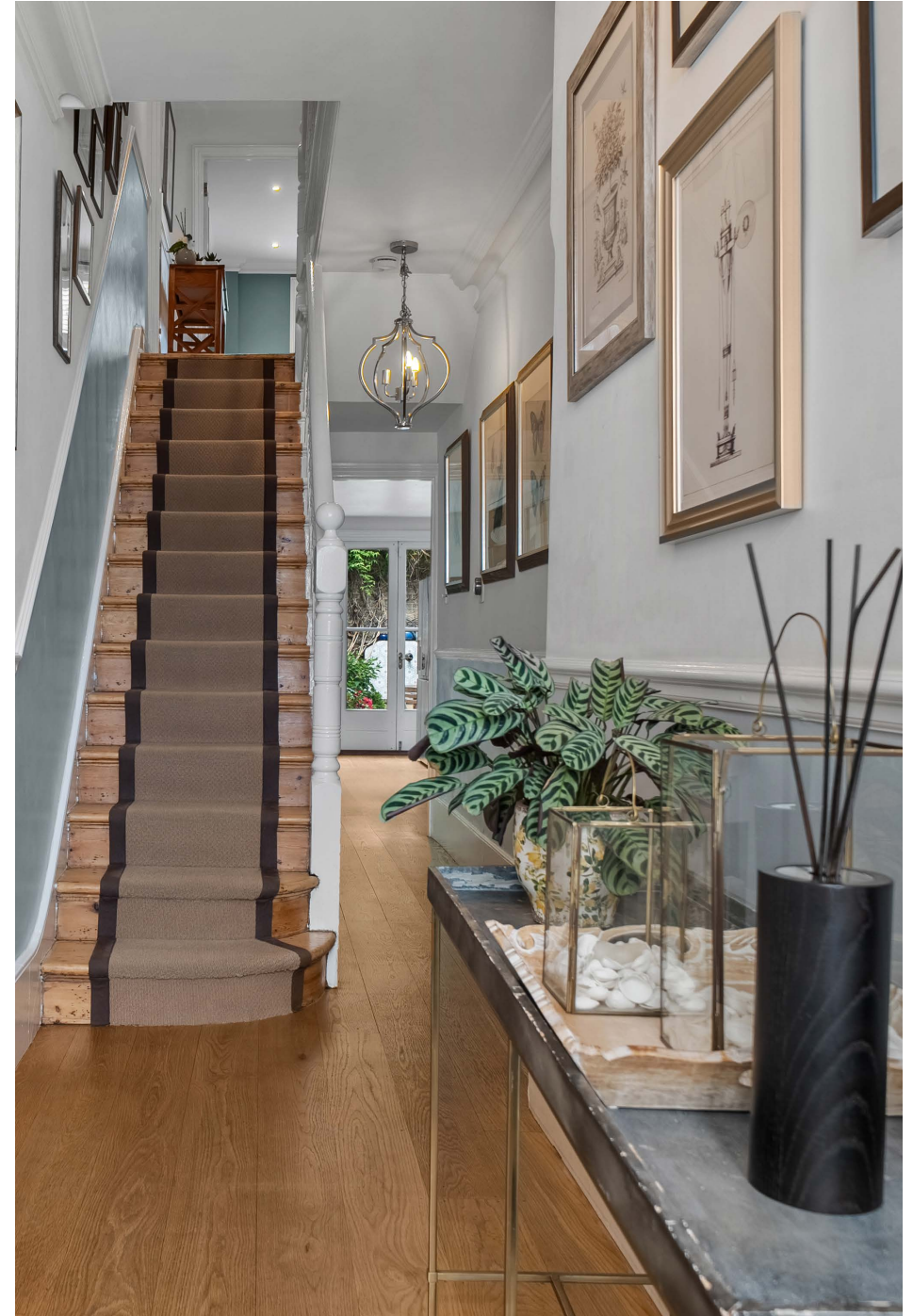




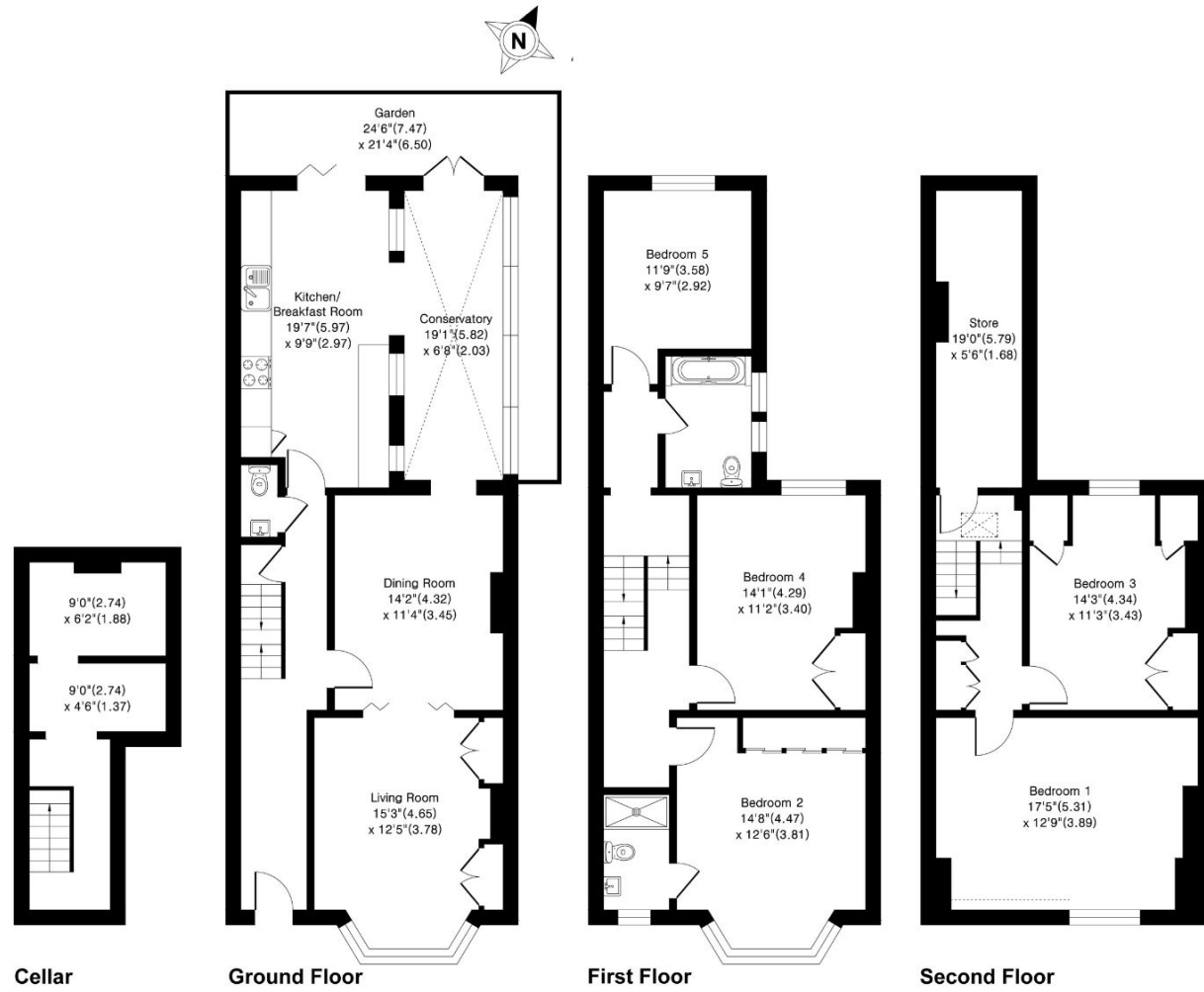


LOCATION

St. John's Road is perfectly positioned for Richmond town centre, renowned for its village feel, boutique shops, cafés, and restaurants. The property is also within easy reach of the River Thames and Richmond Park, offering exceptional outdoor space. Richmond Station provides District Line, Overground, and National Rail services, ensuring excellent connectivity into Central London and beyond.







Approximate Gross Internal Area = 210.7 sq m / 2269 sq ft

This plan is for layout guidance only. Not drawn to scale unless stated. Windows and door openings are approximate. Whilst every care is taken in the preparation of this plan, please check all dimensions, shapes and compass bearings before making any decisions reliant upon them. (ID767266)



William Brown

020 8939 2808

william.brown@knightfrank.com

Knight Frank Richmond

23 Hill Street

Richmond TW9 1SX

[knightfrank.co.uk](https://www.knightfrank.co.uk)

Your partners in property

1. Particulars: These particulars are not an offer or contract, nor part of one. You should not rely on statements given by Knight Frank in the particulars, by word of mouth or in writing ("information") as being factually accurate about the property, its condition or its value. Neither Knight Frank nor any joint agent has any authority to make any representations about the property, and accordingly any information given is entirely without responsibility on the part of Knight Frank. 2. Material Information: Please note that the material information is provided to Knight Frank by third parties and is provided here as a guide only. While Knight Frank has taken steps to verify this information, we advise you to confirm the details of any such material information prior to any offer being submitted. If we are informed of changes to this information by the seller or another third party, we will use reasonable endeavours to update this as soon as practical. 3. Photos, Videos etc: The photographs, property videos and virtual viewings etc. show only certain parts of the property as they appeared at the time they were taken. Areas, measurements and distances given are approximate only. 4. Regulations etc: Any reference to alterations to, or use of, any part of the property does not mean that any necessary planning, building regulations or other consent has been obtained. A buyer must find out by inspection or in other ways that these matters have been properly dealt with and that all information is correct. 5. Fixtures and fittings: A list of the fitted carpets, curtains, light fittings and other items fixed to the property which are included in the sale (or may be available by separate negotiation) will be provided by the Seller's Solicitors. 6. VAT: The VAT position relating to the property may change without notice. 7. To find out how we process Personal Data, please refer to our Group Privacy Statement and other notices at <https://www.knightfrank.com/legals/privacy-statement>.

Particulars dated May 2026. Photographs and videos dated May 2026 All information is correct at the time of going to print. Knight Frank is the trading name of Knight Frank LLP. Knight Frank LLP is a limited liability partnership registered in England and Wales with registered number OC305934. Our registered office is at 55 Baker Street, London W1U 8AN. We use the term 'partner' to refer to a member of Knight Frank LLP, or an employee or consultant. A list of members names of Knight Frank LLP may be inspected at our registered office. If you do not want us to contact you further about our services then please contact us by either calling 020 3544 0692, email to marketing.help@knightfrank.com or post to our UK Residential Marketing Manager at our registered office (above) providing your name and address.

