



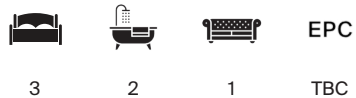
## MORETON HOUSE

Hampstead, NW3



## WONDERFUL PERIOD FLAT IN PRIME HAMPSTEAD VILLAGE LOCATION

Situated on a quiet lane in Hampstead village, a unique three bedroom raised ground and first floor garden apartment, forming part of a Grade II listed neo-Gothic mansion.



Local Authority: London Borough of Camden

Council Tax band: G

Tenure: Share of freehold, plus leasehold, approximately 996 years remaining

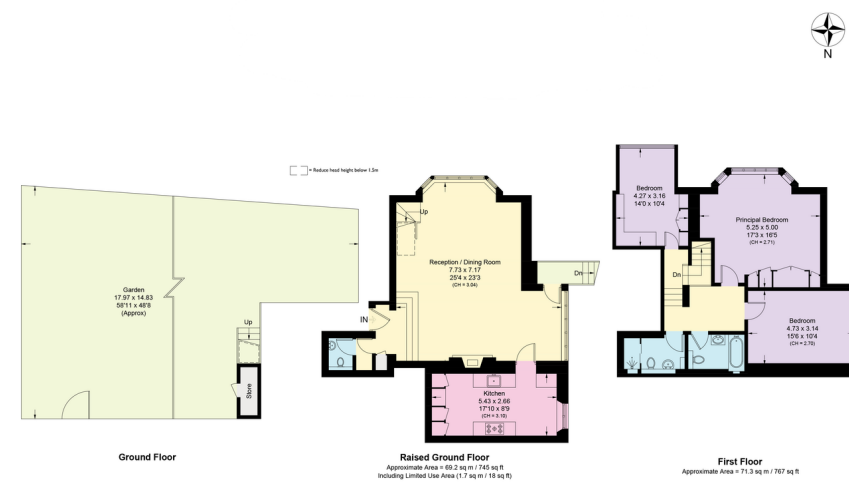
Service charge: £7,000 per annum\*

**Guide Price: £2,500,000**

Designed in 1896 by the esteemed architect Thomas Garner, Moreton House is rich in period detail. The magnificent 26' 5" by 22' 7" reception room features exquisite wood panelling, stone mullions and leaded windows, intricate ceiling plasterwork, and a grand fireplace, while providing direct access to a mature private garden. Holly Walk, a tranquil, often traffic-free lane just three minutes walk from Hampstead tube station, further contributes to a rare sense of peaceful seclusion.

The first floor features a spacious, southwest-facing principal bedroom with a bay window and far-reaching views, two further well-proportioned bedrooms and two immaculate bathrooms. Extending to 1,534 sq ft, the apartment has the huge benefit of off-street parking for two cars. The lease is approximately 996 years and there is a share of the freehold.

\*Please note that we have not been able to confirm the amount or timing of the next service charge review. We recommend that you or your advisors make independent inquiries. Additionally, the service charge given does not include any provision for major works.



Approximate Gross Internal Area = 142.5 sq m / 1,534 sq ft

This plan is for layout guidance only. Not drawn to scale unless stated. Windows and door openings are approximate. Whilst every care is taken in the preparation of this plan, please check all dimensions, shapes and compass bearings before making any decisions reliant upon them. (ID767266)



We would be delighted  
to tell you more.

Nathan White  
+44 20 3833 9813  
nathan.white@knightfrank.com

Knight Frank Hampstead  
58-62 Heath Street  
London NW3 1EN

[knightfrank.co.uk](https://www.knightfrank.co.uk)

Your partners in property

1. Particulars: These particulars are not an offer or contract, nor part of one. You should not rely on statements given by Knight Frank in the particulars, by word of mouth or in writing ("information") as being factually accurate about the property, its condition or its value. Neither Knight Frank nor any joint agent has any authority to make any representations about the property, and accordingly any information given is entirely without responsibility on the part of Knight Frank. 2. Material Information: Please note that the material information is provided to Knight Frank by third parties and is provided here as a guide only. While Knight Frank has taken steps to verify this information, we advise you to confirm the details of any such material information prior to any offer being submitted. If we are informed of changes to this information by the seller or another third party, we will use reasonable endeavours to update this as soon as practical. 3. Photos, Videos etc: The photographs, property videos and virtual viewings etc. show only certain parts of the property as they appeared at the time they were taken. Areas, measurements and distances given are approximate only. 4. Regulations etc: Any reference to alterations to, or use of, any part of the property does not mean that any necessary planning, building regulations or other consent has been obtained. A buyer must find out by inspection or in other ways that these matters have been properly dealt with and that all information is correct. 5. Fixtures and fittings: A list of the fitted carpets, curtains, light fittings and other items fixed to the property which are included in the sale (or may be available by separate negotiation) will be provided by the Seller's Solicitors. 6. VAT: The VAT position relating to the property may change without notice. 7. To find out how we process Personal Data, please refer to our Group Privacy Statement and other notices at <https://www.knightfrank.com/legals/privacy-statement>.

Particulars dated May 2025. Photographs and videos dated May 2025. All information is correct at the time of going to print. Knight Frank is the trading name of Knight Frank LLP. Knight Frank LLP is a limited liability partnership registered in England and Wales with registered number OC305934. Our registered office is at 55 Baker Street, London W1U 8AN. We use the term 'partner' to refer to a member of Knight Frank LLP, or an employee or consultant. A list of members names of Knight Frank LLP may be inspected at our registered office. If you do not want us to contact you further about our services then please contact us by either calling 020 3544 0692, email to [marketing.help@knightfrank.com](mailto:marketing.help@knightfrank.com) or post to our UK Residential Marketing Manager at our registered office (above) providing your name and address.