



 **6**
Bedrooms

 **2**
Bathrooms



This spacious end terrace property offers six bedrooms, two bathrooms, and a reception room. Located in a popular area, the home features a modern kitchen, a well-maintained garden, and off-street parking. Freehold and with no onward chain, this property is ideal for those seeking ample living space.

Situated on Cecil Avenue in Wembley, this six-bedroom end terrace property provides a generous living space with two bathrooms and a reception room. The property is freehold and offered with no onward chain, making it an attractive option for buyers looking for a straightforward purchase.

The ground floor features a welcoming reception room that leads to a modern kitchen equipped with essential appliances, including a gas hob, oven, and washing machine. The kitchen opens to a private garden, perfect for outdoor dining and relaxation. The garden is well-maintained, offering a secluded space.

Upstairs, the property boasts four well-proportioned bedrooms, each designed to maximize space and light. The bedrooms are complemented by two contemporary bathrooms, both fitted with bathtubs and showers, ensuring convenience for a large household.

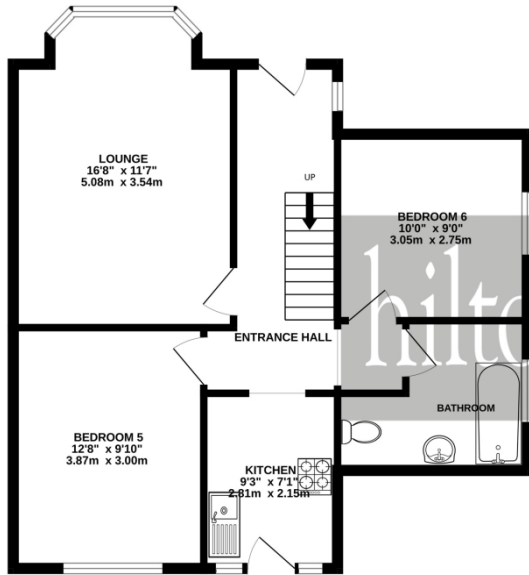
The property's location in Wembley is popular for its accessibility to local amenities and transport links. Wembley offers a variety of shops, restaurants, and entertainment options, making it a vibrant place to live. The area is well-served by public transport, with Wembley Park and Wembley Central stations providing easy access to central London.

The property benefits from off-street parking, adding to the convenience for residents with vehicles. The spacious layout and multiple bedrooms make this home suitable for families or those needing extra space for guests or home offices.

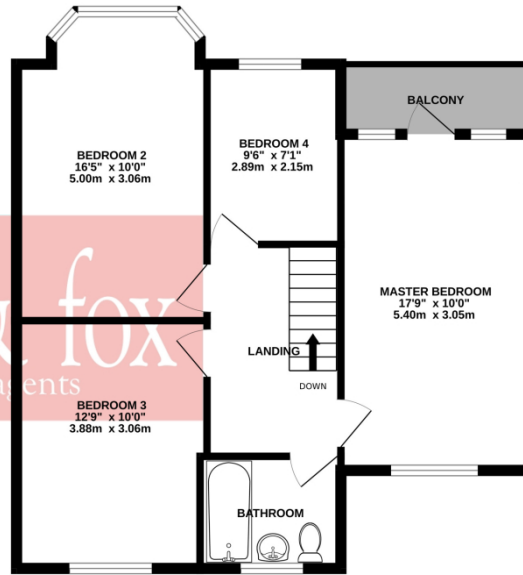
Energy Performance Certificate (EPC) details are available upon request, ensuring the property meets energy efficiency standards.

Overall, this end terrace home on Cecil Avenue offers a substantial living space in a desirable location, with the added benefits of being freehold and chain-free.

GROUND FLOOR
652 sq.ft. (60.6 sq.m.) approx.



1ST FLOOR
652 sq.ft. (60.6 sq.m.) approx.



TOTAL FLOOR AREA : 1304 sq.ft. (121.2 sq.m.) approx.

Whilst every attempt has been made to ensure the accuracy of the floorplan contained here, measurements of doors, windows, rooms and any other items are approximate and no responsibility is taken for any error, omission or mis-statement. This plan is for illustrative purposes only and should be used as such by any prospective purchaser. The services, systems and appliances shown have not been tested and no guarantee as to their operability or efficiency can be given.
Made with Metropix ©2026





VII Park

Wembley

Wembley Stadium

South Way

South Way

Wembley Stadium

The Arch Wembley

Wembley Central

Cecil Ave

Harrow Rd

A404

St. Michaels Ave

Middlesex Manor
Care Home - Bupa

TRADER Wembley

Tokyngton Ave

Hillfield Ave

Ealing R