



Westward Road, Ebley GL5 4ST

£100,000



Westward Road, Ebley GL5 4ST

- Over 55s maisonette conveniently located with additional benefit of pets allowed and private entrance
- First floor with uninterrupted views across Selsley Common
- One double bedroom with storage and one single bedroom overlooking Victory Park

£100,000

Entrance Hall

uPVC double-glazed door to entrance, access to hallway with stairs rising to the first floor. Storage cupboard.

Landing

Access to all accommodation and storage cupboard. Radiator.

Living Room/Diner

uPVC double-glazed window to front elevation. Access to kitchen. Radiator.

Kitchen

uPVC double-glazed window to rear elevation. Range of wall and base units with stainless steel sink with mixer tap and drainer, freestanding cooker with four ring electric hob, washing machine and fridge/freezer.

Bedroom One

uPVC double-glazed window to front elevation. Storage units and cupboard. Radiator.

Bedroom Two

uPVC double-glazed window to rear elevation.

Bathroom

uPVC double-glazed window to rear elevation. Low-level WC, wash hand basin and bath with shower over. Airing cupboard. Radiator.

Outside

There is a communal car park for the residents of Westward Court, these are on a first come first serve basis. There is also communal lawned areas. The front of the property has views across Selsley common and the rear overlooks Victory Park, there is private gate access to Victory Park from Westward Court.

Location

Conveniently located in between Stroud and Stonehouse in Cainscross, the property is on the doorstep of the Ebley Wharf development offering a great atmosphere, plus a Gym, coffee shop/wine bar, hair salon, barbers' shop and stunning canal and countryside walks. St Matthew's Primary School and Foxmoor Primary School are easily accessible. Stroud provides excellent shopping facilities, a high standard of education with a good variety of state, grammar and private schools in the immediate vicinity as well as a wide range of recreational facilities with a leisure centre in Stroud. This



Regent House, 1 Bath Road, Stonehouse, GL10 2JD

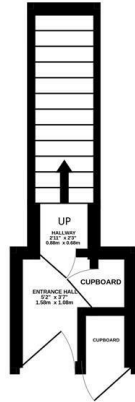
01453 827640

stonehouse@naylorpowell.com

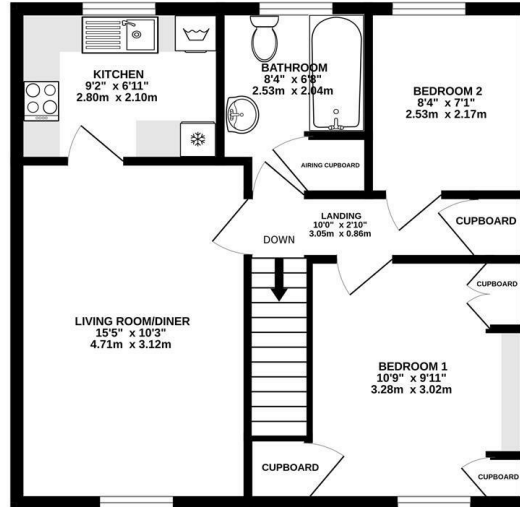
www.naylorpowell.com



GROUND FLOOR
 27' 4 1/2" (8.34m) approx.



1ST FLOOR
 61'3" x 46' (18.71m x 13.71m) approx.



TOTAL FLOOR AREA: 570 sq.ft. (52.9 sq.m.) approx.

Whilst every attempt has been made to ensure the accuracy of the floorplan contained here, measurements of doors, windows, rooms and any other items are approximate and no responsibility is taken for any error, omission or mis-statement. This plan is for illustrative purposes only and should be used as such by any prospective purchaser. The services, systems and appliances shown have not been tested and no guarantee as to their operability or efficiency can be given.
 Made with Metropix C2025

Disclaimer: These particulars do not form part of any contract and no responsibility is accepted for any errors or omissions in any statement made, whether verbally or written for or on behalf of Naylor Powell.

Floorplans have been prepared for identification purposes only, they are not to scale and no guarantee can be given as to their accuracy.

Prospective purchasers please be aware none of the appliances, boiler, heaters etc. which may have been mentioned in these particulars have been tested and no guarantee can be given that they are in working order. Prospective purchasers should arrange for such items to be tested at their own expense.

