



MORETON TERRACE
PIMLICO

JACKSON-STOPS 

MORETON TERRACE PIMLICO, SW1V

ASKING PRICE: £634 PER WEEK

A beautifully presented first floor flat in the Moreton Triangle.

Benefiting from two bedrooms, two bathrooms, an open plan kitchen/reception and a balcony. Just 0.3 miles from Pimlico Underground Station, 0.6 miles from Victoria Station, 0.8 miles from Vauxhall Station and 0.9 miles from Battersea Park.



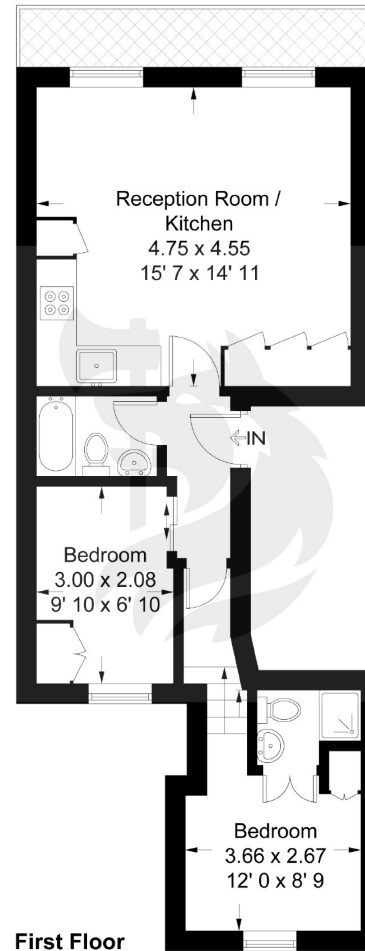
KEY FEATURES

- Two Bedrooms
- Two Bathrooms
- Kitchen
- Reception
- Balcony
- Tax Band: E



Moreton Terrace

Approximate Gross Internal Area = 479 sq ft / 44.5 sq m



Not to scale, for guidance only and must not be relied upon as a statement of fact
All measurements and areas are approximate only and have been prepared in
accordance with the current edition of the RICS Code of Measuring Practice

Energy Rating: C. We aim to make our particulars both accurate and reliable. However they are not guaranteed; nor do they form part of an offer or contract. If you require clarification on any points then please contact us, especially if you are travelling some distance to view. Please note that appliances and heating systems have not been tested and therefore no warranties can be given as to their good working order.

ASKING PRICE: £634 PER WEEK

PIMLICO

020 7828 4243

pimlicolettings@jackson-stops.com

jackson-stops.co.uk

JACKSON-STOPS