



Connells

Dartmouth Drive
Broughton Milton Keynes



Property Description

Nestled in the sought after Broughton area of Milton Keynes, this modern three bedroom semi-detached offers a fantastic opportunity for first time buyers and growing families. As you enter you are greeted by a bright and airy living space, tastefully decorated with neutral tones that amplify the natural light. A well equipped kitchen fitted with sleek cabinetry, the setup is perfect for entertaining guests and enjoying family meals. Upstairs you'll find three well proportioned bedrooms each offering a peaceful retreat and additional a family bathroom. Outside the property boasts a private garden with side gate access to the car port. Viewing is highly recommended.

Cloakroom

Fitted with a low-level WC and wash hand basin (WHB), incorporating a radiator and extractor fan for ventilation.

Lounge

Featuring two double-glazed windows allowing ample natural light, complemented by a radiator for comfortable heating.

Kitchen

Fitted with a radiator and contemporary spotlights, the kitchen offers a range of fitted wall and base units with integrated oven and extractor. Appliances include a dishwasher and fridge/freezer, complemented by a stainless-steel sink. French doors open directly onto the rear garden, providing excellent natural light and access outdoors.

Utility Room

Providing a stainless-steel sink and radiator, with space and plumbing for a washing machine. A door offers direct access to the garden, adding practicality and convenience.

Landing

Offering a Juliet balcony allowing natural light, together with a radiator and a loft access hatch.

Bedroom One

Featuring a double-glazed window, radiator, and a fitted wardrobe providing useful storage.

En-Suite

Comprising a low-level WC, wash hand basin (WHB), and a shower enclosure.

Bedroom Two

Comprising a double-glazed window and radiator.

Bedroom Three

Featuring a double-glazed window and radiator.

Bathroom

Comprising a bath, low-level WC, wash hand basin (WHB), radiator, and a double-glazed window providing natural light and ventilation.

Rear Garden

Mainly laid to lawn with a small patio seating area, complemented by side gate access for added convenience.

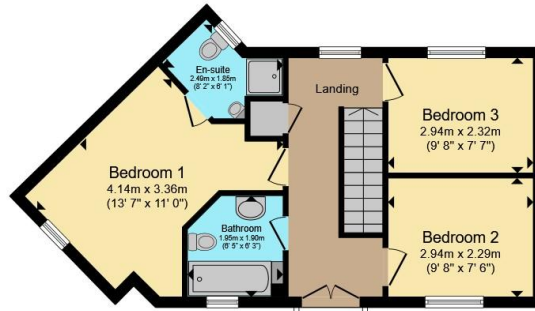
Parking

Driveway parking with the added benefit of a car port, providing covered off-road parking.





Ground Floor



First Floor

Total floor area 90.1 m² (970 sq.ft.) approx

This floor plan is for illustrative purposes only. It is not drawn to scale. Any measurements, floor areas (including any total floor area), openings and orientation are approximate. No details are guaranteed, they cannot be relied upon for any purpose and they do not form part of any agreement. No liability is taken for any error, omission or misstatement. A party must rely upon its own inspection(s). Powered by www.propertybox.io



To view this property please contact Connells on

T 01908 691606

E walnuttree@connells.co.uk

26A Fyfield Barrow The Walnut Tree Local Centre Walnut Tree

EPC Rating: B Council Tax Band: C

view this property online connells.co.uk/Property/WNT307926

Tenure: Freehold



1. MONEY LAUNDERING REGULATIONS Intending purchasers will be asked to produce identification documentation at a later stage and we would ask for your co-operation in order that there will be no delay in agreeing the sale. 2. These particulars do not constitute part or all of an offer or contract. 3. The measurements indicated are supplied for guidance only and as such must be considered incorrect. Potential buyers are advised to recheck measurements before committing to any expense. 4. We have not tested any apparatus, equipment, fixtures, fittings or services and it is in the buyers interest to check the working condition of any appliances.

Connells Residential is registered in England and Wales under company number 1489613, Registered Office is Cumbria House, 16-20 Hockliffe Street, Leighton Buzzard, Bedfordshire, LU7 1GN. VAT Registration Number is 500 2481 05.

See all our properties at www.connells.co.uk | www.rightmove.co.uk | www.zoopla.co.uk

Property Ref: WNT307926 - 0002