



**Whitehall Landing, Whitby, YO22**

Guide Price **£345,000**

**Hendersons.**  
Estate & Letting Agents



Substantial four-bedroom townhouse offering over 1,500 sq.ft. of flexible accommodation, garage, driveway and allocated parking, all within walking distance of Whitby's harbour and town centre. An ideal permanent family home or coastal retreat.

Occupying an enviable position within the highly regarded Whitehall Landing development, this substantial four-bedroom townhouse offers over 1,500 sq.ft. of beautifully balanced accommodation, combining generous proportions with an exceptionally practical layout. With a garage, driveway, allocated parking and private courtyard, it presents a rare opportunity to secure a permanent home within easy walking distance of Whitby's historic harbour and town centre.

Arranged across three floors, the accommodation has been thoughtfully designed to suit the demands of modern family life. The flexibility on offer is immediately apparent, with a ground floor double bedroom and cloakroom creating the perfect space for visiting guests, independent teenagers, multi-generational living or a dedicated home office.

The first floor forms the social heart of the home, where an impressive kitchen and dining room provides an excellent entertaining space with ample room for family meals and informal gatherings. Separate from the kitchen, the spacious lounge offers a relaxing retreat, creating the ideal balance between open, sociable living and quieter spaces to unwind.

The upper floor continues to impress with three further bedrooms, including a generous principal bedroom complete with en-suite shower room, whilst the remaining bedrooms are served by a contemporary family bathroom.

Outside, the property enjoys a private, low-maintenance courtyard, ideal for outdoor dining or relaxing in the warmer months. Practicality is further enhanced by the integral garage, private driveway and additional allocated parking—a combination rarely found so close to Whitby's town centre.

Whether you're searching for a spacious family home, somewhere to enjoy retirement by the coast, or a property offering flexible accommodation for changing family needs, this home effortlessly adapts to a variety of lifestyles. Its generous proportions, excellent parking and highly desirable location make it an increasingly rare find in today's market.

Situated within one of Whitby's most sought-after residential developments, Whitehall Landing places the marina, supermarkets, restaurants, cafés, schools and the historic town centre all within comfortable walking distance, allowing you to enjoy the very best of coastal living without compromising on everyday convenience.

**Bedrooms:** 4 | **Bathrooms:** 2 | **Receptions:** 1

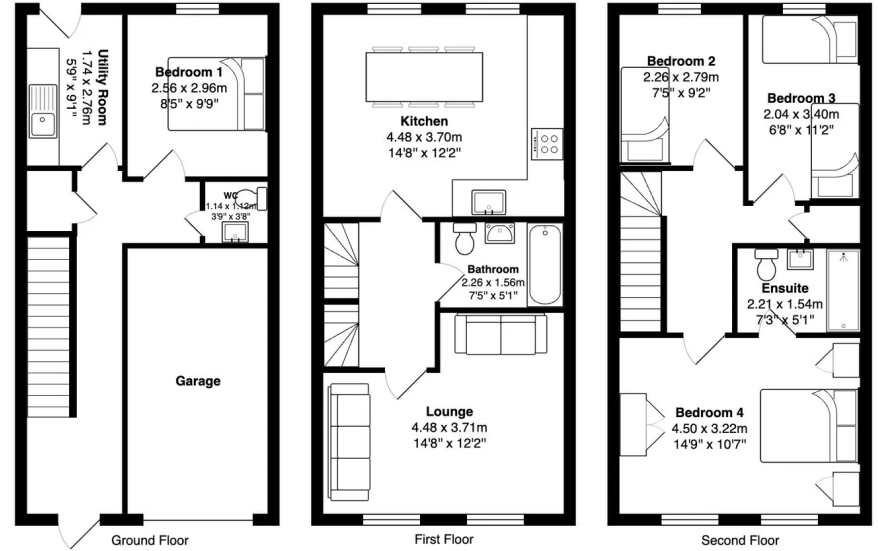
**Tenure:** Freehold

CLOSE DOOR  
FIRMLY









## Hendersons Estate Agents

22-23 Flowergate Whitby North Yorkshire YO21 3BA

01947 602626

hello@myhendersons.co.uk

https://myhendersons.co.uk/

**Hendersons.**  
Estate & Letting Agents

**Disclaimer**

These particulars are intended to give a fair and accurate description of the property, but their accuracy cannot be guaranteed and they do not constitute an offer or contract. All descriptions, dimensions, references to condition, fixtures and fittings, services, council tax, tenure, or any other details are given in good faith but should not be relied upon as statements of fact. Any interested parties must satisfy themselves by inspection or otherwise as to the correctness of each of the statements contained herein.