



Hadlow Road, Tonbridge TN9

Guide Price £765,000 – £800,000

est. 1828
bracketts



This elegant Victorian semi-detached family home occupies a highly sought-after central location and has been thoughtfully modernised throughout. It beautifully combines period charm with contemporary living, offering both style and practicality. The property is conveniently situated approximately 0.9 miles from the mainline station, providing direct links to London in under 33 minutes, and is within easy reach of the High Street, reputable primary schools, and the highly regarded Boys' and Girls' Grammar schools. Immaculately presented, the accommodation is arranged over three floors and finished to an exceptional standard. The ground floor features a welcoming entrance hall with decorative terracotta tiled flooring, a cloakroom/WC, and a charming sitting room complete with a gas fireplace and attractive bay window. There is also a separate dining room/playroom, offering flexible living space. To the rear, a thoughtfully designed Edwardian rear extension (1911) creates a stunning open-plan kitchen/breakfast room overlooking the garden, fitted with high-quality units and ample integrated storage. The first floor comprises three well-proportioned bedrooms and a modern family bathroom. The second floor offers two additional bedrooms and a stylish shower room, ideal for growing families or guest accommodation. Externally, the property benefits from a beautifully established rear garden, mainly laid to lawn and complemented by mature shrubs, trees, and well-stocked borders. A patio seating area and a covered pergola with hot tub (available by separate negotiation) provide excellent outdoor entertaining space. To the front, there is off-street parking for two vehicles. Early viewing is highly recommended to fully appreciate this exceptional home.

Council Tax band: E Tenure: Freehold





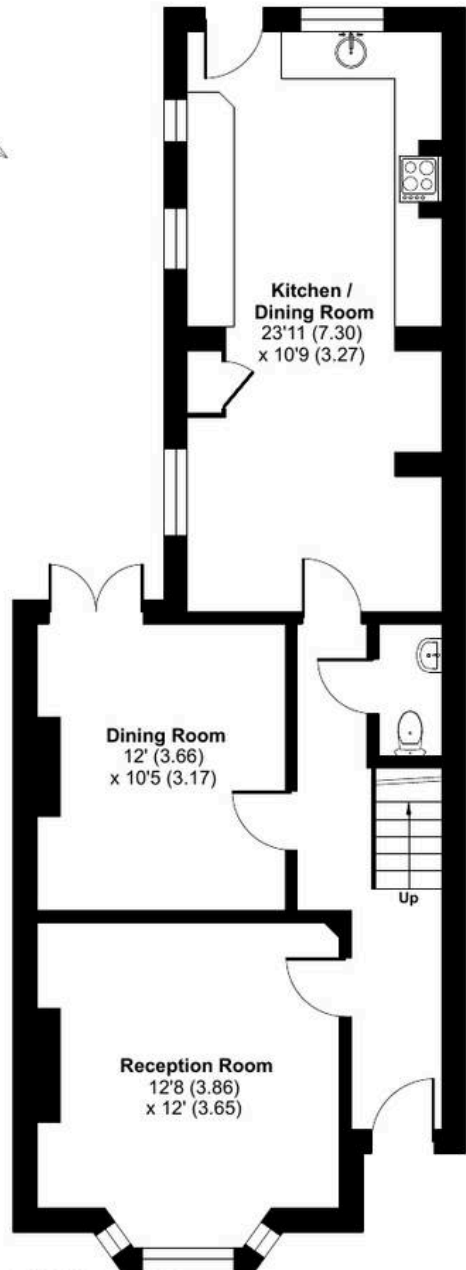
Hadlow Road, Tonbridge, TN9

Approximate Area = 1742 sq ft / 161.8 sq m

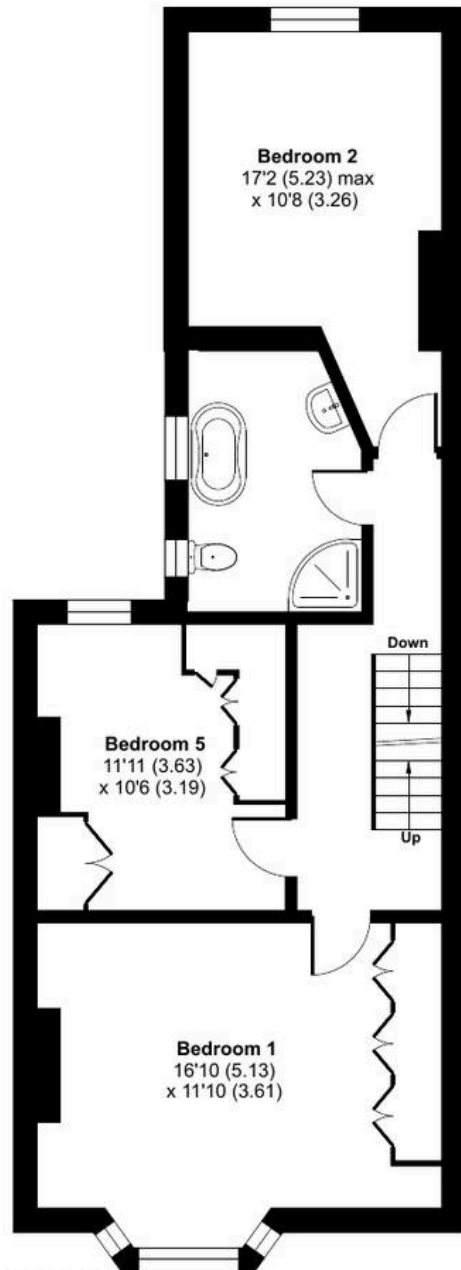
Limited Use Area(s) = 31 sq ft / 2.8 sq m

Total = 1773 sq ft / 164.6 sq m

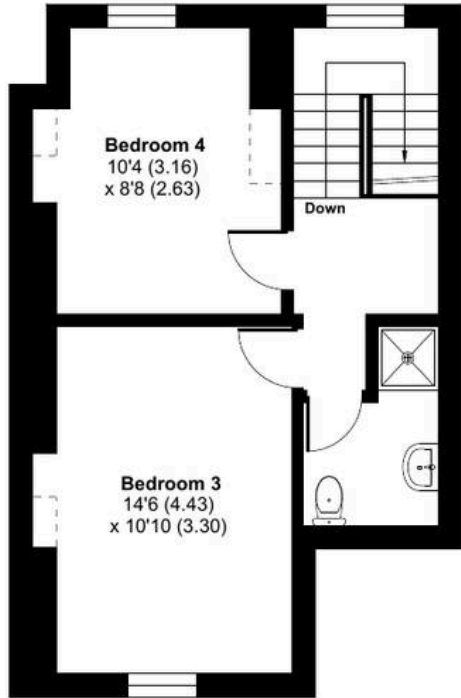
For identification only - Not to scale



GROUND FLOOR



FIRST FLOOR



SECOND FLOOR

Denotes restricted head height