



**Gardiner Court, Blue Bridge Milton Keynes MK13 0LR**



**welcome to**

**Gardiner Court, Blue Bridge Milton Keynes**

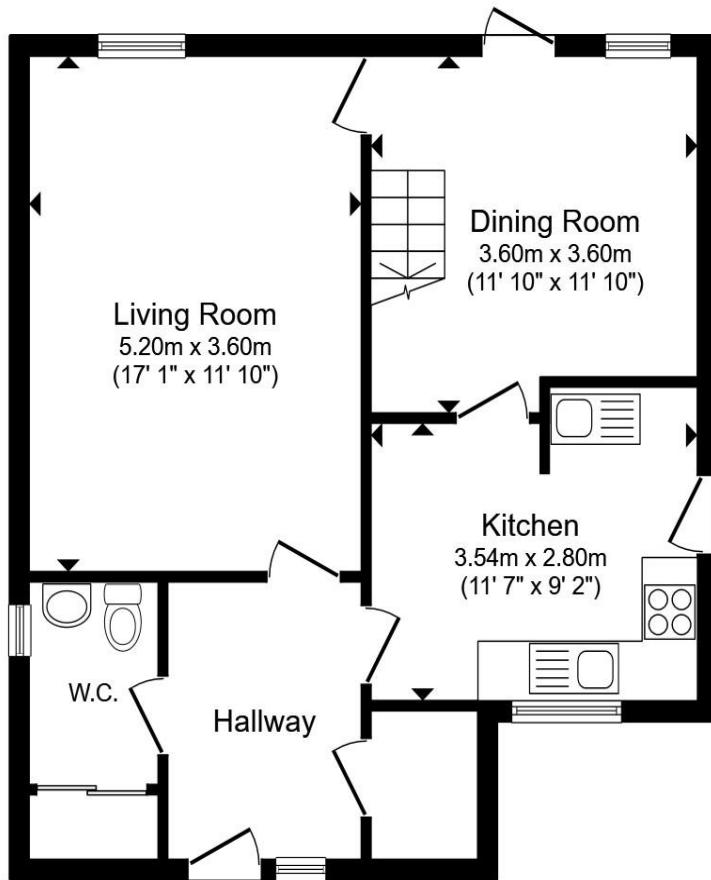
GUIDE PRICE £475,000 - £500,000

Welcome to this impressive four-bedroom detached property located in the desirable Blue Bridge area of Milton Keynes. An ideal choice for families and professionals alike, this detached property is a perfect blend of comfort and convenience.

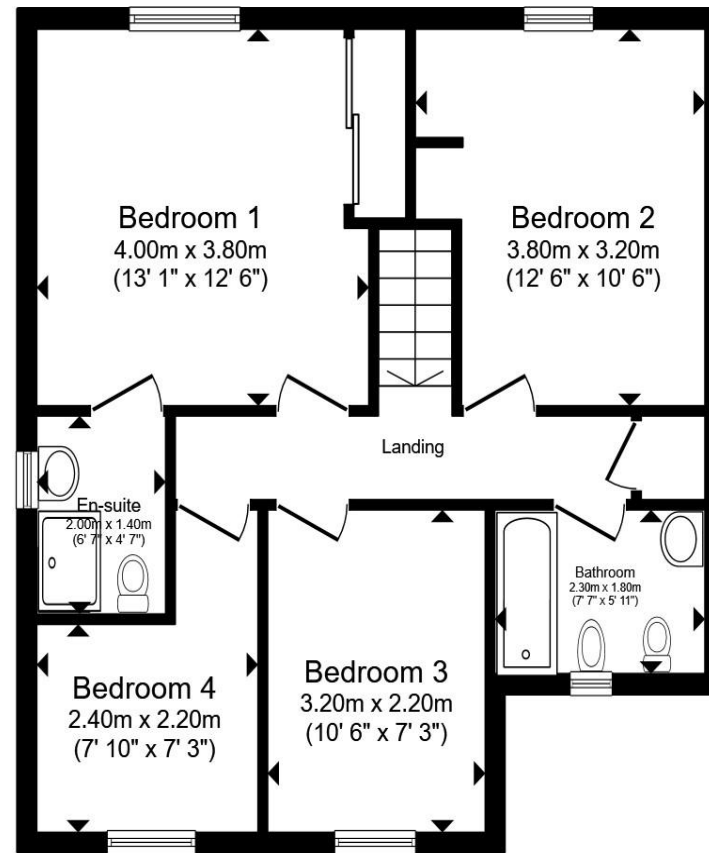


Agents Note:

Agents Note:



Ground Floor



First Floor

Total floor area 109.6 m<sup>2</sup> (1,180 sq.ft.) approx

This floor plan is for illustrative purposes only. It is not drawn to scale. Any measurements, floor areas (including any total floor area), openings and orientation are approximate. No details are guaranteed, they cannot be relied upon for any purpose and they do not form part of any agreement. No liability is taken for any error, omission or misstatement. A party must rely upon its own inspection(s). Powered by [www.propertybox.io](http://www.propertybox.io)



welcome to

## Gardiner Court, Blue Bridge Milton Keynes

- FOUR DETACHED
- EN-SUITE TO MASTER BEDROOM
- DRIVEWAY AND GARAGE
- CLOAKROOM
- TWO RECEPTION ROOMS

Tenure: Freehold EPC Rating: C

Council Tax Band: D

guide price

**£475,000**



Please note the marker reflects the postcode not the actual property

**view this property online** [brownandmerry.co.uk/Property/STS108420](https://www.brownandmerry.co.uk/Property/STS108420)



Property Ref:  
STS108420 - 0007

1. MONEY LAUNDERING REGULATIONS Intending purchasers will be asked to produce identification documentation at a later stage and we would ask for your co-operation in order that there is no delay in agreeing the sale. 2. These particulars do not constitute part or all of an offer or contract. 3. The measurements indicated are supplied for guidance only and as such must be considered incorrect. Potential buyers are advised to recheck measurements before committing to any expense. 4. We have not tested any apparatus, equipment, fixtures or services and it is in the buyers interest to check the working condition of any appliances. 5. Where an EPC, or a Home Report (Scotland only) is held for this property, it is available for inspection at the branch by appointment. If you require a printed version of a Home Report, you will need to pay a reasonable production charge reflecting printing and other costs. 6. We are not able to offer an opinion either written or verbal on the content of these reports and this must be obtained from your legal representative. 7. Whilst we take care in preparing these reports, a buyer should ensure that his/her legal representative confirms as soon as possible all matters relating to title including the extent and boundaries of the property and other important matters before exchange of contracts.

  
brown & merry



**01908 562011**



[stonystatford@brownandmerry.co.uk](mailto:stonystatford@brownandmerry.co.uk)



65 High Street, MILTON KEYNES,  
Buckinghamshire, MK11 1AY



**[brownandmerry.co.uk](https://www.brownandmerry.co.uk)**