

**3 Bed
House
located in Woodingdean**

 **MyHausProperty**
Sales & Lettings

1 Grove Mews

Woodingdean

Brighton

BN2 6RN



Asking Price £750,000

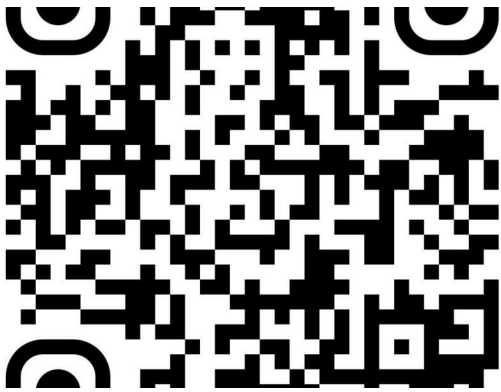
Tucked quietly away at the foot of the South Downs, Grove Mews is a collection of architecturally striking eco homes that feel a world away from the city, yet remain close to both the Downs and the seafront.

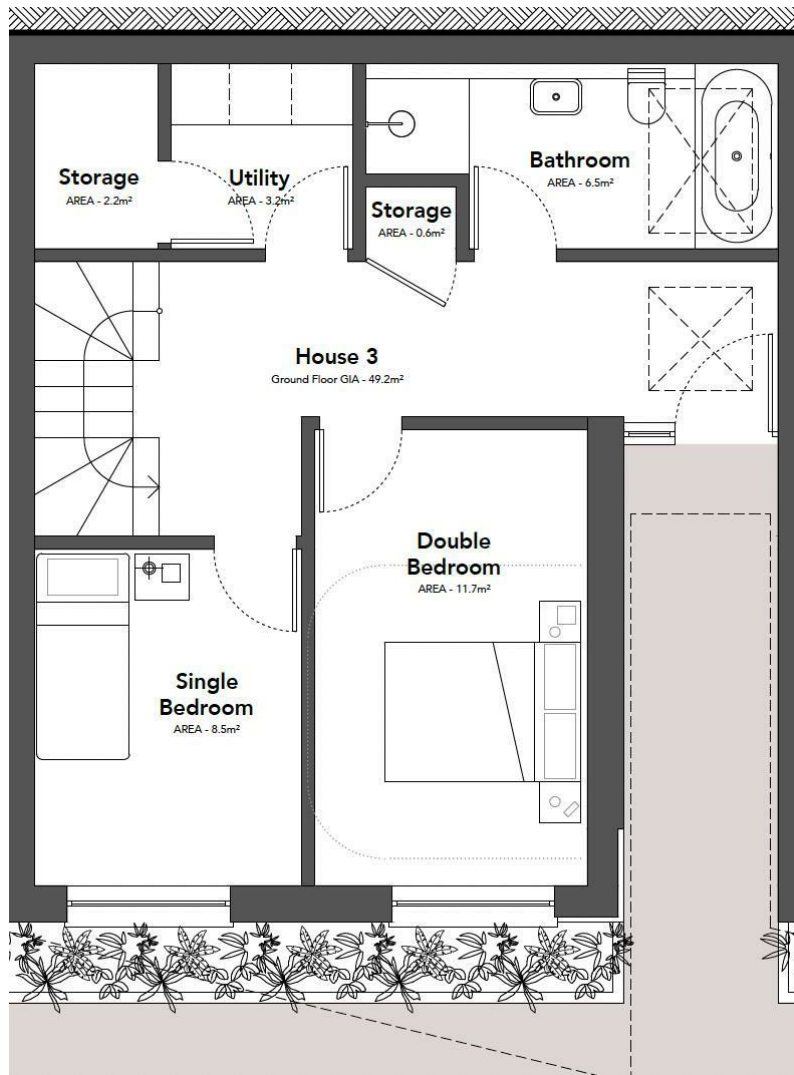
Designed to sit naturally within their woodland-inspired setting, these homes combine contemporary architecture with sustainable design. Living roofs encourage biodiversity, while solar panels, Nest thermostats and energy-efficient lighting ensure the homes are both stylish and practical.


Inside, the layout has been carefully planned for modern living. The ground floor offers a dedicated home office or studio space alongside the family bedrooms and main bathroom.

Upstairs, the kitchen is sleek and contemporary with high-spec German cabinetry, integrated appliances and a breakfast bar at its centre. At the rear, large bifold doors open onto a decked terrace and private garden, creating a seamless indoor-outdoor living space.

Also on this floor is the principal suite with a stylish en-suite shower room and private balcony to the front perfect for a morning coffee with views across the surrounding landscape. Throughout, the interiors use a calm, natural palette with wood-style flooring in the living areas and seagrass-style carpets in the bedrooms. Thanks to the elevated position, the homes enjoy far-reaching views





Energy Efficiency Rating		
	Current	Potential
<i>Very energy efficient - lower running costs</i>		
(92 plus) A		
(81-91) B		
(69-80) C		
(55-68) D		
(39-54) E		
(21-38) F		
(1-20) G		
<i>Not energy efficient - higher running costs</i>		
England & Wales	EU Directive 2002/91/EC 	

DIRECTIONS

CONTACT

64 Queens Road
Brighton
East Sussex
BN1 3XD

E: info@myhausbrighton.co.uk

T: 01273 286788

myhausbrighton.co.uk



MyHausProperty
Sales & Lettings