



Price

£200,000

Leasehold

1x  1x  1x 

Nash Road, Chadwell
Heath, Essex, RM6

OVER 60?

Secure this property
for up to **59% less!**

 **DOUGLAS
ALLEN**
Helping you move forwards



Main features

- Attractive ground floor purpose built flat with long lease
- Off street parking
- Own rear garden
- Close to good road & transport links
- Ideal purchase for any first time buyer
- Walking distance to local shops & amenities

Accommodation

GROUND FLOOR

Entrance Hall

Lounge/Dining Room: 16'8 x 9'8
(5.08m x 2.95m)

Kitchen: 9'7 x 7'6 (2.92m x 2.29m)

Bedroom : 11'4 x 8'2 (3.46m x 2.49m)

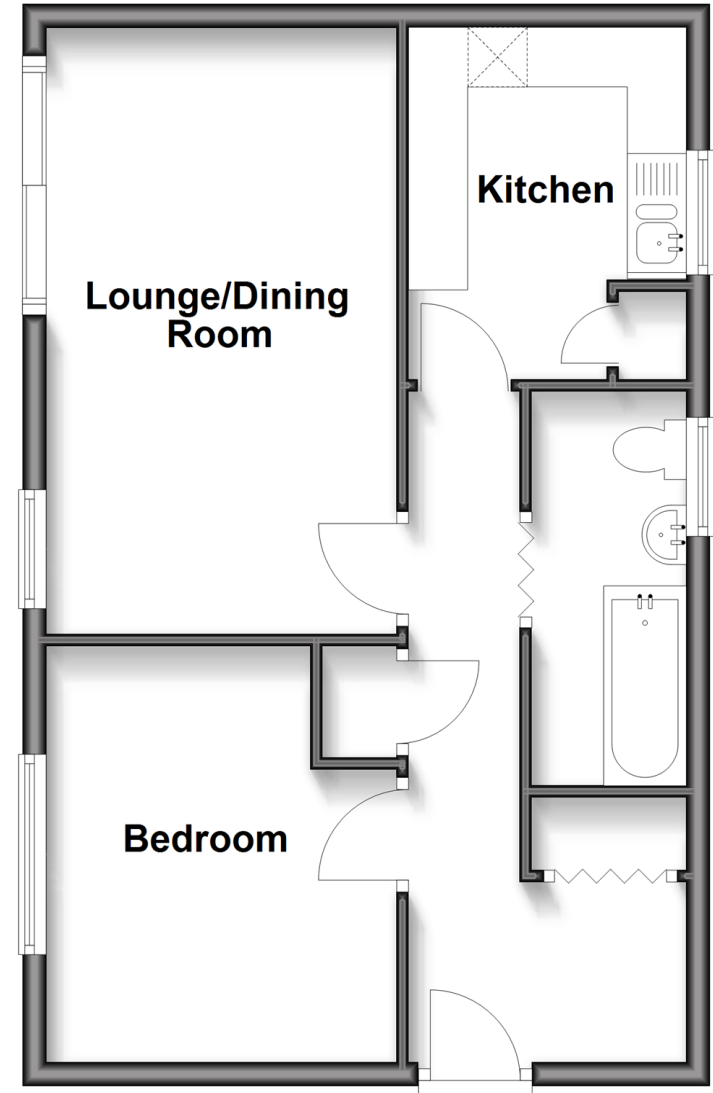
Bathroom

OUTSIDE

Rear Garden

Ground Floor

Approx. 47.2 sq. metres (507.8 sq. feet)



Call Chadwell Heath - 020 8597 0043 ■ douglasallen.co.uk

- A private rental licensing scheme applies to some properties in this area, please contact us before proceeding
- Legal advice should be taken to verify fixtures/fittings, planning, alterations and/or lease details
- Appliances & services are untested, dimensions are approximate and floor plans are not to scale
- Through a Homewise Home For Life Plan people aged 60+ can secure this property for up to 59% less, by purchasing a Lifetime Lease.



50714106/20250221/MH/MS