

Property ref: 179878

## Castle Street, Reading, RG1 7SB

£1,695 PCM

**HASLAM'S**  
Lettings



A well presented split level three bedroom apartment located in the town centre. The apartment provides excellent access to Reading mainline station, local bus routes and the Oracle shopping centre. Reading Borough Council tax band B.

Water supply: Mains

Drainage info: Mains

Electricity supply: Mains

Broadband/Mobile Info: Connections available. For an indication of specific speeds and supply of Broadband and Mobile, we advise applicants go to the Ofcom website Broadband and Mobile Coverage Checker.

### Available Now

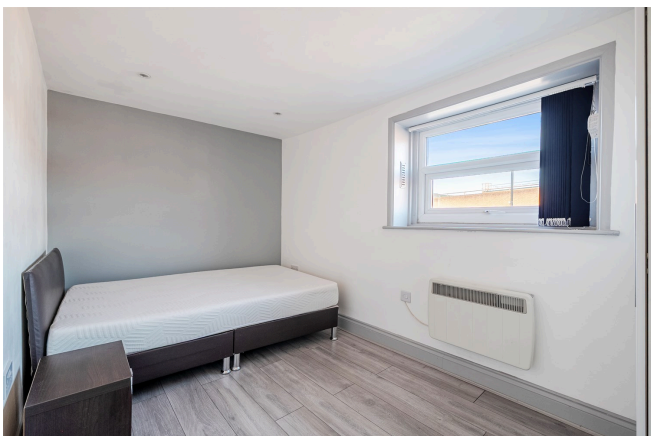
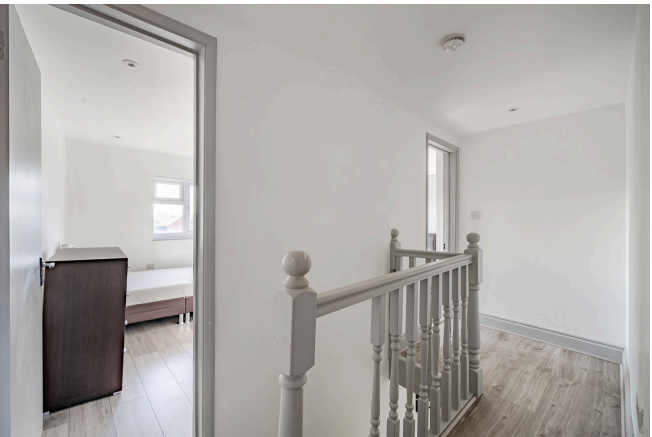
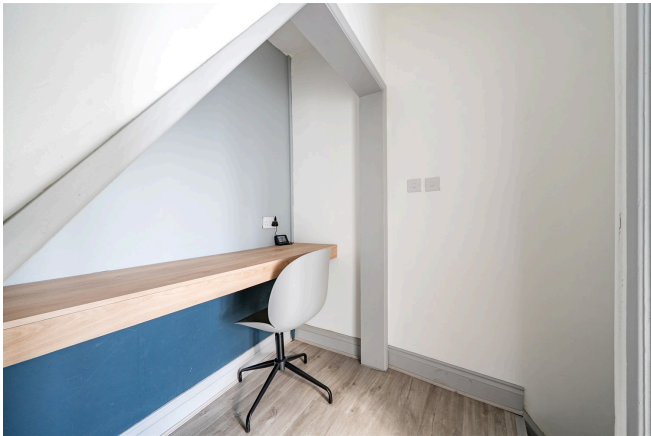
- Available to sharers for £1800pcm; Total floor area approx 67m<sup>2</sup> - floorplan to follow
- Three double bedrooms; Additional office space
- One shower room; No parking
- Modern kitchen with appliances
- Electric heating; EPC rating E
- Furnished; Managed by LANDLORD

\*Fees For Assured Shorthold Tenancies: when you rent a property from us you will be required to pay a sum equivalent to one weeks' rent for a holding deposit. Upon successful application, this amount will be off set against your first months' rent. You will also be required to pay a security deposit equivalent to 5 weeks' rent which will be held and protected in line with Deposit legislation. For more information about our fees please visit: [www.haslams.net](http://www.haslams.net)  
Fees for all other tenancies (Non Housing Act Tenancies / Company Lets): when you rent a property from us we will charge you a one-off fee per property. This charge is the equivalent of 15 days of the monthly rental charge (+VAT) with a minimum fee of £450 (inc.VAT) up to a maximum of £650 (inc.VAT). Other fees may apply depending on your circumstances.

**0118 960 1055**

**[lettings@haslams.net](mailto:lettings@haslams.net) [www.haslams.net](http://www.haslams.net)**

**Haslams Estate Agents Ltd, 159 Friar Street, Reading, Berkshire, RG1 1HE**

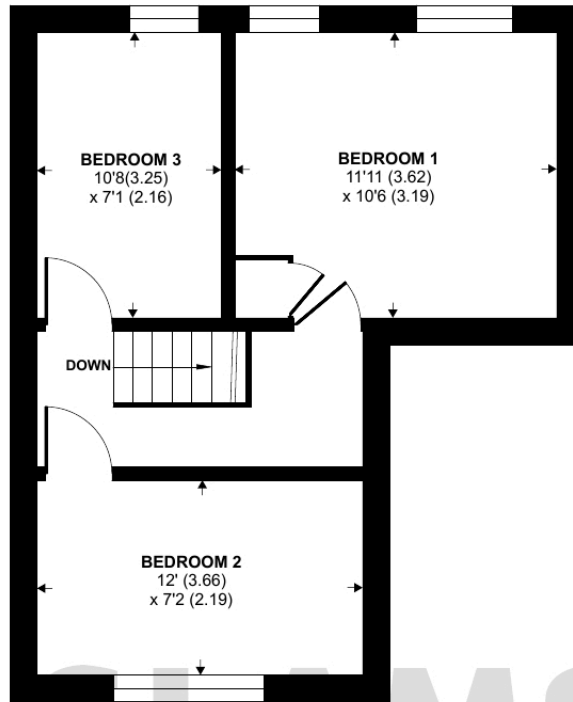




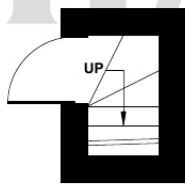
# Castle Street, Reading, RG1

Approximate Area = 732 sq ft / 68 sq m

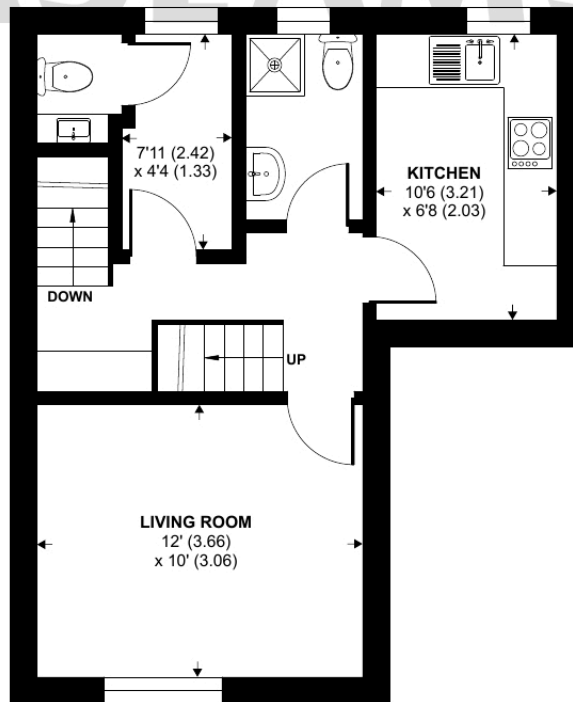
For identification only - Not to scale



**SECOND FLOOR**



**GROUND FLOOR**



**FIRST FLOOR**



Floor plan produced in accordance with RICS Property Measurement 2nd Edition, Incorporating International Property Measurement Standards (IPMS2 Residential). © n̄checom 2026. Produced for Haslamss. REF: 1447483