



**Guide Price**  
**£235,000**

**Leasehold**

1x  1x  1x 

**Woodside Court,  
Marlborough Road,  
Romford, Essex, RM7**

**OVER 60?**

Secure this property  
for up to **59% less!**

 **DOUGLAS  
ALLEN**  
Helping you move forwards



## Main features

- Gated high quality ground floor apartment
- Large open plan lounge/kitchen area
- Secure video entry system
- Good size bedroom
- Modern bathroom
- Allocated parking space
- Patio garden overlooking open fields

## Accommodation

### GROUND FLOOR

#### Hallway

Lounge/Kitchen/Dining Room: 19'6 x 18'0 (5.95m x 5.49m)

Bedroom : 13'0 x 7'9 (3.97m x 2.36m)

#### Bathroom

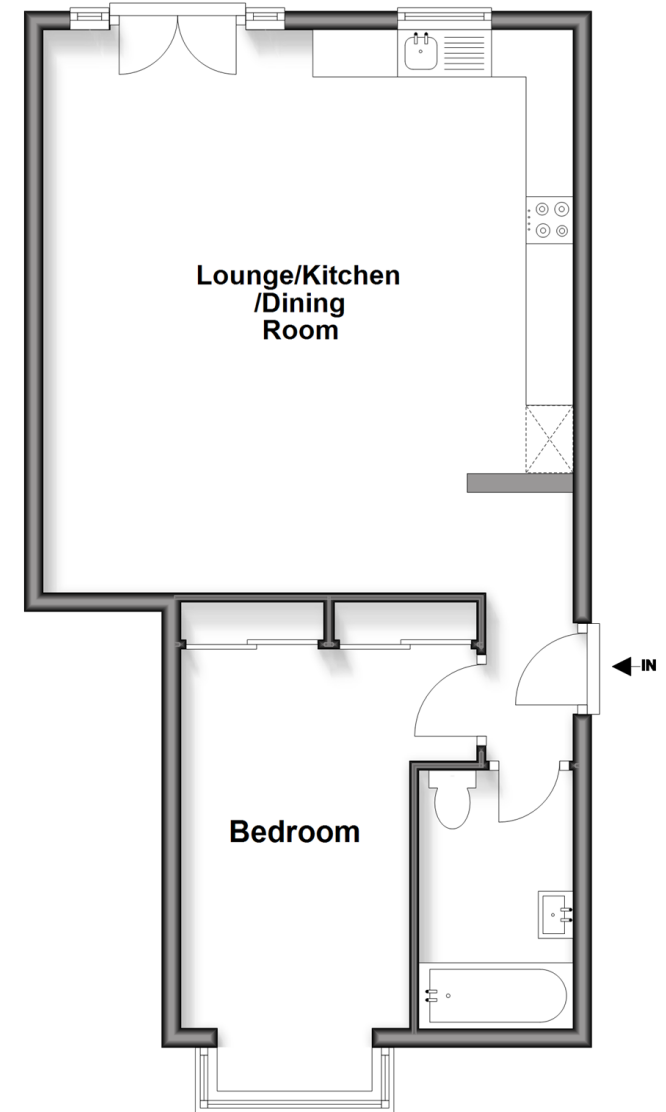
### OUTSIDE

#### Patio Garden

#### Allocated Parking Space

## Ground Floor

Approx. 53.6 sq. metres (576.7 sq. feet)



Call Hornchurch - 01708 437777 ■ [douglasallen.co.uk](http://douglasallen.co.uk)

- A private rental licensing scheme applies to some properties in this area, please check with the Local Authority before proceeding
- Legal advice should be taken to verify fixtures/fittings, planning, alterations and/or lease details
- Appliances & services are untested, dimensions are approximate and floor plans are not to scale
- Through a Homewise Home For Life Plan people aged 60+ can secure this property for up to 59% less, by purchasing a Lifetime Lease



51916472/20260224/CC1/DT