



Hardwick Court
Tamworth, B79 7HF

£125,000

Property Features

- Well presented one bedroom apartment
- Spacious and bright living room
- Modern fitted kitchen with integrated cooking appliances
- Generous bedroom
- Contemporary bathroom suite
- Neutral decor throughout
- Allocated parking space
- Well maintained communal grounds
- Ideal first time purchase or investment opportunity
- Convenient location with excellent local amenities nearby



Full Description

This well presented one bedroom apartment offers comfortable and low maintenance living, making it an ideal purchase for first time buyers, downsizers or investors. Situated within an attractive residential development, the property benefits from a practical layout, generous room proportions and an allocated parking space. The apartment is tastefully decorated throughout and provides bright, welcoming accommodation that is ready for immediate occupation. With a spacious living area, modern kitchen and well proportioned double bedroom, the property offers an excellent balance of comfort and convenience.



THE FORE

The property is situated within a well maintained apartment development, enjoying an attractive position surrounded by established landscaping and communal grounds. The building presents well from the outset, with neat brick elevations and attractive communal areas creating a welcoming environment for residents and visitors. A dedicated allocated parking space provides convenient off road parking, while additional visitor parking may be available within the development. Pedestrian pathways lead to the communal entrance, offering secure access to the apartment. The property also benefits from a balcony overlooking the communal area.



INTERNAL

The accommodation is thoughtfully arranged and designed to maximise both space and natural light. The spacious living room provides an excellent area for relaxing and entertaining, with ample room for lounge furniture as well as a dining table if desired. Large windows create a bright and airy atmosphere, enhancing the sense of space throughout the main living area.

The kitchen is fitted with a range of modern wall and base



units complemented by practical work surfaces and integrated cooking appliances. The bedroom offers generous accommodation with plenty of room for freestanding furniture, while the bathroom is fitted with a contemporary suite comprising a bath with shower over, wash hand basin and WC. Neutral decor throughout the apartment allows prospective purchasers to easily personalise the space to their own taste.

LIVING ROOM

9' 5" x 14' 2" (2.87m x 4.32m)

KITCHEN

6' 9" x 6' 8" (2.06m x 2.03m)

BEDROOM ONE

8' 2" x 10' 8" (2.49m x 3.25m)

BATHROOM

6' 9" x 5' 6" (2.06m x 1.68m)

EXTERNAL

Externally, residents benefit from access to attractive communal grounds which are maintained to a high standard and provide pleasant surroundings throughout the year. The development enjoys a peaceful and well cared for atmosphere, contributing to the overall appeal of the property.

The allocated parking space is conveniently positioned for everyday use and adds further practicality to the apartment. Combined with the well maintained communal areas and attractive setting, the external features complement the ease of living offered by this appealing home.

ANTI MONEY LAUNDERING

In accordance with the most recent Anti Money Laundering Legislation, buyers will be required to provide proof of identity and address to the Taylor Cole Estate Agents once an offer has been submitted and accepted (subject to contract) prior to Solicitors being instructed.

TENURE

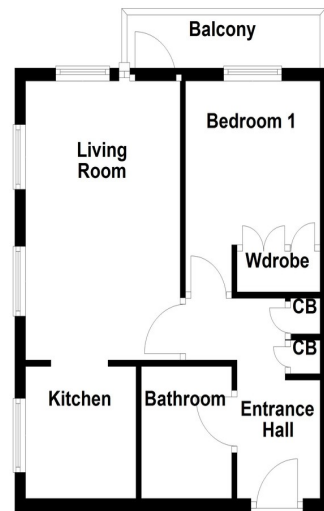
We have been advised that this property is leasehold however, prospective buyers are advised to verify the position with their solicitor / legal representative.

VIEWING

By prior appointment with Taylor Cole Estate Agents on the contact number provided.



Ground Floor



8 Victoria Road
Tamworth
Staffordshire
B79 7HL

www.taylorcole.co.uk
sales@taylorcole.co.uk
01827 311412

Agents Note: Whilst every care has been taken to prepare these sales particulars, they are for guidance purposes only. All measurements are approximate are for general guidance purposes only and whilst every care has been taken to ensure their accuracy, they should not be relied upon and potential buyers are advised to recheck the measurements