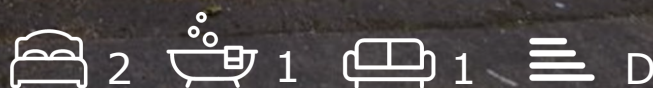




7 Napier Street  
, Bristol, BS5 9UG

**Asking price £320,000**



# 7 Napier Street



## Description

Tucked away in a cul-de-sac in Barton Hill this Victorian end of terrace home will be an ideal first time home! Church Road, Netham Park and Old Market are within walking distance along with Lawrence Hill train station.

This lovely home is ideal for those looking to add their own style and includes a bright open plan living arrangement with bayed living space and a great sized kitchen.

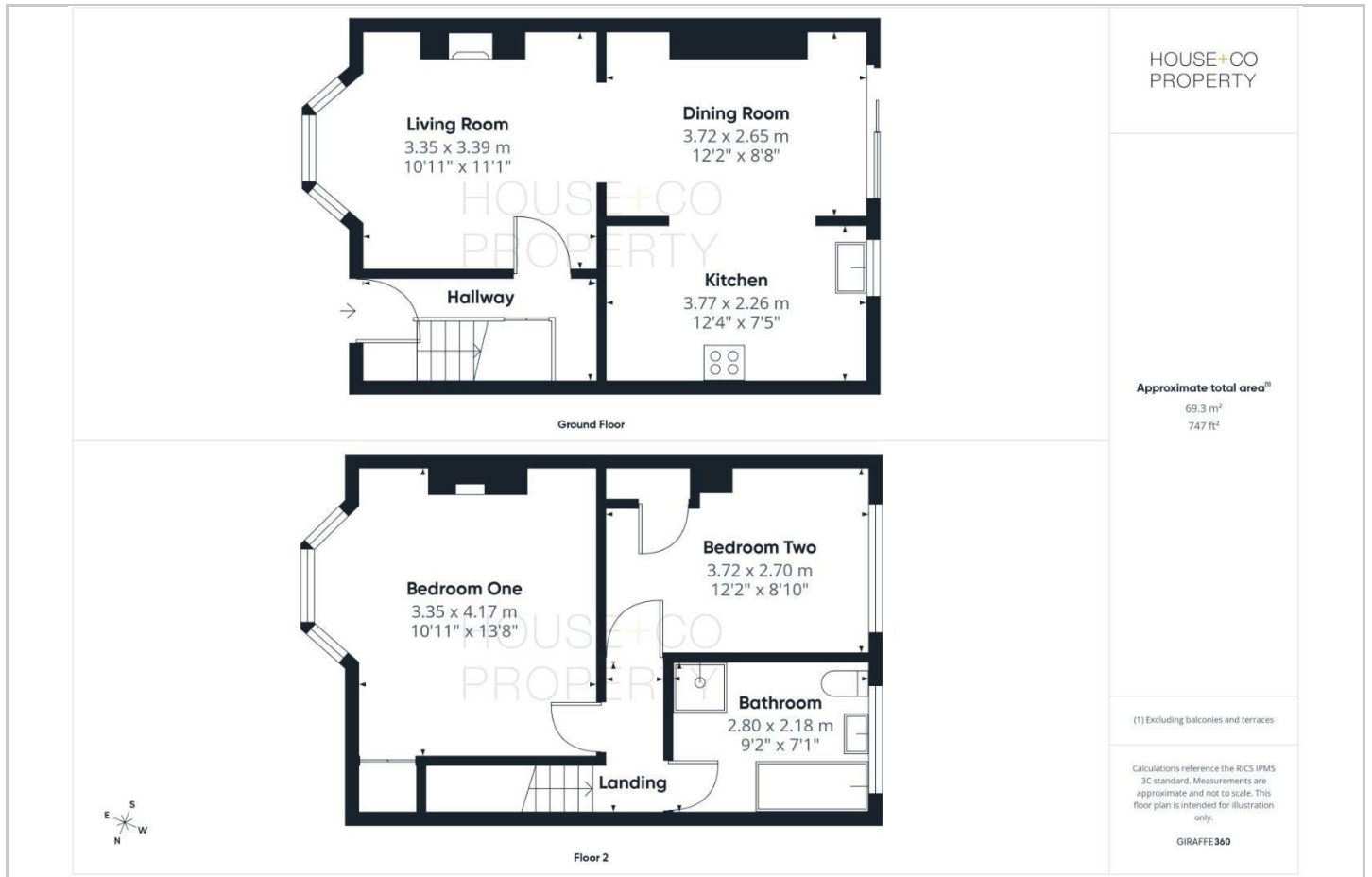
Upstairs are two double bedrooms and a bathroom with separate bath and shower. Outside to the rear is a courtyard style garden with raised beds and patio. Offered with no onward chain this also benefits from gas central heating and double glazing. Please call to view!

- VICTORIAN END TERRACE
- TWO DOUBLE BEDROOMS
- BAY FRONTED
- SOUTH FACING GARDEN
- NO CHAIN
- CUL-DE-SAC LOCATION
- OPEN PLAN LIVING
- KITCHEN DINING
- UPSTAIRS BATHROOM

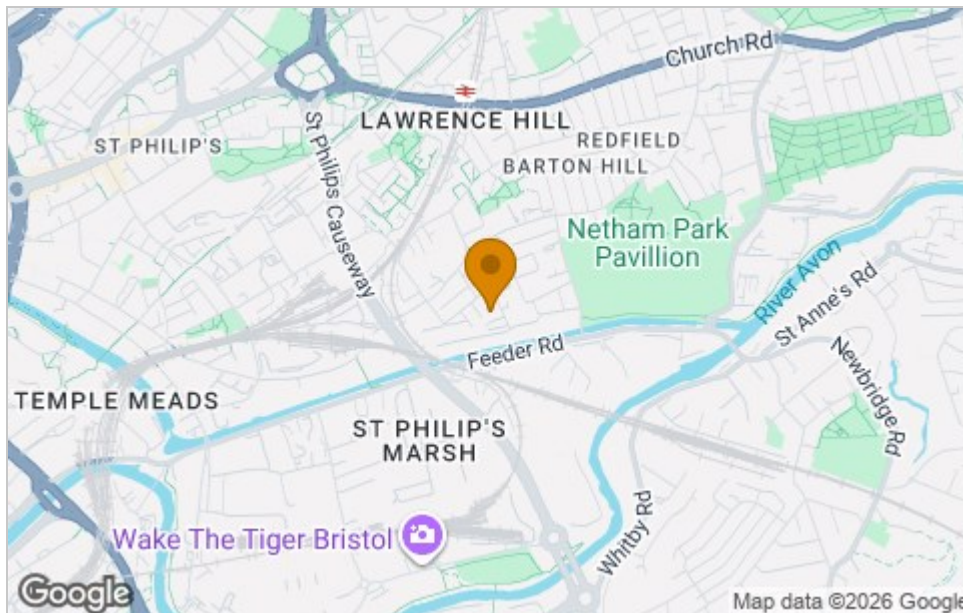




## Floor Plan



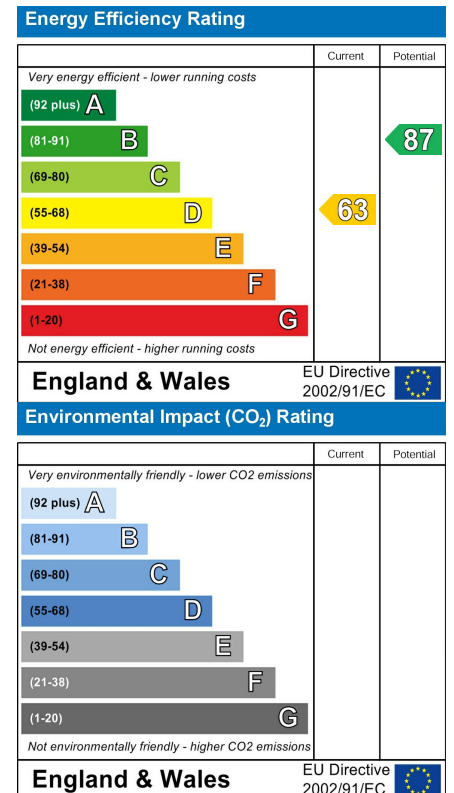
## Area Map



## Viewing

Please contact our House + Co Property (Sales) Office on 0117 907 0020 if you wish to arrange a viewing appointment for this property or require further information.

## Energy Efficiency Graph



These particulars, whilst believed to be accurate are set out as a general outline only for guidance and do not constitute any part of an offer or contract. Intending purchasers should not rely on them as statements of representation of fact, but must satisfy themselves by inspection or otherwise as to their accuracy. No person in this firm's employment has the authority to make or give any representation or warranty in respect of the property.