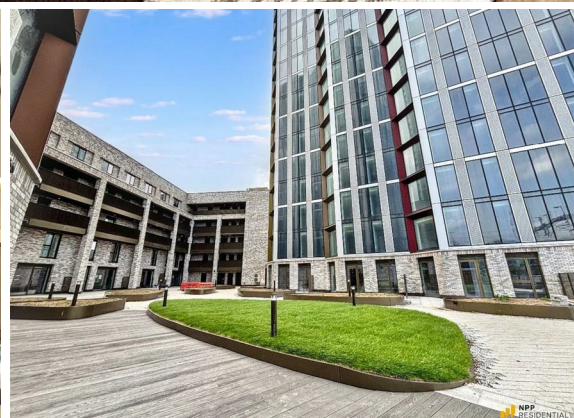


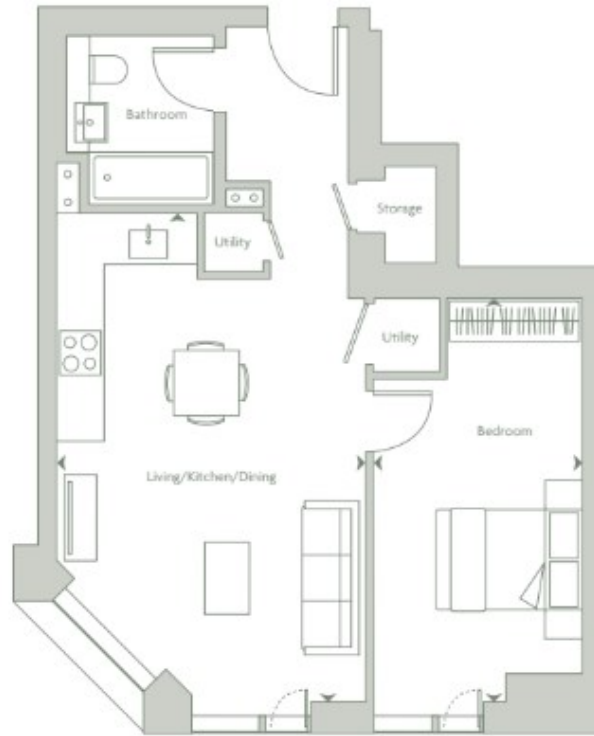


**1 Bed
Apartment
located in 190
Dantzic Street**

Asking Price £255,000



 **NPP**
RESIDENTIAL



Features on floors
 02-22 (Apartment 007)
 23-26 (Apartment 006)

Living / Kitchen / Dining 6586 x 4205mm
 Bedroom 1 5485 x 2840mm



Internal Areas (NIA) 531 sq m 571.5 sq ft

Apartment locator

EPC Rating:
 Council Tax Band: C

Energy Efficiency Rating		Current	Potential
Very energy efficient - lower running costs			
(92 plus) A			
(81-91) B			
(69-80) C			
(55-68) D			
(39-54) E			
(21-38) F			
(1-20) G			
Not energy efficient - higher running costs			
England & Wales		EU Directive 2002/91/EC	

DIRECTIONS

CONTACT

22 Lloyd Street
 Manchester
 M2 5WA

E: info@nppresidential.co.uk
 T: 0161 639 0059
<https://nppresidential.co.uk/>

