



Arundel Road, Guide Price £220,000 to £230,000

- Two Reception Rooms
- Low-Maintenance Enclosed Garden
- Brick Shed Providing Additional Storage
- On-Street Parking
- Close to Schools, Shops, and Local Amenities
- Excellent Transport Links
- EPC Rating: D



 3  1  2

Pinkmove

01633 746088
team@pinkmove.co.uk



About the property

Ideally situated on Arundel Road in the sought-after Beechwood area of Newport, this well-presented home offers generous accommodation and a convenient location—making it an excellent choice for families, professionals, or first-time buyers.

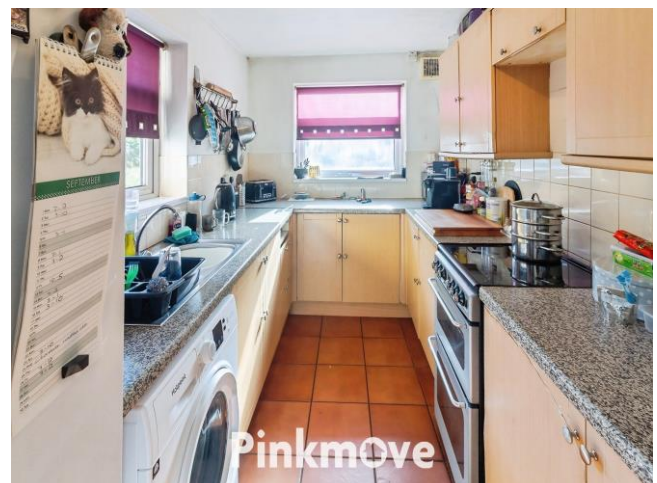
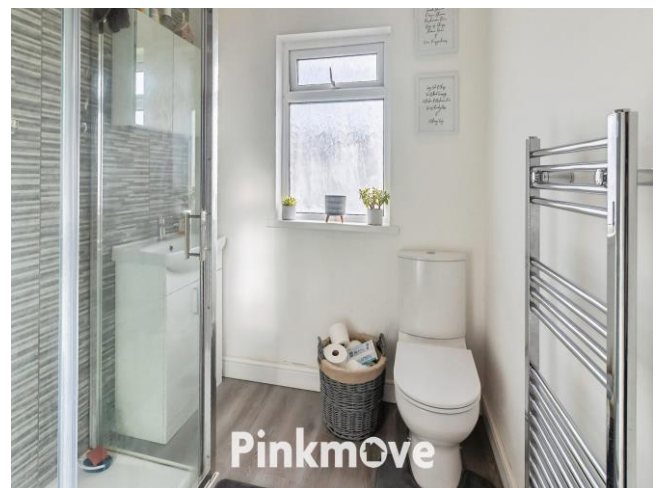
The property boasts two spacious reception rooms, providing flexible living space for both relaxation and entertaining. The well-appointed kitchen offers ample storage and worktop space, ideal for everyday cooking and family meals.

Upstairs, you'll find two double bedrooms and one single bedroom, along with a modern family shower room.

To the rear, the property benefits from an enclosed garden featuring a brick-built shed fitted with electrics—perfect for storage, a workshop, or potential use as a home office.

Located just a short walk from Eveswell Primary School and under a mile from St Julian's School, the property is perfectly positioned for families. Newport Retail Park and the city centre are easily accessible, offering a wide range of shops, restaurants, and leisure facilities. Beechwood Park is also nearby, providing green space for outdoor activities.

Transport links are excellent, with Newport train station approximately 1.2 miles away, offering direct services to Cardiff, Bristol, and London. The area also benefits from good road connections via the M4 and regular local bus services.





Accommodation

Living Room

10' 10" x 12' 5" (3.30m x 3.78m)

Dining Room

11' 11" x 19' 4" (3.63m x 5.89m)

Kitchen

14' 8" x 7' 2" (4.47m x 2.18m)

Bedroom 1

12' x 12' 6" (3.66m x 3.81m)

Bedroom 2

10' 11" x 12' 6" (3.33m x 3.81m)

Bedroom 3

7' 6" x 6' 5" (2.29m x 1.96m)

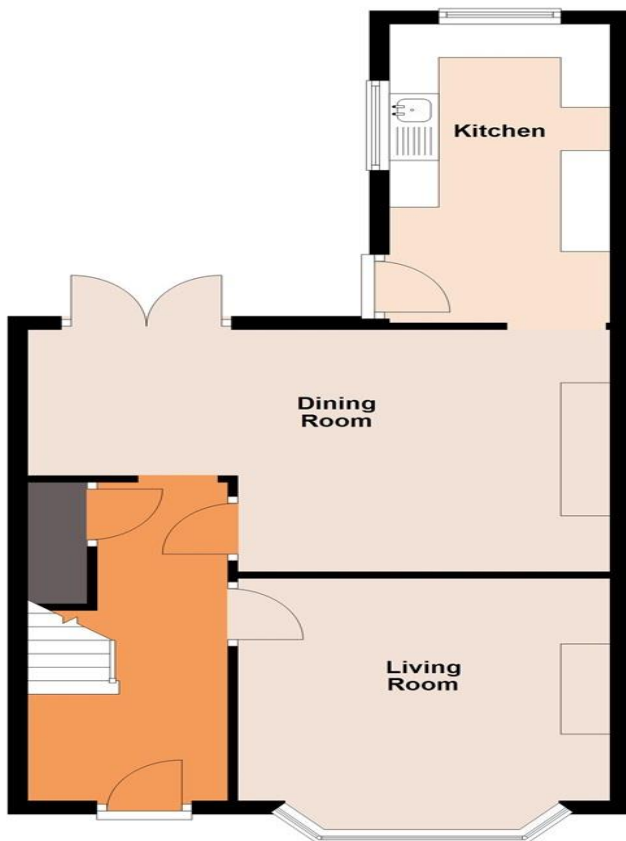
Shower Room

7' 6" x 6' 4" (2.29m x 1.93m)

Floorplan

Ground Floor

Approx. 52.3 sq. metres (563.1 sq. feet)



First Floor

Approx. 36.5 sq. metres (393.4 sq. feet)



Total area: approx. 88.9 sq. metres (956.5 sq. feet)
31 Arundel Road

Important Information

Note while we endeavour to make our sales details accurate and reliable, if there is any point which is of particular interest to you, please contact the office and we will be pleased to confirm the position for you. We have not personally tested any apparatus, equipment, fixtures, fittings or services and cannot verify they are in working order or fit for their purposes. Nothing in these particulars is intended to indicate that carpets or curtains, furnishings or fittings, electrical goods (whether wired or not). Gas fires or light fittings or any other fixtures not expressly included form part of the property offered for sale. This computer generated Floorplan, if applicable, is intended as a general guide to the layout and design of the property. It is not to scale and should not be relied upon for dimensions. Tenure: We cannot confirm the tenure of the property as we have not had access to the legal documents. The buyer is advised to obtain verification from their solicitor or surveyor.

Peter Alan Limited is registered in England and Wales under company number 2073153, Registered Office is Cumbria House, 16-20 Hockliffe Street, Leighton Buzzard, Bedfordshire, LU7 1GN. VAT Registration Number is 500 2481 05. For activities relating to regulated mortgages and non-investment insurance contracts, Peter Alan Limited is an appointed representative of Connells Limited which is authorised and regulated by the Financial Conduct Authority. Connells Limited's Financial Services Register number is 302221. Most buy-to-let