



Mallings Drive, Bearsted, Maidstone, Kent, ME14 4HB
Offers In Excess Of £700,000



This beautifully modernised five bedroom detached property offers spacious living over three floors, while spanning over 1,700 sqft internally. Located in the desirable estate of Mallings Drive, Bearsted, it is just a 10 minute walk from Bearsted station and a stone's throw away from the charming village green and popular local café and pubs.

Approaching the home, you will find a block-paved driveway that accommodates up to three vehicles, complemented by a small and well-maintained garden, that enhances its curb appeal. As you step inside, you are welcomed by a spacious and airy entrance hall, filled in natural light. The ground floor features a convenient W.C., a generous sitting room complete with a cosy log burner and a thoughtfully designed rear extension hosting a large kitchen/breakfast room, alongside a separate dining room.

On the first floor, you'll find three good-sized bedrooms, including the principal, and two further doubles, one of which is currently used as a separate dressing room equipped with fitted wardrobes, all served by the modern family bathroom. Venturing to the second floor, the well-executed loft conversion offers two additional bedrooms, paired with a contemporary shower room.

Externally this impressive home boasts an integral garage offering ample storage space, and a private rear garden boasting a high degree of privacy, which features both a patio seating area and a well-kept lawn, all framed by established trees. Tenure: Freehold. Council Tax Band: F. EPC rating: C.



LOCATION

The property boasts easy access to the much loved local public houses and restaurants, as well as community events on the village green, including summer fetes and cricket matches. Maidstone town centre is nearby, offering a wealth of shopping and entertainment options, with excellent transport links including Bearsted mainline train station, and close proximity to the M2 and M20 motorways.

ACCOMODATION

GROUND FLOOR:

Entrance hall

Downstairs W.C.

Sitting room

Dining room

Kitchen/breakfast room

FIRST FLOOR:

Bedroom one

Bedroom three

Bedroom five/Dressing room

SECOND FLOOR:

Bedroom two

Bedroom four

EXTERNALLY:

Driveway

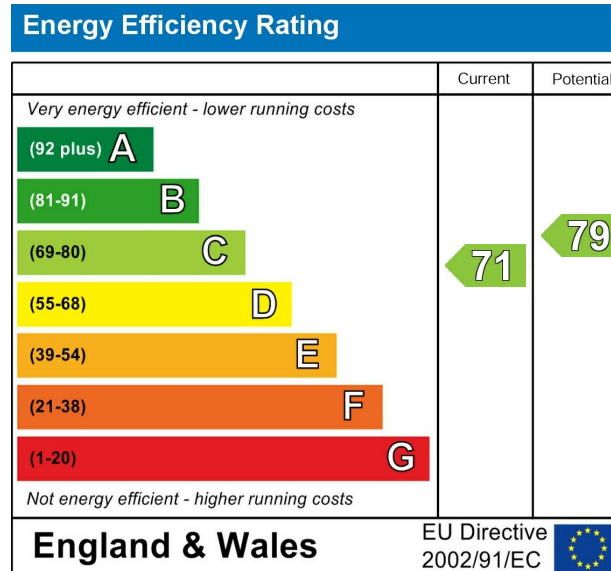
Garage

Front garden

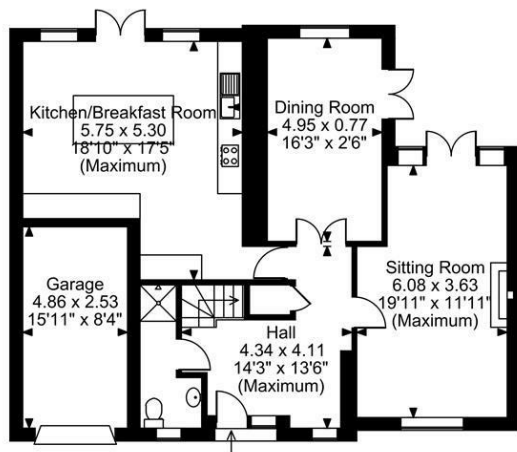
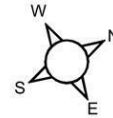
Rear garden

VIEWING

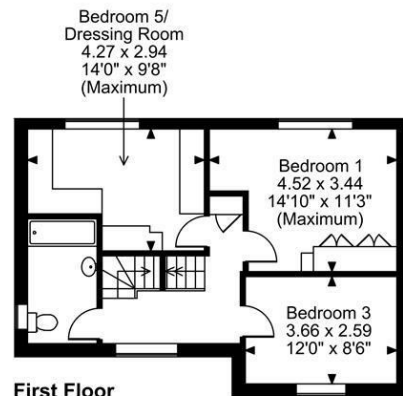
Strictly by arrangement with the Agent's Bearsted Office, 132 Ashford Road, Bearsted, Maidstone, Kent ME14 4LX. Tel: 01622 739574.



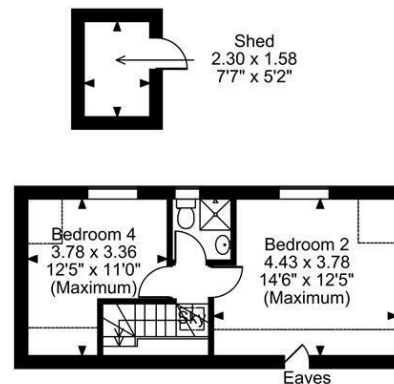
Mallings Drive, Bearsted, Maidstone, Kent
Approximate Gross Internal Area
Main House = 1716 Sq Ft/159 Sq M
Garage = 132 Sq Ft/12 Sq M
Shed = 39 Sq Ft/4 Sq M
Total = 1887 Sq Ft/175 Sq M



Ground Floor



First Floor



First Floor

FOR ILLUSTRATIVE PURPOSES ONLY - NOT TO SCALE

The position & size of doors, windows, appliances and other features are approximate only.

□ □ □ □ Denotes restricted head height

© ehouse. Unauthorised reproduction prohibited. Drawing ref. dig/8676384/LCO

