



**OVER 60?**

Secure this property  
for up to **59% less!**

**Guide Price**  
**£350,000**

**Freehold**

2x  1x  1x 

**Bridgecote Lane, Noak  
Bridge, Essex, SS15**

 **DOUGLAS  
ALLEN**  
Helping you move forwards



## Main features

- Unique hexagonal bungalow full of character
- Popular Noak Bridge location
- Attractive low maintenance rear garden
- Garage and parking
- Short drive to local schools

## Accommodation

### GROUND FLOOR

Hallway : 11'6 x 2'9 (3.51m x 0.84m)

Lounge/Diner/Kitchen: 25'3 at widest point x 12'0 (7.70m x 3.66m)

Bedroom 1: 11'7 at widest point x 11'4 (3.53m x 3.46m)

Bedroom 2: 9'1 x 7'8 (2.77m x 2.34m)

Bathroom

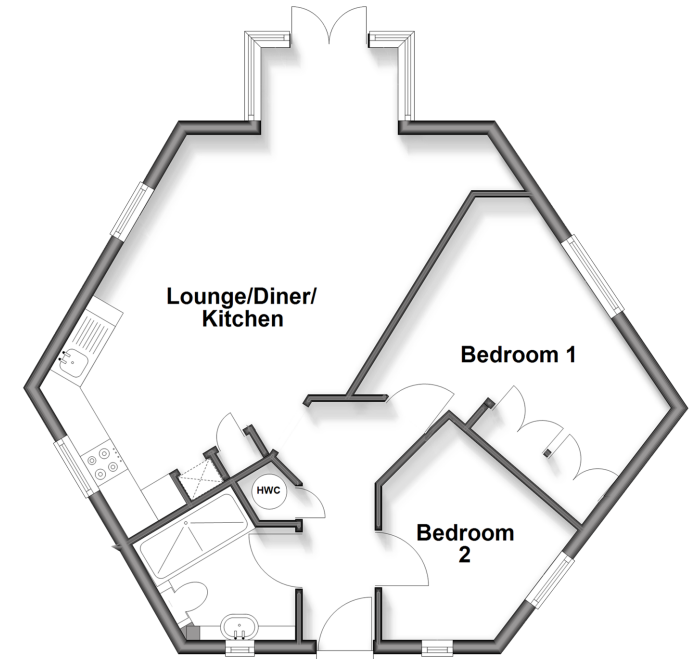
### OUTSIDE

Rear Garden

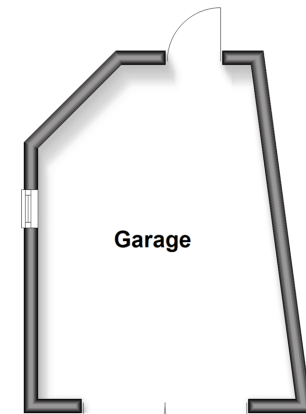
Garage

Parking

**Ground Floor**  
Approx. 50.5 sq. metres (544.0 sq. feet)



**Outbuilding**  
Approx. 15.3 sq. metres (165.0 sq. feet)



**Call Billericay - 01277 631377 ■ douglasallen.co.uk**

■ Through a Homewise Home For Life Plan people aged 60+ can secure this property for up to 59% less, by purchasing a Lifetime Lease



50306202/20260502/KM/OG