



## Sheen Court, TW10

£625,000

A bright and spacious, three double bedroom mansion block apartment, measuring approximately 787 sq ft, situated on the top floor of the ever-popular gated Sheen Court development. Further benefits include a Share of Freehold, making this an attractive long-term investment as well as a comfortable home.

Sheen Court is a well maintained private sought after residential development set within extensive communal grounds. Richmond and North Sheen stations offer tube or rail services into Central London via the District Line, South West Trains and London Overground.

### Features

- Three Bedrooms
- Spacious Reception Room
- No Onward Chain
- Modern Bathroom
- Communal Gardens
- Residents Parking



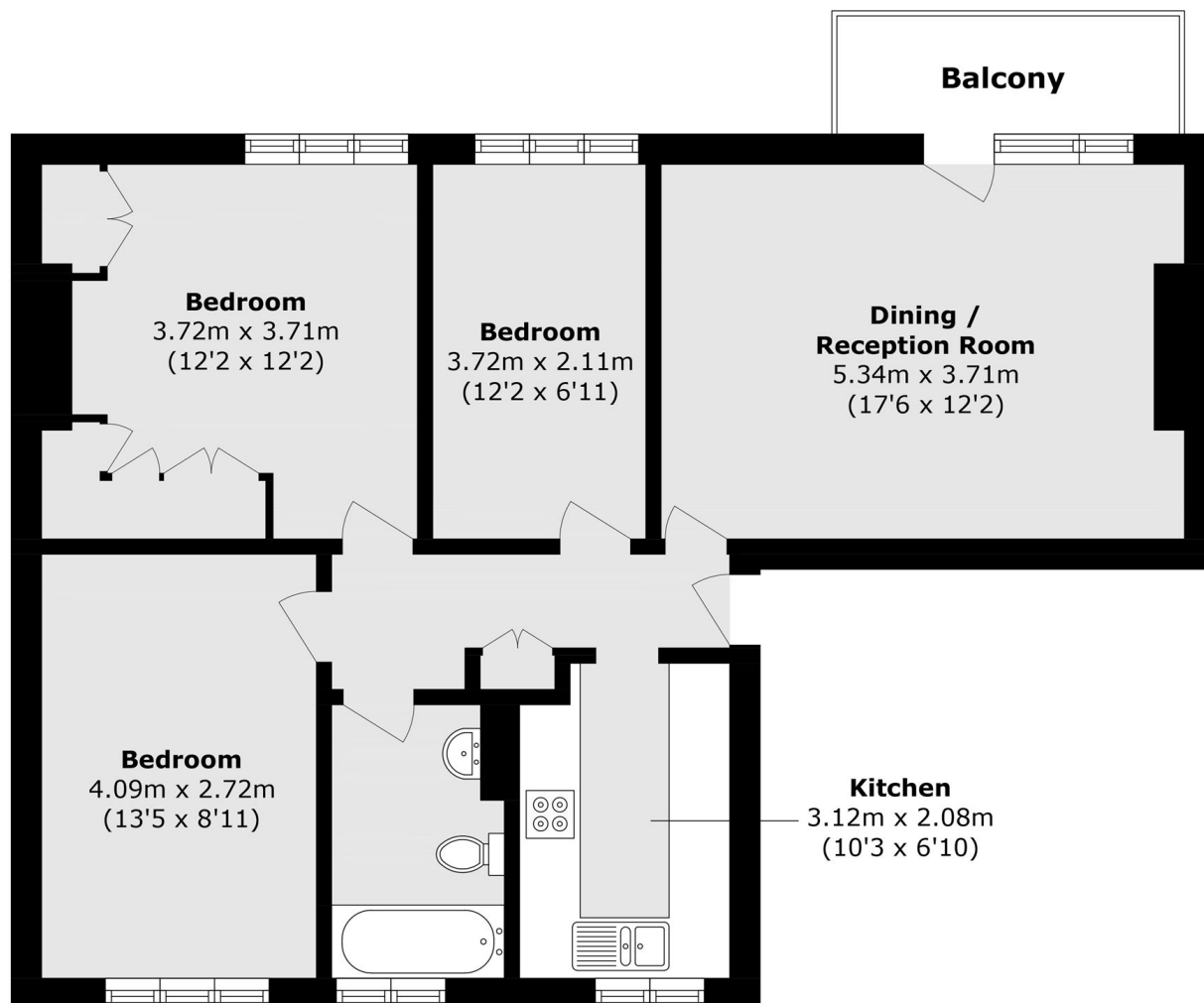
## Sheen Court, TW10

This well-presented third-floor apartment offers a bright and practical layout, ideal for comfortable modern living. A welcoming entrance hall with a handy storage cupboard leads through to a spacious reception room, filled with natural light and providing ample space for both relaxing and entertaining. The property also features a separate, well-appointed kitchen, offering practicality and functionality.

There are three generously sized double bedrooms, each offering flexible accommodation for family living, guests, or a home office. The home is further complemented by a sleek, modern bathroom. A private balcony adds an appealing outdoor space.



# Sheen Court, Richmond, TW10



Total area (approx.): 71.5 sq. m (769.6 sq. ft)

Balcony area (approx.): 4.2 sq. m (45.2 sq. ft)