

Millman Street, WC1N

£650,000

Situated on the top floor of a beautiful period conversion, there are views of the city to the rear, a separate living room, fitted storage and wooden flooring throughout.

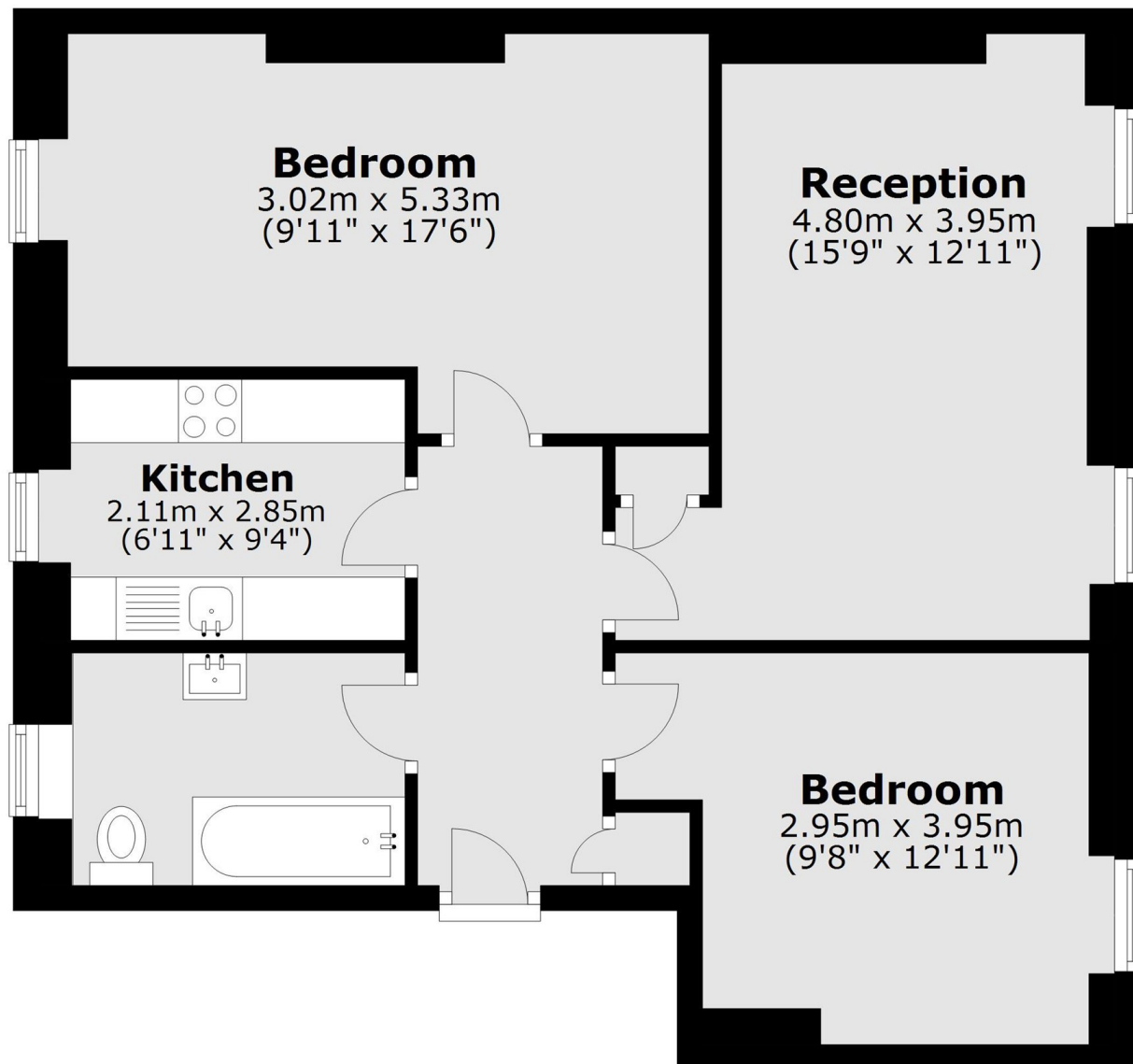
Coram Mansions is located on Millman Street just moments from Russell Square station and Lamb's Conduit Street with many amenities and boutique shops, including places to eat and drink.

Features

- Two Double Bedrooms
- Separate Kitchen
- Excellent Condition
- Top Floor
- Long Lease
- No Onward Chain

**Millman Street,
London, WC1N**

Fourth Floor



Total area: approx. 61.5 sq. metres (661.6 sq. feet)