



24 Carmelite Road, Aylesford

Guide Price £410,000

eden  
estates



# 24 Carmelite Road

Aylesford, Aylesford

GUIDE £410,000 to £450,000. Immaculate 3-bed semi in gated Aylesford development. Features 17ft lounge/diner, modern kitchen, en suite, 2 x carport, south facing rear garden.

Council Tax band: D

Tenure: Freehold

- 3 BEDROOM HOUSE
- SEMI DETACHED
- WONDERFUL SOUTH FACING REAR GARDEN WITH SUMMERHOUSE/OFFICE
- 17FT LOUNGE/DINER
- BEAUTIFUL FULLY FITTED KITCHEN
- EN SUITE AND SEPARATE WC
- 2 X CARPORT
- IMMACULATE PRESENTATION THROUGHOUT
- GATED DEVELOPMENT IN HIGHLY DESIRABLE AYLESFORD



eden  
estates

**LOUNGE/DINER**

17' 0" x 16' 5" (5.19m x 5.01m)

**KITCHEN**

11' 2" x 8' 8" (3.40m x 2.64m)

**BEDROOM**

10' 5" x 9' 4" (3.18m x 2.84m)

**BEDROOM**

11' 5" x 9' 8" (3.49m x 2.94m)

**BEDROOM**

9' 5" x 6' 6" (2.86m x 1.97m)

**BATHROOM**

**EN SUITE**

**SEPARATE WC**

**HALLWAY**

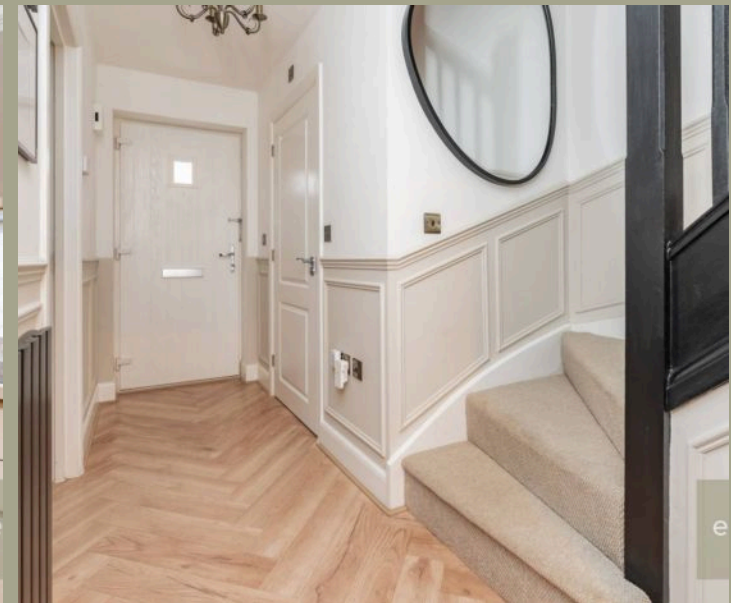
**LANDING**

**SUMMERHOUSE**

9' 2" x 7' 7" (2.80m x 2.32m)



eden  
estates



eden  
estates





## GARDEN

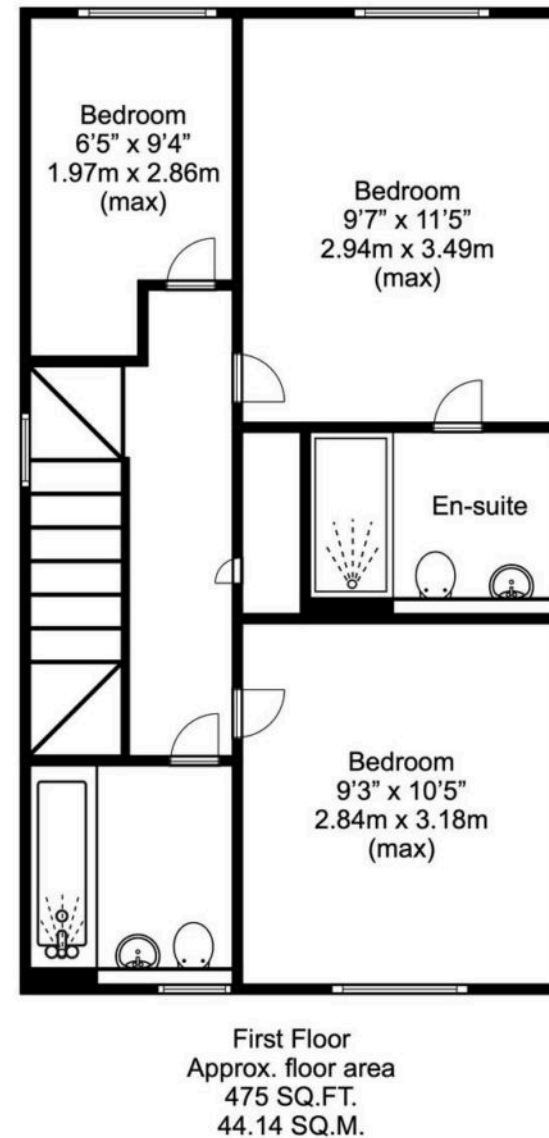
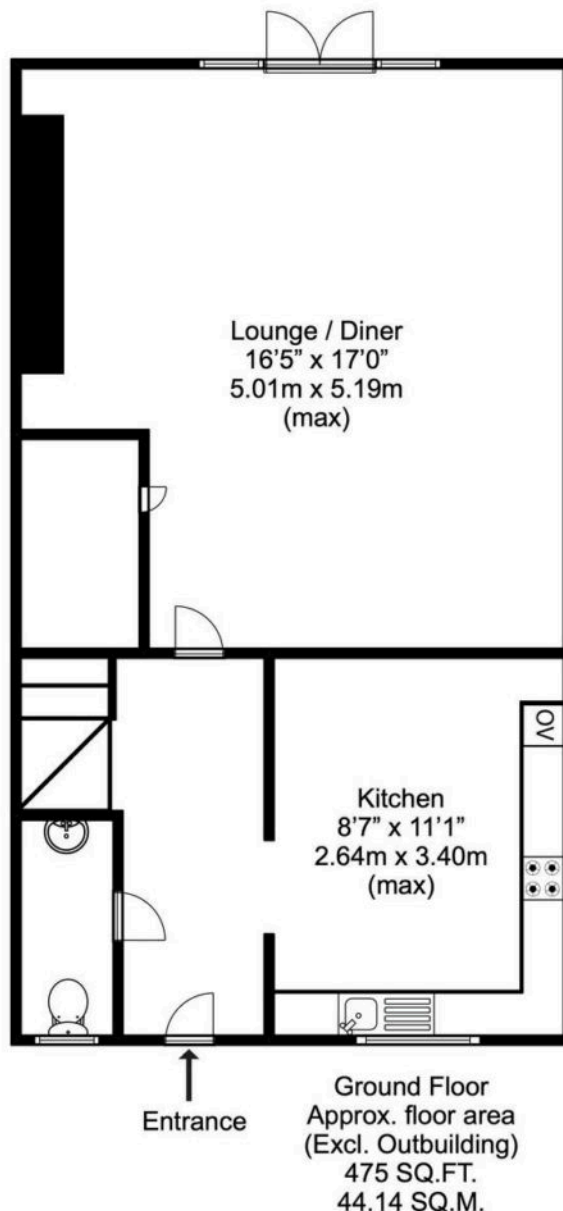
South facing garden

## CAR PORT

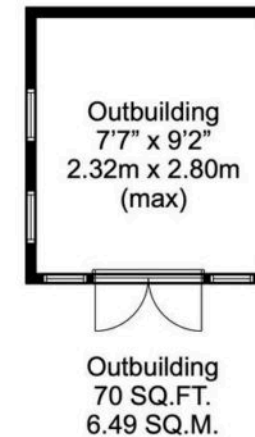
2 Parking Spaces







Approx. total  
floor area  
(Excl. Outbuilding)  
949 SQ.FT.  
88.28 SQ.M.



#### Disclaimer

This plan is for illustrative purposes only and no responsibility is taken for any error, omission or misstatement. The appliances shown have not been tested and no guarantee as to their operability or efficiency can be given. Measurements have been added as a guide to prospective buyers only, are not precise, not to scale, may have been taken from the widest area and may include wardrobe / cupboard space. Garages and outbuildings may not be represented in their actual location in relation to the property. Compass point, measurements and total areas should be considered inaccurate and checked as no guarantee is given to their accuracy. Buyers are strongly advised to take their own measurements and compass bearing.





## Eden Estates

781-783 London Road, Larkfield - ME20 6DE

01732 795162

[hey@eden-estates.co.uk](mailto:hey@eden-estates.co.uk)

[www.eden-estates.co.uk](http://www.eden-estates.co.uk)



eden  
estates