



Guide Price
£250,000

Freehold

2x  1x  1x 

**Russet Court, Coxheath,
Maidstone, Kent, ME17**

OVER 60?

Secure this property
for up to **59% less!**

Wards
Helping you move forwards



Main features

- Well presented terraced retirement bungalow, with a bright and airy interior
- Over 55's development with a 24 hour medical alarm
- Use of charming communal gardens, with ample off road parking on site
- Popular village location, short walk to local shops and amenities
- NO FORWARD CHAIN

Accommodation

GROUND FLOOR

Entrance Hall

Lounge/Diner: 13'1 x 13'1 (3.99m x 3.99m)

Kitchen: 10'0 x 9'0 (3.05m x 2.75m)

Bedroom 1: 10'1 x 9'1 (3.08m x 2.77m)

Bedroom 2: 14'1 x 9'0 (4.30m x 2.75m)

Bathroom: 9'0 x 6'1 (2.75m x 1.86m)

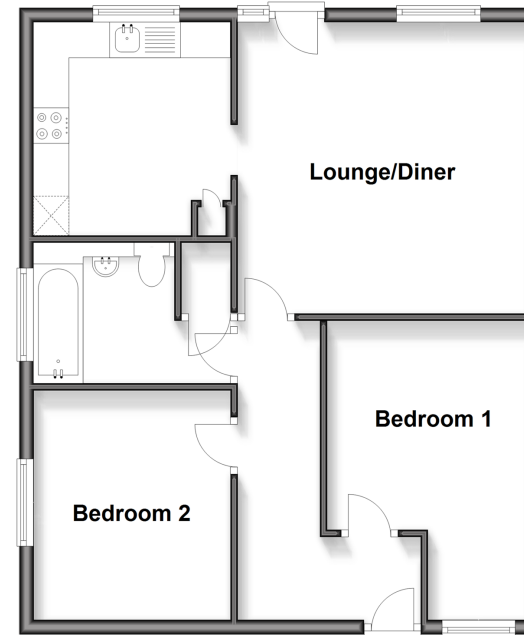
OUTSIDE

Communal Gardens

Off Road Parking

Ground Floor

Approx. 58.8 sq. metres (632.8 sq. feet)



Call Loose - 01622 744067 ■ wardsof Kent.co.uk

- Legal advice should be taken to verify fixtures/fittings, planning, alterations and/or lease details
- Through a Homewise Home For Life Plan people aged 60+ can secure this property for up to 50% less, by purchasing a Lifetime Lease.

- Appliances & services are untested, dimensions are approximate and floor plans are not to scale



13022249/20250924/SJ/AS