



HILLBURY ROAD, SW17

£2,850,000

- Chain free
- Double fronted home
- Over 4,000 sq ft
- Views of the Common
- Heaver estate
- Energy rating: D





ABOUT THE HOME

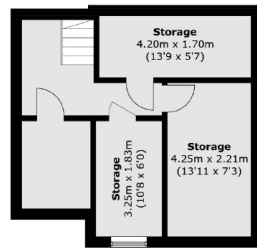
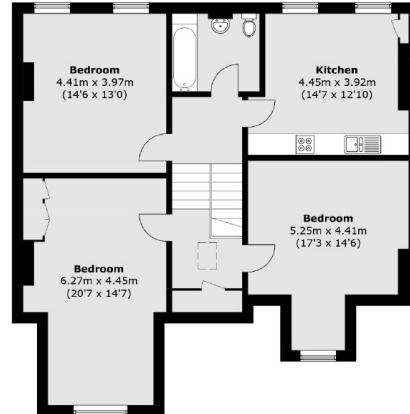
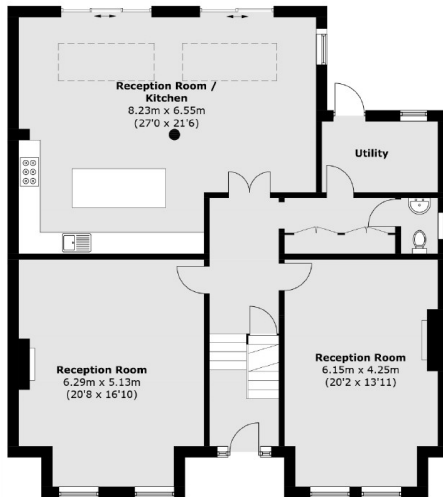
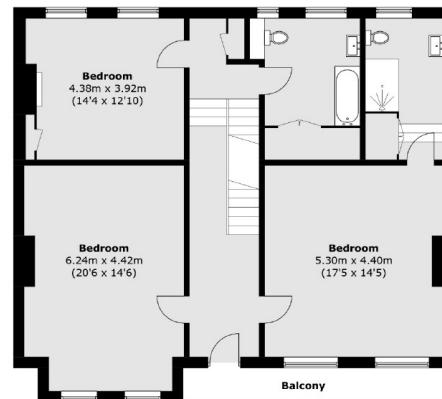
Offering beautiful views over Tooting Bec common and located in the popular Heaver Estate in Balham is this impressive six bedroom, double fronted Victorian family home.

The ground floor offers two bright and spacious reception rooms with large bay windows and original period features. At the rear of the building there is an extended open plan kitchen / reception room with bi-folding doors leading out to an impressive garden. The property benefits from an additional utility space and downstairs WC and stairs leading down to a basement which hosts four separate storage rooms. Across the first and second floors there are six generous bedrooms and three good sized bathrooms.

The ground floor offers two bright and spacious reception rooms with large bay windows and original period features. At the rear of the building there is an extended open plan kitchen / reception room with bi-folding doors leading out to an impressive garden. The property benefits from an additional utility space and downstairs WC and stairs leading down to a basement which hosts four separate storage rooms. Across the first and second floors there are six generous bedrooms and three good sized bathrooms.






Basement

Second Floor

Ground Floor

First Floor

Total area (approx.): 380.7 sq. m (4,097.7 sq. ft)
 Balcony: 6.6 sq. m (71.0 sq. ft)

JACKSONS BALHAM

8-11 Balham Station Road,
 London, SW12 9SG
 Sales: 020 8675 6555
 Lettings: 020 8675 6565

Energy Rating: D We aim to make our particulars both accurate and reliable. However they are not guaranteed; nor do they form part of an offer or contract. If you require clarification on any points then please contact us, especially if you're traveling some distance to view. Please note that appliances and heating systems have not been tested and therefore no warranties can be given as to their good working order.