



**95 Underwood
Road,
Plymouth,
PL7 1TA**

**Guide Price
£199,950**




MILLINGTON TUNNICLIFF

**95 Underwood
Road, Plymouth,
PL7 1TA**



2



1



2



B



EPC

54



FULL DESCRIPTION

GROUND FLOOR

ENTRANCE PORCH

Entrance door, door to:

HALLWAY

Stairs rising to first floor with under stair storage.

LIVING ROOM

11' 10" x 11' 6" (3.62m x 3.53m)

Upvc double glazed window to front, feature fireplace with cupboard to side.

DINING ROOM

11' 4" x 9' 6" (3.46m x 2.92m)

Cupboard to side of fire breast, French doors to exterior.

KITCHEN

13' 10" x 6' 7" (4.24m x 2.02m)

Upvc double glazed window to rear and door to exterior. Range of base units and work surfaces, single drainer one and a half bowl sink unit with mixer tap.

FIRST FLOOR

LANDING

Access to loft.

BEDROOM 1

15' 4" x 11' 8" (4.69m x 3.56m)

Upvc double glazed window to front, built in cupboard to side of fire breast.

BEDROOM 2

11' 10" x 9' 5" (3.62m x 2.88m)

Upvc double glazed window to rear, built in cupboard to side of fire breast.

BATHROOM/WC

7' 6" x 6' 9" (2.30m x 2.08m)

With 4 piece suite comprising bath, wash basin, low level WC and wash basin. Upvc double glazed window to rear.

EXTERIOR

There is a good sized enclosed garden at rear with westerly aspect.

TENURE

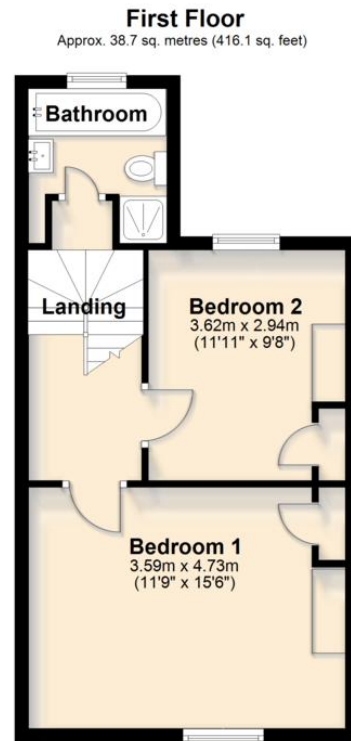
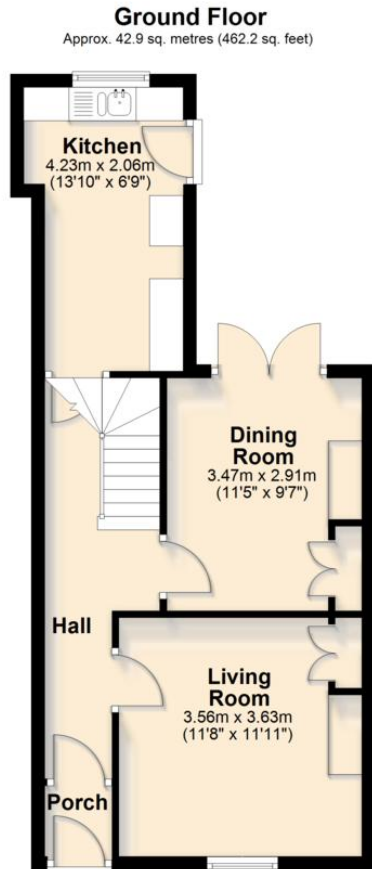
Freehold.

COUNCIL TAX

Band B.



FLOORPLAN



Total area: approx. 81.6 sq. metres (878.2 sq. feet)

DIRECTIONS

CONTACT

**19 Fore Street, Ivybridge, Devon,
PL21 9AB**

E info@millingtontunnicliff.co.uk

T 01752 896020

www.millingtontunnicliff.co.uk



MILLINGTON TUNNICLIFF

rightmove 



ZOOPLA 