



Gilpin Crescent, Pelsall WS3 4HX - Extended 3 Bedroom
£350,000

3 1 2



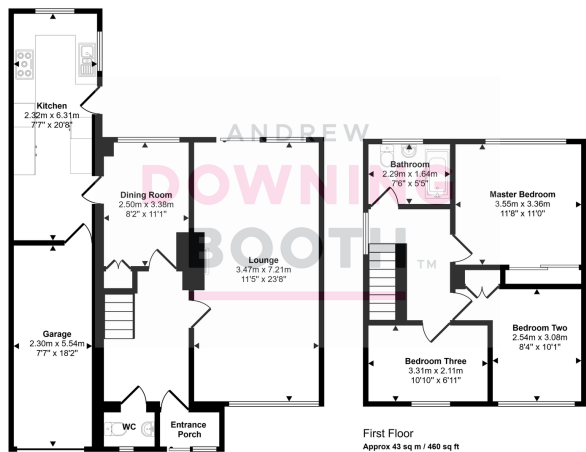
An immaculately presented three bedroom home, occupying an impressive plot. This superb link-detached property in Gilpin Crescent offers exceptional value for money, boasting extensive living space, consistently generous room sizes and a truly convenient and practical location.

The accommodation is light and airy throughout and is set across two floors, with the ground floor home to a superb living room, a particularly naturally bright and light breakfast kitchen/diner, and separate dining room, whilst the three bedrooms and the contemporary main bathroom sit to the first. To the front is a multi-vehicle driveway and a garage, whilst a charming private garden sits to the rear.

Conveniently located close to local amenities, reputable schools and good transport links. Early viewing is recommended.



Approx Gross Internal Area
120 sq m / 1293 sq ft



Ground Floor
Approx 77 sq m / 833 sq ft

First Floor
Approx 43 sq m / 460 sq ft

This floorplan is only for illustrative purposes and is not to scale. Measurements of rooms, doors, windows, and any items are approximate and no responsibility is taken for any error, omission or mis-statement. Icons of items such as bathroom suites are representations only and may not look like the real items. Made with Make Guppy 360.

- Three Bedroom Link - Detached Home
- Parking For Three Cars
- Garage
- Bathroom
- EPC Rating: C
- Extended Recently Fitted Breakfast Kitchen
- Dining Room
- Spacious Living Room
- Good Size Garden
- Council Tax Band: C

